



**OFFICE OF THE COMMISSIONER
GENERAL FOR REFUGEES AND
STATELESS PERSONS**

ASYLUM STATISTICS
April 2011

Publisher: Office of the Commissioner General for Refugees and Stateless Persons
Communication – Information – Press
cgra.info@ibz.fgov.be

Contact: Tine Van Valckenborgh – tine.vanvalckenborgh@ibz.fgov.be – (+32) 2 205 50 56

Date: 14/05/2011

.be

Table

I. Asylum figures in 2011	2
1. Annually	
2. In April	
II. Asylum applications in Belgium	3
1. Number of asylum applications (first applications + multiple applications)	3
a. Applications per month (2006-2011)	
b. Applications per year (from 1990 until the end of April 2011)	
c. Top 10 of countries of origin in April 2011	
d. Top 10 of countries of origin in 2011	
e. Asylum applications – male/female ration in 2007-2011	
f. Asylum applications in 2008, 2009, 2010 and 2011 according to nationality	
2. First asylum applications	6
a. First applications per month (2006-2011)	
b. First applications per year (2006-2011)	
3. Multiple asylum applications	7
a. Multiple applications per month (2006-2011)	
b. Multiple applications per year (2006-2011)	
c. Top 10 of countries of origin for multiple applications in April 2011	
d. Top 10 of countries of origin for multiple applications in 2011	
4. Unaccompanied foreign minors	9
a. Applications from unaccompanied minors per month (2006-2011)	
b. Applications from unaccompanied minors per year (2006-2011)	
c. Top 5 of countries of origin of unaccompanied minors in April 2011	
d. Top 5 of countries of origin of unaccompanied minors in 2011	
e. Male/female ratio of unaccompanied foreign minor applicants in 2007-2011	
III. Asylum decisions in 2011	11
1. Decisions by the Immigration Department	
2. Decisions by the CGRS	
a. Number of decisions	
b. Recognition of refugee status, per nationality	
c. Granting subsidiary protection status, per nationality	
IV. Evolution of the caseload at the CGRS	14



I. Asylum figures in 2011

(source: Immigration department)

1. Annually

Asylum applications	Number of files	% of asylum applications
Number of asylum applications	7.757	
First asylum applications	6.376	82,20%
Multiple asylum applications	1.381	17,80%
Unaccompanied foreign minors	654	8,43%
Decisions	Number of decisions	% of decisions
CGRS decisions	4.729	
Recognition of refugee status	823	17,40%
Subsidiary Protection (SP)	274	5,79%
Refusal to grant refugee status and SP	3.197	67,60%
Other	435	9,20%
Backlog at the CGRA	12.967	

2. April 2011

Asylum applications	Number of files	% of asylum applications
Number of asylum applications	1.933	
First asylum applications	1.590	82,26%
Multiple asylum applications	343	17,74%
Unaccompanied foreign minors	171	8,85%
Decisions	Number of decisions	% of decisions
CGRS decisions	1.293	
Recognition of refugee status	202	15,62%
Subsidiary Protection (SP)	84	6,50%
Refusal to grant refugee status and SP	902	69,76%
Other	105	8,12%
Backlog at the CGRA	12.967	



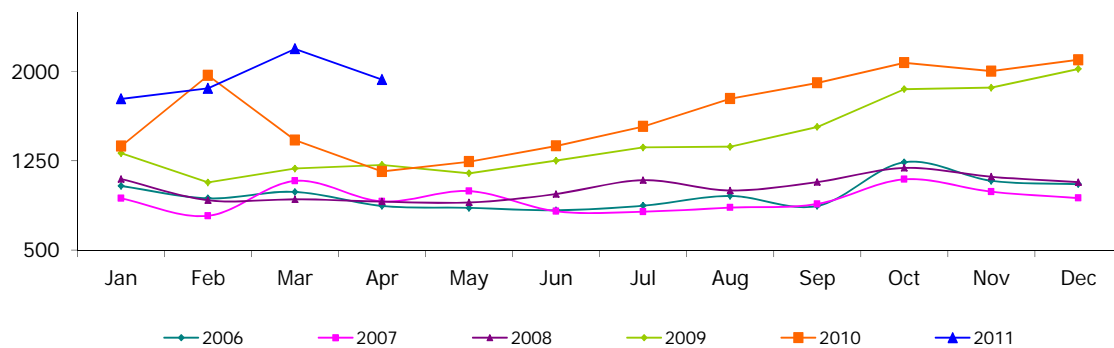
II. Asylum applications in Belgium

(source: Immigration Department unless otherwise stated)

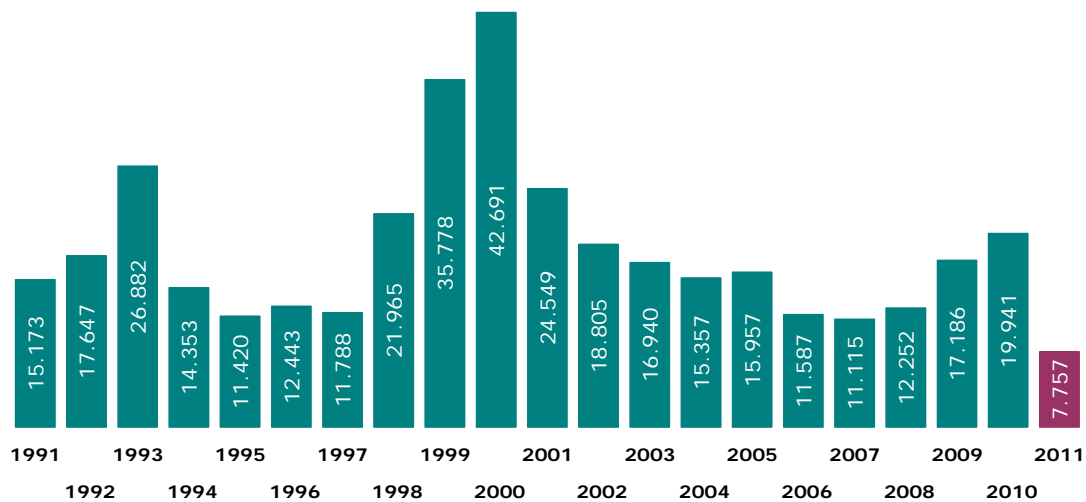
1. Number of asylum applications (first applications + multiple applications)

a. Applications per month (2006-2011)

	2006	2007	2008	2009	2010	2011	+/- in % 2011 vs 2010	+/- in % last month
January	1.038	934	1.097	1.314	1.373	1.771	28,99%	-15,67%
February	934	787	918	1.068	1.968	1.860	-5,49%	5,03%
March	988	1.081	926	1.185	1.424	2.193	54,00%	17,90%
April	870	908	907	1.215	1.160	1.933	66,64%	-11,86%
May	854	995	899	1.145	1.243			
June	834	825	971	1.251	1.375			
July	872	822	1.087	1.363	1.539			
August	954	856	1.000	1.368	1.773			
September	870	887	1.071	1.535	1.906			
October	1.238	1.094	1.190	1.853	2.076			
November	1.082	990	1.116	1.866	2.004			
December	1.053	936	1.070	2.023	2.100			
Total	11.587	11.115	12.252	17.186	19.941	7.757		



b. Applications per year (from 1990 until the end of April 2011)



Top 10 of countries of origin in April 2011

	Country of origin	Number	%
1	Afghanistan	244	12,6%
2	Guinea	171	8,8%
3	Iraq	153	7,9%
4	Kosovo	152	7,9%
5	Serbia	106	5,5%
6	Macedonia	100	5,2%
7	Russia	89	4,6%
8	Congo RD	62	3,2%
9	Ivory Coast	58	3,0%
10	Pakistan	50	2,6%
	Other countries	748	38,7%
Total April 2011		1.933	100%
Percentage top 10		61,3%	

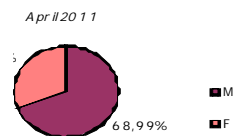
c. Top 10 of countries of origin in 2011

	Country of origin	Number	%
1	Afghanistan	856	11,0%
2	Guinea	684	8,8%
3	Kosovo	617	8,0%
4	Iraq	584	7,5%
5	Serbia	544	7,0%
6	Russia	425	5,5%
7	Macedonia	361	4,7%
8	Congo RD	284	3,7%
9	Armenia	213	2,7%
10	Ivory Coast	200	2,6%
	Other countries	2.989	38,5%
Total 2011		7.757	100%
Percentage top 10		61,5%	

d. Asylum applications : male/female ratio of applicants from 2007 until 2011

(source: CGRS)

	Male	Female
2007	67,14%	32,86%
2008	69,27%	30,73%
2009	69,17%	30,83%
2010	68,22%	31,78%
2011	69,33%	30,67%



e. Applications in 2008, 2009, 2010 and 2011 according to nationality
 (in blue and bold : top 10 in 2011)

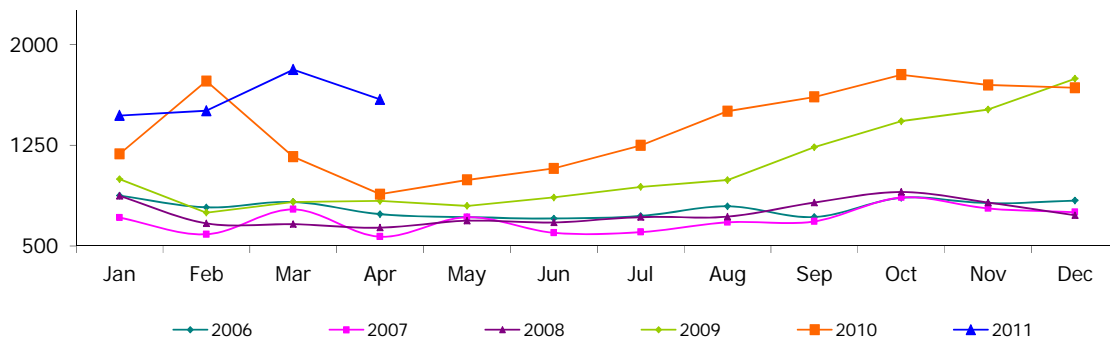
Country of origin	2008	2009	2010	2011	Country of origin	2008	2009	2010	2011
Afghanistan	879	1.659	1.411	856	Libya	15	19	19	27
Albania	172	256	204	100	Lithuania	1	5	1	0
Algeria	206	275	287	94	Macedonia	122	201	1.082	361
Angola	133	142	153	54	Madagascar	1	3	2	2
Argentina	0	0	8	0	Malaysia	0	2	0	0
Armenia	461	1.099	986	213	Mali	5	11	25	6
Azerbaijan	53	54	72	26	Malta	0	0	2	0
Bangladesh	79	75	177	100	Mauretania	128	187	206	58
Belorussia	58	40	53	15	Mauritius	0	1	3	5
Benin	16	50	56	17	Mexico	0	1	1	1
Bhutan	34	24	19	3	Moldova	14	29	14	1
Bosnia-Herzegovina	71	90	106	40	Mongolia	43	85	61	22
Brasil	1	2	3	0	Montenegro	7	12	14	9
Bulgaria	46	101	79	23	Morocco	36	53	46	23
Burkina-Faso	32	52	69	20	Mozambique	0	0	0	1
Burundi	106	120	132	55	Myanmar	9	8	14	1
Cameroon	367	302	357	155	Nepal	39	65	203	77
Canada	1	0	0	0	Netherlands	0	2	1	0
Cape Verde	1	0	0	0	Niger	57	71	78	19
Central African Rep.	7	6	4	1	Nigeria	59	101	138	58
Chad	16	16	21	2	North Korea	2	4	16	16
China	189	329	235	124	Pakistan	150	233	340	175
Colombia	4	8	13	1	Palestina	5	9	37	18
Congo RD	579	670	786	284	Panama	0	2	0	0
Congo RP	30	14	22	8	Peru	0	1	0	0
Croatia	3	16	15	2	Philippines	0	1	0	1
Cuba	2	3	2	1	Poland	2	6	0	0
Czech Rep.	45	48	21	9	Romania	43	98	56	30
Djibouti	26	39	31	15	Russia	1.620	1.605	1.526	425
Dominican Rep.	1	9	1	2	Rwanda	273	308	337	131
Ecuador	2	0	0	0	Salvador	0	0	0	10
Egypt	24	29	29	38	Saudi Arabia	0	0	1	1
Equatorial Guinea	0	3	3	0	Senegal	50	113	252	103
Eritrea	35	69	110	21	Serbia	572	514	1.233	544
Estonia	0	0	1	0	Sierra Leone	42	45	65	28
Ethiopia	71	89	72	11	Slovakia	239	261	53	7
France	0	0	0	1	Slovenia	0	1	0	0
Gabon	4	5	10	1	Somalia	163	216	294	130
Gambia	35	41	57	15	South Africa	1	1	0	0
Georgia	222	327	323	95	Spain	0	3	1	1
Germany	0	2	0	0	Sri Lanka	148	216	140	63
Ghana	20	29	65	32	Sudan	62	89	92	24
Greece	0	0	1	0	Surinam	0	4	5	3
Guatemala	0	7	1	0	Syria	281	347	388	134
Guinea	661	1.052	1.398	684	Tadzhikistan	1	5	7	2
Guinea-Bissau	1	3	5	3	Tanzania	49	90	89	56
Guyana	0	1	0	0	Thailand	0	1	1	0
Haiti	1	1	9	4	Timor-Leste	2	0	0	0
Hungary	16	143	36	2	Togo	171	130	246	67
India	84	123	151	56	Tunisia	6	21	20	28
Indonesia	1	3	0	0	Turkey	284	259	277	114
Iran	614	732	386	131	Turkmenistan	0	5	3	1
Iraq	1.070	1.386	1.769	584	Uganda	13	23	15	7
Israel	18	8	7	6	Ukraine	61	33	62	14
Italy	0	0	1	0	United Arab Emirates	0	2	0	0
Ivory Coast	91	88	173	200	USA	0	0	3	2
Jamaica	4	1	1	0	Uzbekistan	15	14	20	5
Jordania	21	15	10	10	Venezuela	1	0	2	0
Kampuchea	0	1	0	0	Vietnam	9	10	18	2
Kazakhstan	16	44	75	14	Yemen	7	8	11	10
Kenia	55	42	65	20	Zimbabwe	8	4	3	2
Kirghizistan	14	19	117	41	Others	14	15	10	9
Kosovo	478	1.539	1.848	617	Indefinite	126	199	254	85
Kuwait	1	0	1	0	Stateless Persons	6	7	7	0
Latvia	5	3	2	0	Refugees	0	1	1	0
Libanon	85	95	70	23	Total	12.252	17.186	19.941	7.757
Liberia	23	27	27	9					



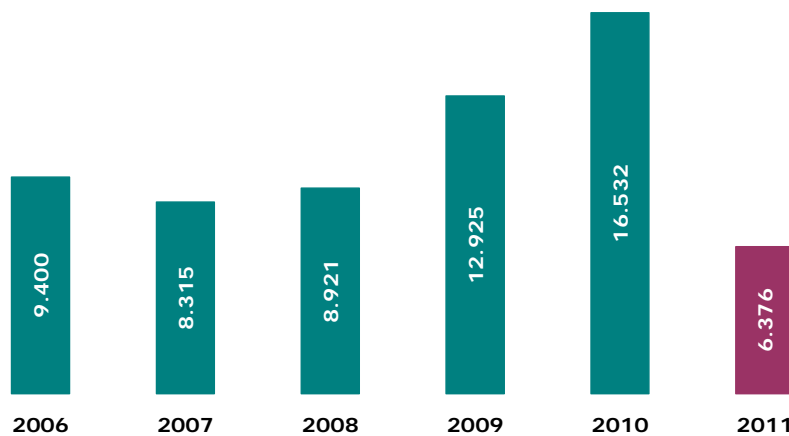
2. First asylum applications

a. First applications per month (2006-2011)

	2006	2007	2008	2009	2010	2011	+/- in % 2011 vs 2010	+/- en % last month
January	875	712	873	998	1.184	1.470	24,16%	-12,29%
February	788	588	669	749	1.726	1.505	-12,80%	2,38%
March	828	773	663	828	1.164	1.811	55,58%	20,33%
April	737	570	637	836	886	1.590	79,46%	-12,20%
May	715	715	689	799	992			
June	705	599	676	862	1.077			
July	724	604	716	940	1.248			
August	796	677	719	991	1.502			
September	716	684	824	1.235	1.608			
October	859	861	902	1.428	1.773			
November	819	780	824	1.515	1.696			
December	838	752	729	1.744	1.676			
Total	9.400	8.315	8.921	12.925	16.532	6.376		



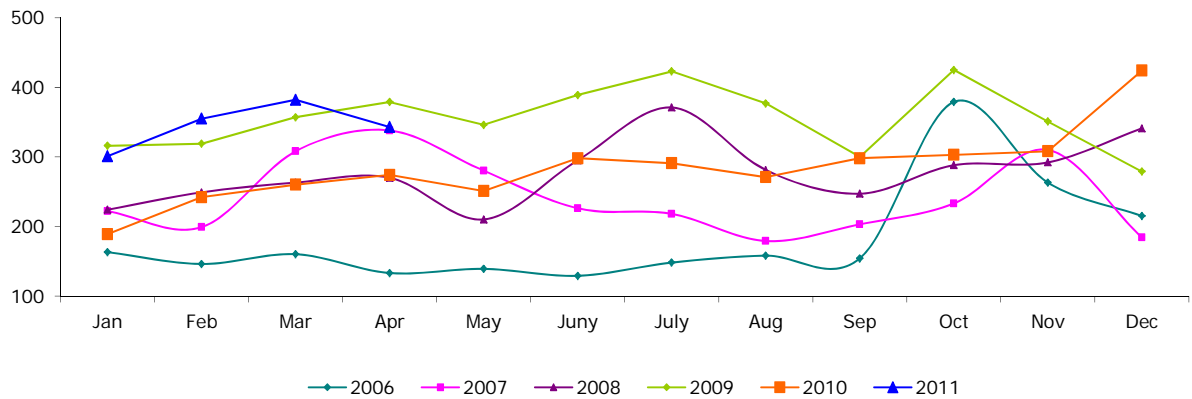
b. First applications per year (from 2006 until the end of April 2011)



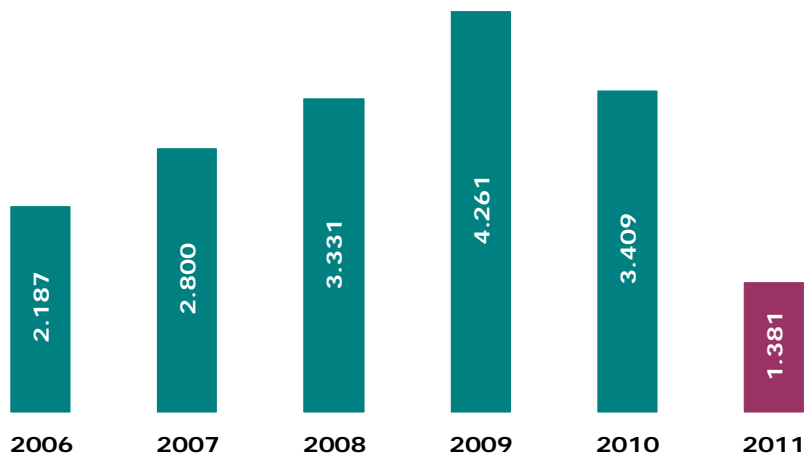
3. Multiple asylum applications

a. Multiple applications per month (2006-2011)

	2006	2007	2008	2009	2010	2011	+/- in % 2011 vs 2010	+/- in % last month
January	163	222	224	316	189	301	59,26%	-29,01%
February	146	199	249	319	242	355	46,69%	17,94%
March	160	308	263	357	260	382	46,92%	7,61%
April	133	338	270	379	274	343	25,18%	-10,21%
May	139	280	210	346	251			
June	129	226	295	389	298			
July	148	218	371	423	291			
August	158	179	281	377	271			
September	154	203	247	300	298			
October	379	233	288	425	303			
November	263	210	292	351	308			
December	215	184	341	279	424			
Total	2.187	2.800	3.331	4.261	3.409	1.381		



b. Multiple applications per year (from 2006 until the end of April 2011)



c. Top 10 of countries of origin for multiple applications in April 2011

	Country of origin	Number	%
1	Guinea	31	9,0%
2	Kosovo	29	8,5%
3	Russia	27	7,9%
4	Iraq	22	6,4%
5	Afghanistan	16	4,7%
6	Armenia	14	4,1%
	Syria	14	4,1%
7	Cameroon	12	3,5%
	China	12	3,5%
	Serbia	12	3,5%
8	Rwanda	10	2,9%
	Tanzania	10	2,9%
9	Algeria	8	2,3%
	Congo RD	8	2,3%
	Mauritania	8	2,3%
10	Ivory Coast	7	2,0%
	Other countries	103	30,0%
Total April 2011		343	100%
Percentage top 10		70,0%	

d. Top 10 of countries of origin for multiple applications in 2011

	Country of origin	Number	%
1	Russia	122	8,8%
2	Afghanistan	120	8,7%
3	Guinea	108	7,8%
4	Kosovo	98	7,1%
5	Iraq	72	5,2%
6	Serbia	71	5,1%
7	China	52	3,8%
8	Armenia	48	3,5%
9	Cameroon	46	3,3%
10	Macedonia	38	2,8%
	Other countries	606	43,9%
Total 2011		1.381	100%
Percentage top 10		56,1%	

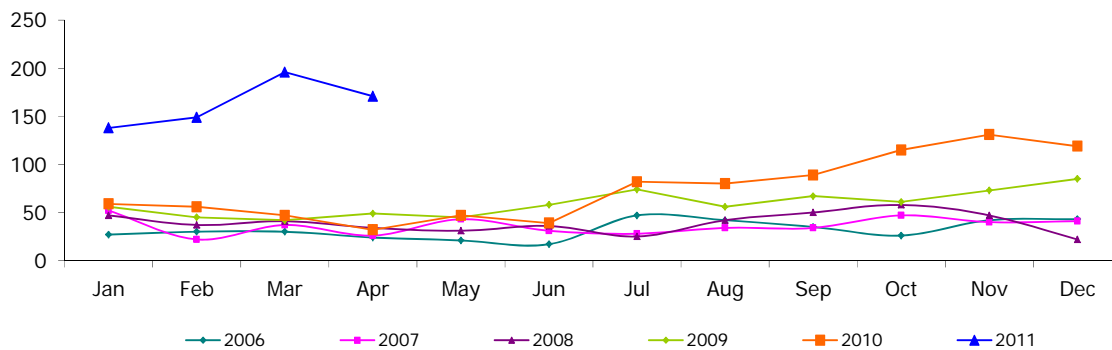


4. Unaccompanied foreign minors

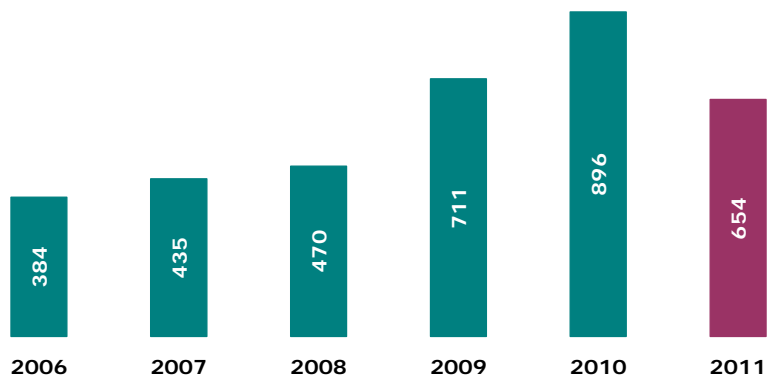
a. Applications from unaccompanied foreign minors per month (2006-2011)

	2006	2007	2008	2009	2010	2011*	+/- in % 2011 vs 2010	+/- in % last month
January	27	52	47	56	59	138	133,90%	15,97%
February	30	22	37	45	56	149	166,07%	7,97%
March	30	37	41	42	47	196	317,02%	31,54%
April	24	26	34	49	32	171	434,38%	-12,76%
May	21	43	31	45	47			
June	17	31	36	58	39			
July	47	28	25	74	82			
August	42	34	42	56	80			
September	35	34	50	67	89			
October	26	47	58	61	115			
November	42	40	47	73	131			
December	43	41	22	85	119			
Total	384	435	470	711	896	654		

* Please note: the latest figures are liable to change according to the results of the bone age tests carried out to ascertain whether an alleged minor is younger than 18.



b. Applications from unaccompanied foreign minors per year (from 2006 until the end of April 2011)



c. Top 5 of countries of origin of unaccompanied minors in April 2011

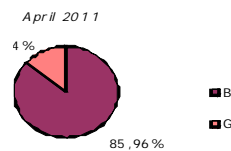
	Country of origin	Number	%
1	Afghanistan	95	55,6%
2	Guinea	25	14,6%
3	Pakistan	7	4,1%
4	Ghana	4	2,3%
	Morocco	4	2,3%
5	Ivory Coast	3	1,8%
	Iraq	3	1,8%
	Iran	3	1,8%
	Mongolia	3	1,8%
	Rwanda	3	1,8%
	Somalia	3	1,8%
	Other countries	18	10,5%
Total April 2011		171	100%
Percentage top 5		89,5%	

d. Top 5 of countries of origin of unaccompanied minors in 2011

	Country of origin	Number	%
1	Afghanistan	317	48,5%
2	Guinea	107	16,4%
3	Congo RD	23	3,5%
4	Iraq	21	3,2%
5	Rwanda	15	2,3%
	Other countries	171	26,1%
Total 2011		654	100%
Percentage top 5		73,9%	

e. Male/female ratio of unaccompanied minor applicants

	Boys	Girls
2007	68,40%	31,60%
2008	71,40%	28,60%
2009	77,98%	22,02%
2010	72,88%	27,12%
2011	82,11%	17,89%



III. Asylum decisions in 2011

(source: CGRS)

1. Decisions by the Immigration Department

	January-March	April	Total
Transfer of files to CGRS	5.251	1.752	7.003
25/26 quater (Dublin)	475	127	602
13 quater	373	171	544
Renunciation, ...	348	14	362
Total	6.447	2.064	8.511

The Immigration Department decides on certain kinds of applications: applications falling under the Dublin Regulation, multiple applications, renunciations etc. Applications not who de not fall within to these categories are transferred to the CGRS.

2. Decisions by the CGRS

a. Number of decisions

	January	February	March	April	Total
Recognition of refugee status	167	234	220	202	823
Granting of subsidiary protection	53	62	75	84	274
Refusal to grant refugee status and subsidiary protection	598	745	911	890	3.144
Refusal to take an asylum application into consideration (EU nationals)	3	10	16	9	38
Technical refusal	44	77	91	75	287
Exclusion from refugee status and from subsidiary protection	1	2	1		4
Exclusion from refugee status and refusal to grant subsidiary protection		1	1	3	5
Refusal to grant refugee status and exclusion form subsidiary protection		2	4		6
Withdrawal of refugee status	6	2	2	2	12
Renunciation + closing of the case + departure IOM	19	40	23	24	106
Application which does not proceed to judgment: regularization under article 55	4	5	9	3	21
Application which does not proceed to judgment: (naturalization, death, administrative reasons)	3	2	3	1	9
Total	898	1.182	1.356	1.293	4.729



b. Recognition of refugee status, per nationality

(in blue and bold : countries in the top 10 of asylum applications in 2011)

Country of origin	January	February	March	April	Total
Afghanistan	20	17	18	12	67
Albania		3		4	7
Algeria		1			1
Angola	1			1	2
Armenia	1				1
Azerbaijan		2			2
Bangladesh	1				1
Belorussia	1			1	2
Burundi	1	2	3	3	9
Cameroon	1	14	10	5	30
Chad		1		1	2
China	14	7	19	18	58
Colombia	1		3		4
Congo (RD)	7	10	2	1	20
Djibouti		2		1	3
Eritrea	1	1		1	3
Gabon		1	1		2
Gambia	1		1		2
Guinea	27	47	32	31	137
Indefinite	6	5	5	3	19
India			1		1
Iran	1	3	3	4	11
Iraq	27	36	49	35	147
Ivory Coast	1			1	2
Jordania			1		1
Kenia		2	2		4
Kosovo	11	13	10	18	52
Kuwait	1				1
Libanon	1			2	3
Macedonia		1			1
Mauretania		1	2	1	4
Morocco	1	1			2
Myanmar			1	2	3
Niger	2	3	1	6	12
Nigeria		1			1
North Corea	2	4	3	1	10
Ouganda				1	1
Palestine				1	1
Russia	9	5	9	12	35
Rwanda	2	14	11	4	31
Senegal	5	6	7	7	25
Serbia	4	9		4	17
Sierra Leone		4			4
Somalia	3	1	6	4	14
Sri Lanka	2	4		4	10
Sudan			1		1
Syria	8	4	12	8	32
Tanzania	2	2	1		5
Togo		2	4		6
Turkey	2	4	2	5	13
Turkmenistan		1			1
Total	167	234	220	202	621



c. **Granting of subsidiary protection, per nationality**
 (in blue and bold : countries in the top 10 of asylum applications in 2011)

Country of origin	January	February	March	April	Total
Afghanistan	27	31	22	30	110
Burundi			1		1
Cameroon			1		1
Congo (RD)	1		2		3
Guinea	1				1
Indefinite		4	1		5
Irak	21	22	44	53	140
Palestine	1				1
Somalia	2	4	1	1	8
Sudan			1		1
Tanzania			2		2
Yemen		1			1
Total	53	62	75	84	274

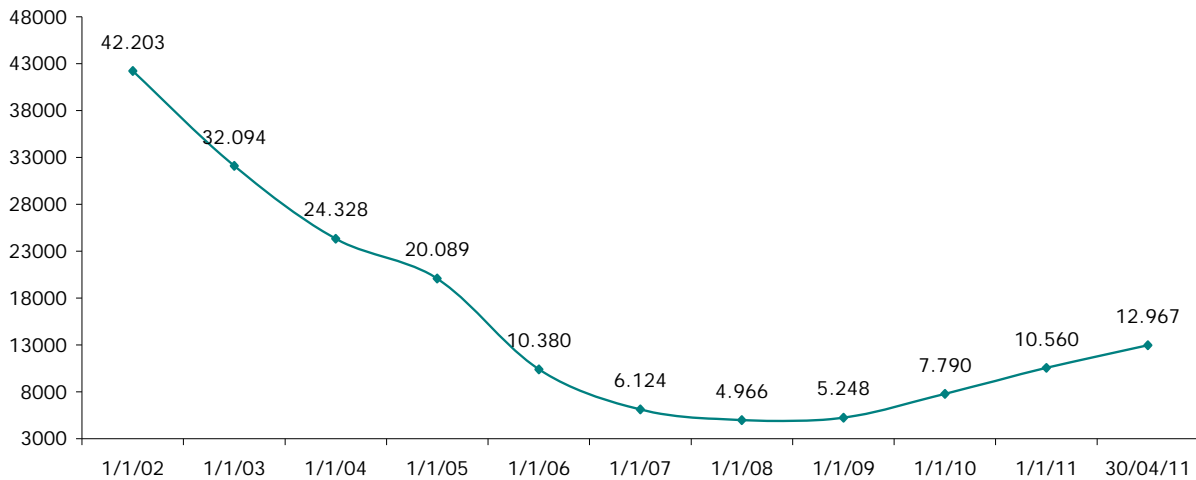


IV. Evolution of the caseload at the CGRS

(Caseload in assessing asylum applications at the CGRS)

At the end of April 2011, the CGRA had a total caseload of 12,967 dossiers, of which 4,500 dossiers may be considered a normal workload. The backlog as such amounted therefore to 8,467 dossiers.

Caseload per year



Caseload per month in 2010 and January - April 2011

