



**OFFICE OF THE COMMISSIONER  
GENERAL FOR REFUGEES AND  
STATELESS PERSONS**

**ASYLUM STATISTICS**  
**August 2011**

Publisher: Office of the Commissioner General for Refugees and Stateless Persons  
Communication – Information – Press  
[cgra.info@ibz.fgov.be](mailto:cgra.info@ibz.fgov.be)

Contact: Tine Van Valckenborgh – [tine.vanvalckenborgh@ibz.fgov.be](mailto:tine.vanvalckenborgh@ibz.fgov.be) – (+32) 2 205 50 56

Date: 06/09/2011

.be

## Table

<b>I. Asylum figures in 2011 .....</b>	<b>2</b>
1. Annually	
2. In August	
<b>II. Asylum applications in Belgium .....</b>	<b>3</b>
1. Number of asylum applications (first applications + multiple applications) .....	3
a. Applications per month (2006-2011)	
b. Applications per year (from 1990-2011)	
c. Top 10 of countries of origin in August 2011	
d. Top 10 of countries of origin in 2011	
e. Asylum applications – male/female ration in 2007-2011	
f. Asylum applications in 2008, 2009, 2010 and 2011 according to nationality	
2. First asylum applications .....	6
a. First applications per month (2006-2011)	
b. First applications per year (2006-2011)	
3. Multiple asylum applications .....	7
a. Multiple applications per month (2006-2011)	
b. Multiple applications per year (2006-2011)	
c. Top 10 of countries of origin for multiple applications in August 2011	
d. Top 10 of countries of origin for multiple applications in 2011	
4. Unaccompanied foreign minors .....	9
a. Applications from unaccompanied minors per month (2006-2011)	
b. Applications from unaccompanied minors per year (2006-2011)	
c. Top 5 of countries of origin of unaccompanied minors in August 2011	
d. Top 5 of countries of origin of unaccompanied minors in 2011	
e. Male/female ratio of unaccompanied foreign minor applicants in 2007-2011	
<b>III. Asylum decisions in 2011 .....</b>	<b>11</b>
1. Decisions by the Immigration Department	
2. Decisions by the CGRS	
a. Number of decisions	
b. Recognition of refugee status, per nationality	
c. Granting subsidiary protection status, per nationality	
<b>IV. Evolution of the caseload at the CGRS.....</b>	<b>14</b>

## I. Asylum figures in 2011

(source: Immigration department)

### 1. Annually

Asylum applications	Number of files	% of asylum applications
Number of asylum applications	15.642	
First asylum applications	12.505	79,95%
Multiple asylum applications	3.137	20,05%
Unaccompanied foreign minors	1234	7,89%
Decisions	Number of decisions	% of decisions
CGRS decisions	10.279	
Recognition of refugee status	1.719	16,72%
Subsidiary Protection (SP)	584	5,68%
Refusal to grant refugee status and SP	7.016	68,26%
Other	960	9,34%
<b>Backlog at the CGRA</b>	<b>13.035</b>	

### 2. August 2011

Asylum applications	Number of files	% of asylum applications
Number of asylum applications	2.149	
First asylum applications	1.748	81,34%
Multiple asylum applications	401	18,66%
Unaccompanied foreign minors	173	8,05%
Decisions	Number of decisions	% of decisions
CGRS decisions	1.394	
Recognition of refugee status	252	18,08%
Subsidiary Protection (SP)	110	7,89%
Refusal to grant refugee status and SP	908	65,14%
Other	124	8,90%
<b>Backlog at the CGRA</b>	<b>13.035</b>	

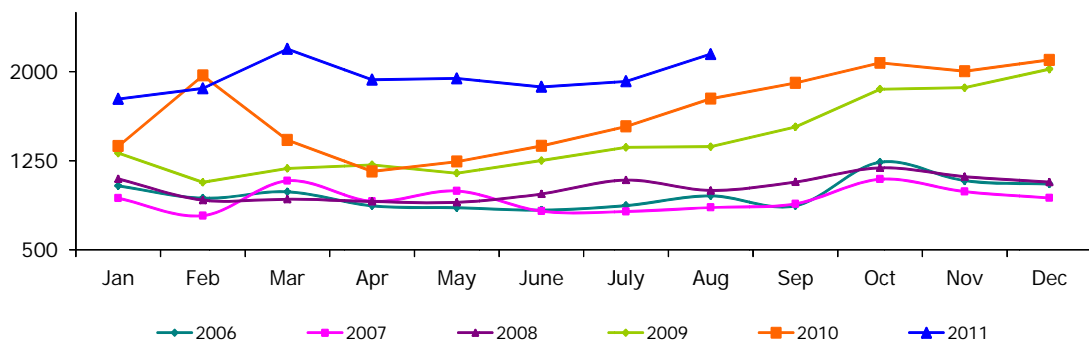
## II. Asylum applications in Belgium

(source: Immigration Department unless otherwise stated)

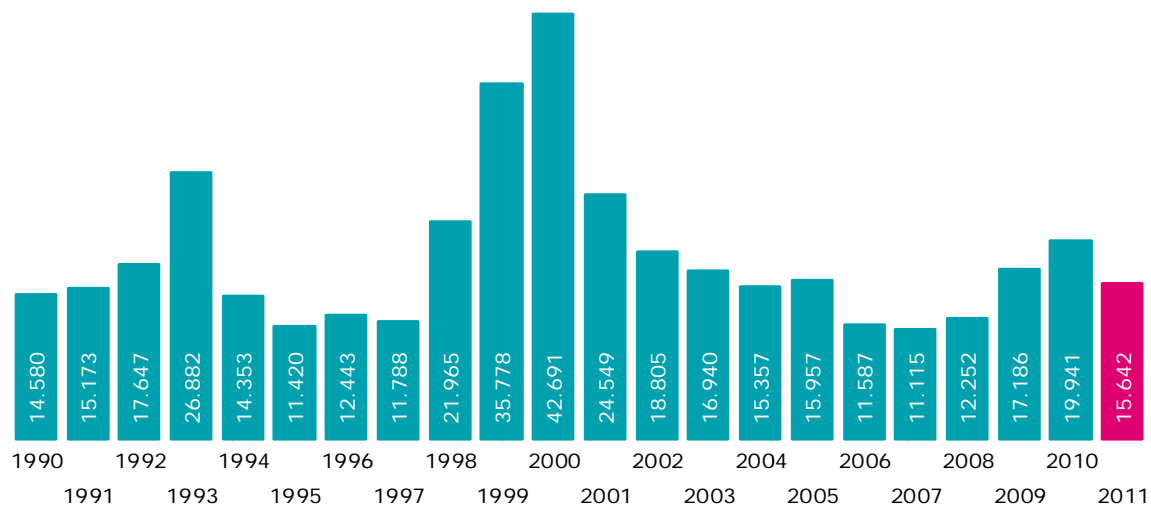
### 1. Number of asylum applications (first applications + multiple applications)

#### a. Applications per month (2006-2011)

	2006	2007	2008	2009	2010	2011	+/- in % 2011 vs 2010	+/- in % vs last month
January	1.038	934	1.097	1.314	1.373	1.771	28,99%	-15,67%
February	934	787	918	1.068	1.968	1.860	-5,49%	5,03%
March	988	1.081	926	1.185	1.424	2.193	54,00%	17,90%
April	870	908	907	1.215	1.160	1.933	66,64%	-11,86%
May	854	995	899	1.145	1.243	1.944	56,40%	0,57%
June	834	825	971	1.251	1.375	1.873	36,22%	-3,65%
July	872	822	1.087	1.363	1.539	1.919	24,69%	2,46%
August	954	856	1.000	1.368	1.773	2.149	21,21%	11,99%
September	870	887	1.071	1.535	1.906			
October	1.238	1.094	1.190	1.853	2.076			
November	1.082	990	1.116	1.866	2.004			
December	1.053	936	1.070	2.023	2.100			
<b>Total</b>	<b>11.587</b>	<b>11.115</b>	<b>12.252</b>	<b>17.186</b>	<b>19.941</b>	<b>15.642</b>		



#### b. Applications per year (from 1990 until the end of August 2011)



**c. Top 10 of countries of origin in August 2011**

Country of origin	Number	%
1 Afghanistan	198	9,2%
2 Iraq	195	9,1%
3 Guinea	159	7,4%
4 Russia	148	6,9%
5 Kosovo	116	5,4%
6 Congo RD	97	4,5%
7 Pakistan	94	4,4%
8 Macedonia	71	3,3%
9 Syria	64	3,0%
10 Serbia	55	2,6%
Other countries	952	44,3%
<b>Total August 2011</b>	<b>2.149</b>	<b>100%</b>
<b>Percentage top 10</b>	<b>55,7%</b>	

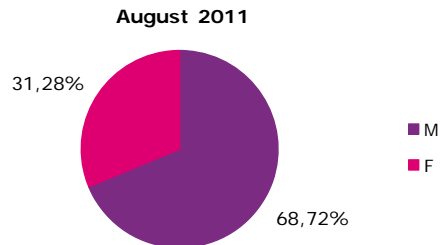
**d. Top 10 of countries of origin in 2011**

Country of origin	Number	%
1 Afghanistan	1.852	11,8%
2 Guinea	1.277	8,2%
3 Iraq	1.243	7,9%
4 Kosovo	1.029	6,6%
5 Russia	953	6,1%
6 Serbia	777	5,0%
7 Congo RD	597	3,8%
8 Macedonia	584	3,7%
9 Pakistan	531	3,4%
10 Armenia	448	2,9%
Other countries	6.351	40,6%
<b>Total 2011</b>	<b>15.642</b>	<b>100%</b>
<b>Percentage top 10</b>	<b>59,4%</b>	

**e. Asylum applications : male/female ratio of applicants from 2007 until 2011**

(source: CGRS)

	Male	Female
2007	67,14%	32,86%
2008	69,27%	30,73%
2009	69,17%	30,83%
2010	68,22%	31,78%
<b>2011</b>	<b>69,85%</b>	<b>30,15%</b>



**f. Applications in 2008, 2009, 2010 and 2011 according to nationality**  
 (in color and bold : top 10 in 2011)

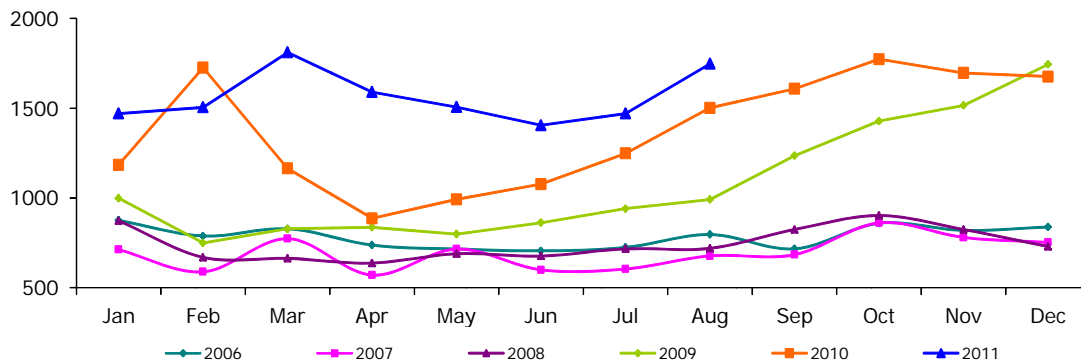
Country of origin	2008	2009	2010	2011
<b>Afghanistan</b>	<b>879</b>	<b>1.659</b>	<b>1.411</b>	<b>1.852</b>
Albania	172	256	204	236
Algeria	206	275	287	179
Angola	133	142	153	103
Argentina	0	0	8	1
<b>Armenia</b>	<b>461</b>	<b>1.099</b>	<b>986</b>	<b>448</b>
Azerbaijan	53	54	72	61
Bangladesh	79	75	177	229
Belorussia	58	40	53	51
Benin	16	50	56	33
Bhutan	34	24	19	6
Bosnia-Herzegovina	71	90	106	128
Brasil	1	2	3	0
Bulgaria	46	101	79	35
Burkina-Faso	32	52	69	68
Burundi	106	120	132	109
Cameroon	367	302	357	317
Canada	1	0	0	0
Cape Verde	1	0	0	0
Central African Rep.	7	6	4	2
Chad	16	16	21	4
China	189	329	235	241
Colombia	4	8	13	2
<b>Congo RD</b>	<b>579</b>	<b>670</b>	<b>786</b>	<b>597</b>
Congo RP	30	14	22	17
Croatia	3	16	15	5
Cuba	2	3	2	2
Czech Rep.	45	48	21	18
Djibouti	26	39	31	36
Dominican Rep.	1	9	1	4
Ecuador	2	0	0	0
Egypt	24	29	29	67
Equatorial Guinea	0	3	3	1
Eritrea	35	69	110	58
Estonia	0	0	1	0
Ethiopia	71	89	72	33
Fidji	0	0	0	1
France	0	0	0	5
Gabon	4	5	10	1
Gambia	35	41	57	33
Georgia	222	327	323	204
Ghana	20	29	65	67
Greece	0	0	1	0
Guatemala	0	7	1	1
<b>Guinea</b>	<b>661</b>	<b>1.052</b>	<b>1.398</b>	<b>1.277</b>
Guinea-Bissau	1	3	5	7
Guyana	0	1	0	0
Haiti	1	1	9	5
Hungary	16	143	36	7
India	84	123	151	115
Indonesia	1	3	0	0
Iran	614	732	386	273
<b>Iraq</b>	<b>1.070</b>	<b>1.386</b>	<b>1.769</b>	<b>1.243</b>
Israel	18	8	7	9
Italy	0	0	1	1
Ivory Coast	91	88	173	284
Jamaica	4	1	1	0
Jordania	21	15	10	19
Kampuchea	0	1	0	0
Kazakhstan	16	44	75	60
Kenia	55	42	65	33
Kirghizistan	14	19	117	65
<b>Kosovo</b>	<b>478</b>	<b>1.539</b>	<b>1.848</b>	<b>1.029</b>
Kuwait	1	0	1	0
Latvia	5	3	2	0
Libanon	85	95	70	49
Liberia	23	27	27	32
Libya	15	19	19	47

Country of origin	2008	2009	2010	2011
Lithuania	1	5	1	3
<b>Macedonia</b>	<b>122</b>	<b>201</b>	<b>1.082</b>	<b>584</b>
Madagascar	1	3	2	5
Malawi	0	0	0	1
Malaysia	0	2	0	0
Mali	5	11	25	18
Malta	0	0	2	0
Mauretania	128	187	206	114
Mauritius	0	1	3	6
Mexico	0	1	1	1
Moldova	14	29	14	6
Mongolia	43	85	61	38
Montenegro	7	12	14	22
Morocco	36	53	46	47
Mozambique	0	0	0	1
Myanmar	9	8	14	3
Nepal	39	65	203	189
Netherlands	0	2	1	0
Niger	57	71	78	49
Nigeria	59	101	138	111
North Corea	2	4	16	38
<b>Pakistan</b>	<b>150</b>	<b>233</b>	<b>340</b>	<b>531</b>
Palestina	5	9	37	36
Panama	0	2	0	0
Peru	0	1	0	0
Philippines	0	1	0	1
Poland	2	6	0	0
Romania	43	98	56	49
<b>Russia</b>	<b>1.620</b>	<b>1.605</b>	<b>1.526</b>	<b>953</b>
Rwanda	273	308	337	274
Salvador	0	0	0	11
Saoudi Arabia	0	0	1	1
Senegal	50	113	252	211
<b>Serbia</b>	<b>572</b>	<b>514</b>	<b>1.233</b>	<b>777</b>
Sierra Leone	42	45	65	53
Slovakia	239	261	53	28
Slovenia	0	1	0	0
Somalia	163	216	294	266
South Africa	1	1	0	1
South Corea	0	0	0	1
Spain	0	3	1	2
Sri Lanka	148	216	140	124
Sudan	62	89	92	49
Surinam	0	4	5	4
Syria	281	347	388	356
Tadzhikistan	1	5	7	5
Tanzania	49	90	89	112
Thailand	0	1	1	0
Timor-Leste	2	0	0	0
Togo	171	130	246	131
Tunisia	6	21	20	86
Turkey	284	259	277	239
Turkmenistan	0	5	3	3
Uganda	13	23	15	17
Ukraine	61	33	62	33
United Arabic Emirates	0	2	0	0
USA	0	0	3	5
Uzbekistan	15	14	20	16
Venezuela	1	0	2	2
Vietnam	9	10	18	2
Yemen	7	8	11	12
Zimbabwe	8	4	3	2
Others	14	17	10	12
Indefinite	126	199	254	191
Stateless Persons	6	7	7	0
Refugees	0	1	1	0
<b>Total</b>	<b>12.252</b>	<b>17.186</b>	<b>19.941</b>	<b>15.642</b>

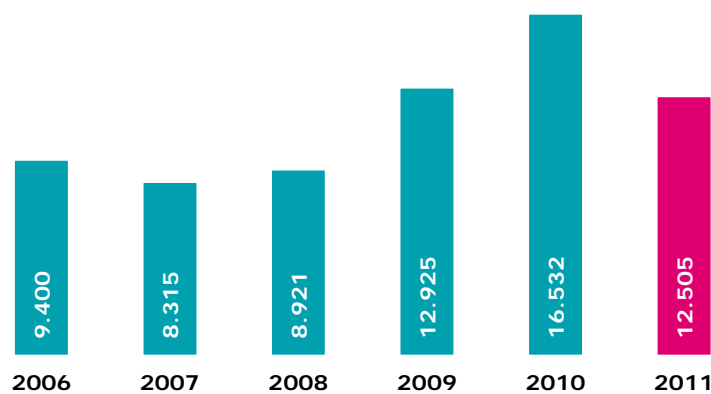
## 2. First asylum applications

### a. First applications per month (2006-2011)

	2006	2007	2008	2009	2010	2011	+/- in % 2011 vs 2010	+/- en % vs last month
January	875	712	873	998	1.184	1.470	24,16%	-12,29%
February	788	588	669	749	1.726	1.505	-12,80%	2,38%
March	828	773	663	828	1.164	1.811	55,58%	20,33%
April	737	570	637	836	886	1.590	79,46%	-12,20%
May	715	715	689	799	992	1.506	51,81%	-5,28%
June	705	599	676	862	1.077	1.405	30,45%	-6,71%
July	724	604	716	940	1.248	1.470	17,79%	4,63%
August	796	677	719	991	1.502	1.748	16,38%	18,91%
September	716	684	824	1.235	1.608			
October	859	861	902	1.428	1.773			
November	819	780	824	1.515	1.696			
December	838	752	729	1.744	1.676			
<b>Total</b>	<b>9.400</b>	<b>8.315</b>	<b>8.921</b>	<b>12.925</b>	<b>16.532</b>	<b>12.505</b>		



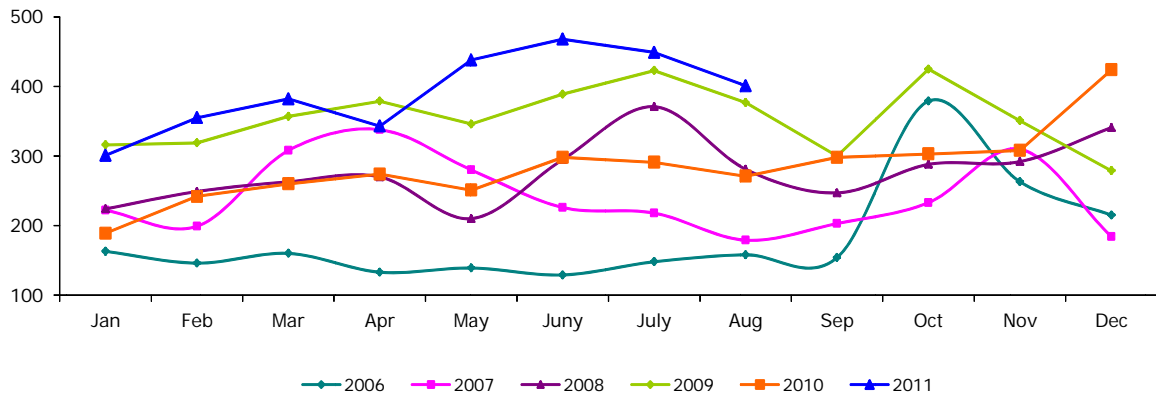
### b. First applications per year (from 2006 until the end of August 2011)



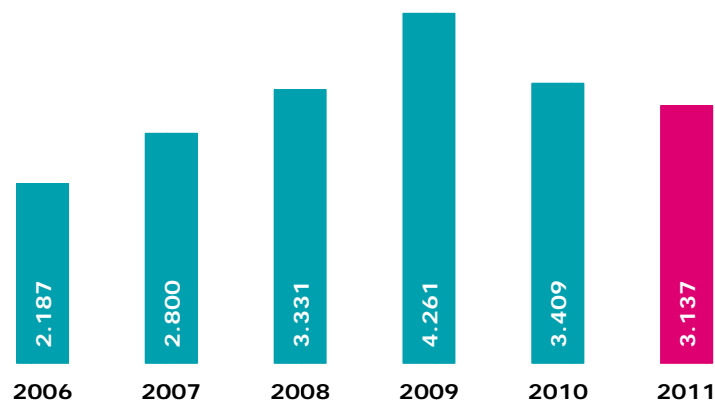
### 3. Multiple asylum applications

#### a. Multiple applications per month (2006-2011)

	2006	2007	2008	2009	2010	2011	+/- in % 2011 vs 2010	+/- in % vs last month
January	163	222	224	316	189	301	59,26%	-29,01%
February	146	199	249	319	242	355	46,69%	17,94%
March	160	308	263	357	260	382	46,92%	7,61%
April	133	338	270	379	274	343	25,18%	-10,21%
May	139	280	210	346	251	438	74,50%	27,70%
June	129	226	295	389	298	468	57,05%	6,85%
July	148	218	371	423	291	449	54,30%	-4,06%
August	158	179	281	377	271	401	47,97%	-10,69%
September	154	203	247	300	298			
October	379	233	288	425	303			
November	263	210	292	351	308			
December	215	184	341	279	424			
<b>Total</b>	<b>2.187</b>	<b>2.800</b>	<b>3.331</b>	<b>4.261</b>	<b>3.409</b>	<b>3.137</b>		



#### b. Multiple applications per year (from 2006 until the end of August 2011)



c. Top 10 of countries of origin for multiple applications in August 2011

Country of origin	Number	%
1 Kosovo	59	14,7%
2 Russia	46	11,5%
3 Macedonia	27	6,7%
4 Guinea	26	6,5%
5 Armenia	25	6,2%
6 Afghanistan	24	6,0%
7 Serbia	17	4,2%
8 Syria	16	4,0%
9 Iraq	14	3,5%
10 Congo RD	11	2,7%
Sri Lanka	11	2,7%
Other countries	125	31,2%
<b>Total August 2011</b>	<b>401</b>	<b>100%</b>
<b>Percentage top 10</b>	<b>68,8%</b>	

d. Top 10 of countries of origin for multiple applications in 2011

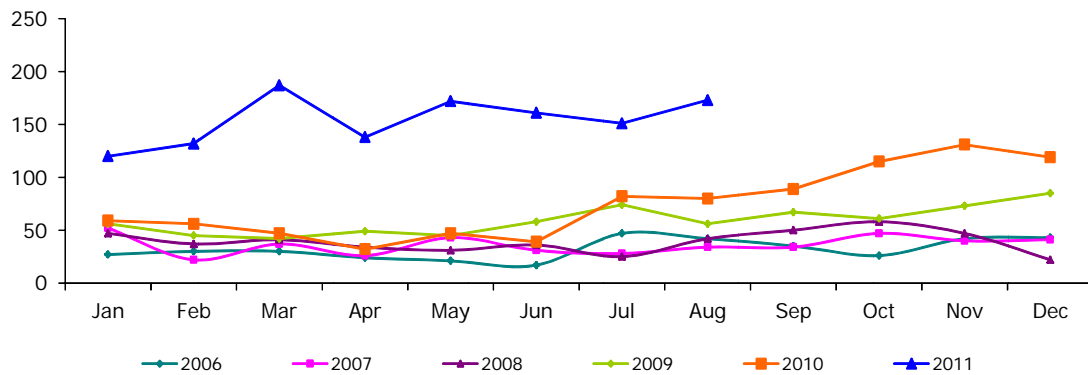
Country of origin	Number	%
1 Russia	323	10,3%
2 Kosovo	266	8,5%
3 Afghanistan	242	7,7%
4 Guinea	226	7,2%
5 Armenia	162	5,2%
6 Serbia	153	4,9%
7 Iraq	140	4,5%
8 Syria	106	3,4%
9 Macedonia	105	3,3%
10 Iran	86	2,7%
Other countries	1.328	42,3%
<b>Total 2011</b>	<b>3.137</b>	<b>100%</b>
<b>Percentage top 10</b>	<b>57,7%</b>	

#### 4. Unaccompanied foreign minors

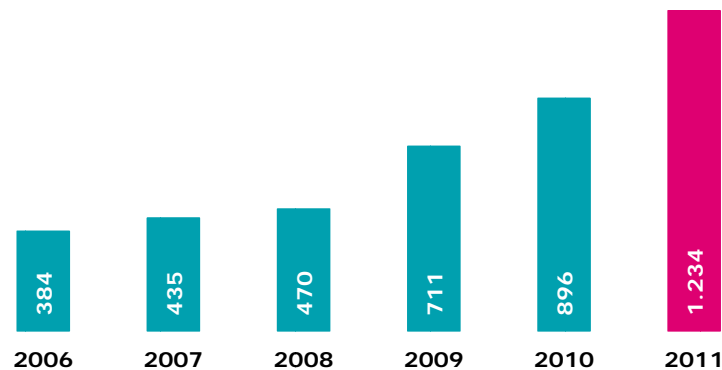
##### a. Applications from unaccompanied foreign minors per month (2006-2011)

	2006	2007	2008	2009	2010	2011*	+/- in % 2011 vs 2010	+/- in % vs last month
January	27	52	47	56	59	120	103,39%	0,84%
February	30	22	37	45	56	132	135,71%	10,00%
March	30	37	41	42	47	187	297,87%	41,67%
April	24	26	34	49	32	138	331,25%	-26,20%
May	21	43	31	45	47	172	265,96%	24,64%
June	17	31	36	58	39	161	312,82%	-6,40%
July	47	28	25	74	82	151	84,15%	-6,21%
August	42	34	42	56	80	173	116,25%	14,57%
September	35	34	50	67	89			
October	26	47	58	61	115			
November	42	40	47	73	131			
December	43	41	22	85	119			
<b>Total</b>	<b>384</b>	<b>435</b>	<b>470</b>	<b>711</b>	<b>896</b>	<b>1.234</b>		

\* Please note: the latest figures are liable to change according to the results of the bone age tests carried out to ascertain whether an alleged minor is younger than 18.



##### b. Applications from unaccompanied foreign minors per year (from 2006 until the end of August 2011)



c. Top 5 of countries of origin of unaccompanied minors in August 2011

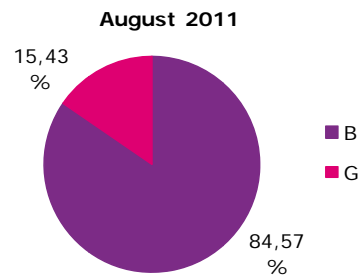
Country of origin	Number	%
1 Afghanistan	69	39,9%
2 Guinea	27	15,6%
3 Iraq	9	5,2%
4 Angola	5	2,9%
5 Congo DR	4	2,3%
Ghana	4	2,3%
Pakistan	4	2,3%
Other countries	51	29,5%
<b>Total August 2011</b>	<b>173</b>	<b>100%</b>
<b>Percentage top 5</b>	<b>70,5%</b>	

d. Top 5 of countries of origin of unaccompanied minors in 2011

Country of origin	Number	%
1 Afghanistan	625	50,6%
2 Guinea	179	14,5%
3 Iraq	41	3,3%
4 Congo RD	34	2,8%
5 Pakistan	33	2,7%
Other countries	322	26,1%
<b>Total 2011</b>	<b>1.234</b>	<b>100%</b>
<b>Percentage top 5</b>	<b>73,9%</b>	

e. Male/female ratio of unaccompanied minor applicants

	Boys	Girls
2007	68,40%	31,60%
2008	71,40%	28,60%
2009	77,98%	22,02%
2010	72,88%	27,12%
<b>2011</b>	<b>83,14%</b>	<b>16,86%</b>



### III. Asylum decisions in 2011

(source: CGRS)

#### 1. Decisions by the Immigration Department

	January-July	August	Total
Transfer of files to CGI	11.632	1.445	13.077
25/26 quater (Dublin)	1.165	101	1.266
13 quater	1.175	185	1.360
Renunciation, ...	980	5	985
<b>Total</b>	<b>14.952</b>	<b>1.736</b>	<b>16.688</b>

The Immigration Department decides on certain kinds of applications: applications falling under the Dublin Regulation, multiple applications, renunciations etc. Applications not who de not fall within to these categories are transferred to the CGRS.

#### 2. Decisions by the CGRS

##### a. Number of decisions

	Jan	Feb	March	April	May	June	July	Aug	Total
Recognition of refugee status	167	234	220	202	248	208	188	252	<b>1.719</b>
Granting of subsidiary protection	53	62	75	84	66	58	76	110	<b>584</b>
Refusal to grant refugee status and subsidiary protection	598	745	911	890	1.119	906	939	908	<b>7.016</b>
Refusal to take an asylum application into consideration (EU nationals)	3	10	16	9	7	5	14	17	<b>81</b>
Technical refusal	44	77	91	75	68	79	52	65	<b>551</b>
Exclusion from refugee status and from subsidiary	1	2	1		3		3	1	<b>11</b>
Exclusion from refugee status and refusal to grant subsidiary protection			1	1	3	1			<b>6</b>
Refusal to grant refugee status and exclusion form subsidiary protection			2	4				3	<b>9</b>
Abolition of refugee status and/or subsidiary protection						2	4		<b>6</b>
Withdrawal of refugee status and/or subsidiary protection	6	2	2	2	1	4	2	4	<b>23</b>
Renunciation + closing of the case + departure IOM	19	40	23	24	30	30	27	29	<b>222</b>
Application which does not proceed to judgment: regularization under article 55	4	5	9	3	2	5	5	4	<b>37</b>
Application which does not proceed to judgment: (naturalization, death, administrative reasons)	3	2	3	1	2	1	1	1	<b>14</b>
<b>Total</b>	<b>898</b>	<b>1.182</b>	<b>1.356</b>	<b>1.293</b>	<b>1.547</b>	<b>1.298</b>	<b>1.311</b>	<b>1.394</b>	<b>10.279</b>

**b. Recognition of refugee status, per nationality**

(in color and bold : countries in the top 10 of asylum applications in 2011)

Country of origin	Jan	Feb	March	April	May	June	July	Aug	Total
<b>Afghanistan</b>	<b>20</b>	<b>17</b>	<b>18</b>	<b>12</b>	<b>21</b>	<b>13</b>	<b>13</b>	<b>20</b>	<b>134</b>
Albania		3		4	2	3		4	16
Algeria		1			1				2
Angola	1			1	1		2		5
<b>Armenia</b>	<b>1</b>						<b>2</b>		<b>3</b>
Azerbaijan		2							2
Bangladesh	1								1
Belorussia	1			1					2
Benin					1				1
Burkina Faso					1				1
Burundi	1	2	3	3	1	2	4	6	22
Cameroon	1	14	10	5	8	8	6	6	58
Chad		1		1	2				4
China	14	7	19	18	9	10	2		79
Colombia	1		3		1				5
Congo Brazzaville						1			1
<b>Congo RD</b>	<b>7</b>	<b>10</b>	<b>2</b>	<b>1</b>	<b>4</b>	<b>4</b>	<b>6</b>	<b>6</b>	<b>40</b>
Djibouti		2		1	1	1	4	1	10
Egypt					1		1	1	3
Eritrea	1	1		1	4	3	15	3	28
Ethiopia								1	1
Gabon		1	1		3				5
Gambia	1		1			1	1	2	6
Ghana					1				1
<b>Guinea</b>	<b>27</b>	<b>47</b>	<b>32</b>	<b>31</b>	<b>45</b>	<b>49</b>	<b>30</b>	<b>39</b>	<b>300</b>
Indefinite	6	5	5	3	5	7	4	4	39
India			1						1
Iran	1	3	3	4	9	2	2	1	25
<b>Iraq</b>	<b>27</b>	<b>36</b>	<b>49</b>	<b>35</b>	<b>38</b>	<b>26</b>	<b>24</b>	<b>42</b>	<b>277</b>
Ivory Coast	1			1	1	3			6
Jordania			1						1
Kazakhstan						1			1
Kenia		2	2						4
<b>Kosovo</b>	<b>11</b>	<b>13</b>	<b>10</b>	<b>18</b>	<b>9</b>	<b>1</b>	<b>20</b>	<b>21</b>	<b>103</b>
Kuwait	1								1
Libanon	1			2	2	1	1	2	9
Liberia					1				1
<b>Macedonia</b>		<b>1</b>						<b>2</b>	<b>3</b>
Madagascar						1	1		2
Mali						2			2
Mauretania		1	2	1	1	2	1	1	9
Mauritius					1				1
Morocco	1	1							2
Myanmar			1	2		1		4	8
Niger	2	3	1	6					12
Nigeria		1						1	2
North Korea	2	4	3	1	1	3		1	15
<b>Pakistan</b>					<b>1</b>	<b>2</b>	<b>1</b>		<b>4</b>
Palestine				1		2		1	4
<b>Russia</b>	<b>9</b>	<b>5</b>	<b>9</b>	<b>12</b>	<b>15</b>	<b>16</b>	<b>12</b>	<b>23</b>	<b>101</b>
Rwanda	2	14	11	4	14	7	5	18	75
Senegal	5	6	7	7	10	10	6	15	66
<b>Serbia</b>	<b>4</b>	<b>9</b>		<b>4</b>	<b>5</b>	<b>5</b>	<b>5</b>	<b>6</b>	<b>38</b>
Sierra Leone		4				2			6
Somalia	3	1	6	4	12	10	8	7	51
Sri Lanka	2	4		4	8	4	4	6	32
Sudan			1				3	1	5
Syria	8	4	12	8			1	1	34
Tanzania	2	2	1					3	8
Togo		2	4		4	2	4	1	17
Turkey	2	4	2	5	3	2		2	20
Turkmenistan		1							1
Uganda				1	1				2
Zimbabwe						1			1
<b>Total</b>	<b>167</b>	<b>234</b>	<b>220</b>	<b>202</b>	<b>248</b>	<b>208</b>	<b>188</b>	<b>252</b>	<b>1.719</b>

**c. Granting of subsidiary protection, per nationality**

(in color and bold : countries in the top 10 of asylum applications in 2011)

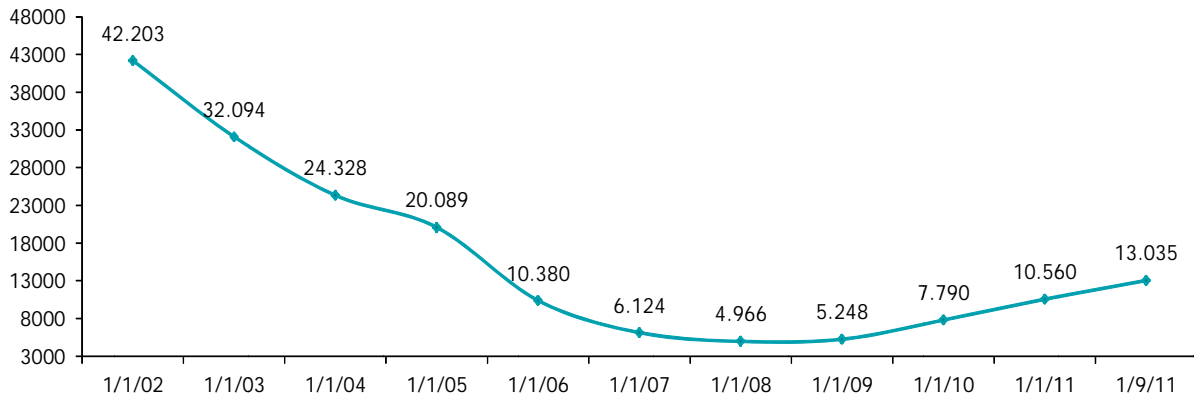
Country of origin	Jan	Feb	March	April	May	June	July	Aug	Total
<b>Afghanistan</b>	<b>27</b>	<b>31</b>	<b>22</b>	<b>30</b>	<b>19</b>	<b>19</b>	<b>21</b>	<b>29</b>	<b>198</b>
Angola					1				1
Burundi			1						1
Cameroon			1				1		2
<b>Congo (RD)</b>	<b>1</b>		<b>2</b>				<b>1</b>		<b>4</b>
El Salvador							2		2
Erytra								1	1
<b>Guinea</b>	<b>1</b>					<b>1</b>	<b>1</b>	<b>2</b>	<b>5</b>
Indefinite		4	1			1	3	2	11
<b>Iraq</b>	<b>21</b>	<b>22</b>	<b>44</b>	<b>53</b>	<b>41</b>	<b>32</b>	<b>41</b>	<b>68</b>	<b>322</b>
Palestine	1						1	2	4
Russia								2	2
Somalia	2	4	1	1	4	5	5	1	23
Sudan			1		1			2	4
Tanzania			2						2
Togo								1	1
Yemen		1							1
<b>Total</b>	<b>53</b>	<b>62</b>	<b>75</b>	<b>84</b>	<b>66</b>	<b>58</b>	<b>76</b>	<b>110</b>	<b>584</b>

#### IV. Evolution of the caseload at the CGRS

(Caseload in assessing asylum applications at the CGRS)

At the end of August 2011, the CGRA had a total caseload of **13,035** dossiers, of which **4,500** dossiers may be considered a normal workload. The backlog as such amounted therefore to **8.535** dossiers.

**Caseload per year**



**Caseload per month in 2010 and January - August 2011**

