



**OFFICE OF THE COMMISSIONER
GENERAL FOR REFUGEES AND
STATELESS PERSONS**

ASYLUM STATISTICS
June 2011

Publisher: Office of the Commissioner General for Refugees and Stateless Persons
Communication – Information – Press
cgra.info@ibz.fgov.be

Contact: Tine Van Valckenborgh – tine.vanvalckenborgh@ibz.fgov.be – (+32) 2 205 50 56

Date: 06/07/2011

Table

| | |
|---|-----------|
| I. Asylum figures in 2011 | 2 |
| 1. Annually | |
| 2. In June | |
| II. Asylum applications in Belgium | 3 |
| 1. Number of asylum applications (first applications + multiple applications) | 3 |
| a. Applications per month (2006-2011) | |
| b. Applications per year (from 1990-2011) | |
| c. Top 10 of countries of origin in June 2011 | |
| d. Top 10 of countries of origin in 2011 | |
| e. Asylum applications – male/female ration in 2007-2011 | |
| f. Asylum applications in 2008, 2009, 2010 and 2011 according to nationality | |
| 2. First asylum applications | 6 |
| a. First applications per month (2006-2011) | |
| b. First applications per year (2006-2011) | |
| 3. Multiple asylum applications | 7 |
| a. Multiple applications per month (2006-2011) | |
| b. Multiple applications per year (2006-2011) | |
| c. Top 10 of countries of origin for multiple applications in June 2011 | |
| d. Top 10 of countries of origin for multiple applications in 2011 | |
| 4. Unaccompanied foreign minors | 9 |
| a. Applications from unaccompanied minors per month (2006-2011) | |
| b. Applications from unaccompanied minors per year (2006-2011) | |
| c. Top 5 of countries of origin of unaccompanied minors in June 2011 | |
| d. Top 5 of countries of origin of unaccompanied minors in 2011 | |
| e. Male/female ratio of unaccompanied foreign minor applicants in 2007-2011 | |
| III. Asylum decisions in 2011 | 11 |
| 1. Decisions by the Immigration Department | |
| 2. Decisions by the CGRS | |
| a. Number of decisions | |
| b. Recognition of refugee status, per nationality | |
| c. Granting subsidiary protection status, per nationality | |
| IV. Evolution of the caseload at the CGRS..... | 14 |

I. Asylum figures in 2011

(source: Immigration department)

1. Annually

| Asylum applications | Number of files | % of asylum applications |
|--|---------------------|--------------------------|
| Number of asylum applications | 11.574 | |
| First asylum applications | 9.286 | 80,23% |
| Multiple asylum applications | 2.288 | 19,77% |
| Unaccompanied foreign minors | 958 | 8,28% |
| Decisions | Number of decisions | % of decisions |
| CGRS decisions | 7.569 | |
| Recognition of refugee status | 1.277 | 16,87% |
| Subsidiary Protection (SP) | 398 | 5,26% |
| Refusal to grant refugee status and SP | 5.167 | 68,27% |
| Other | 727 | 9,60% |
| | | |
| Backlog at the CGRA | 13.626 | |

2. June 2011

| Asylum applications | Number of files | % of asylum applications |
|--|---------------------|--------------------------|
| Number of asylum applications | 1.873 | |
| First asylum applications | 1.405 | 75,01% |
| Multiple asylum applications | 468 | 24,99% |
| Unaccompanied foreign minors | 161 | 8,60% |
| Decisions | Number of decisions | % of decisions |
| CGRS decisions | 1.293 | |
| Recognition of refugee status | 206 | 15,93% |
| Subsidiary Protection (SP) | 58 | 4,49% |
| Refusal to grant refugee status and SP | 904 | 69,91% |
| Other | 125 | 9,67% |
| | | |
| Backlog at the CGRA | 13.626 | |

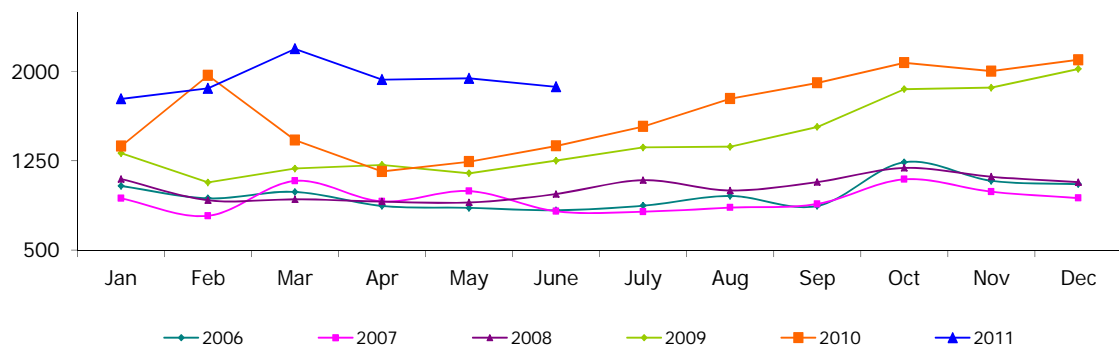
II. Asylum applications in Belgium

(source: Immigration Department unless otherwise stated)

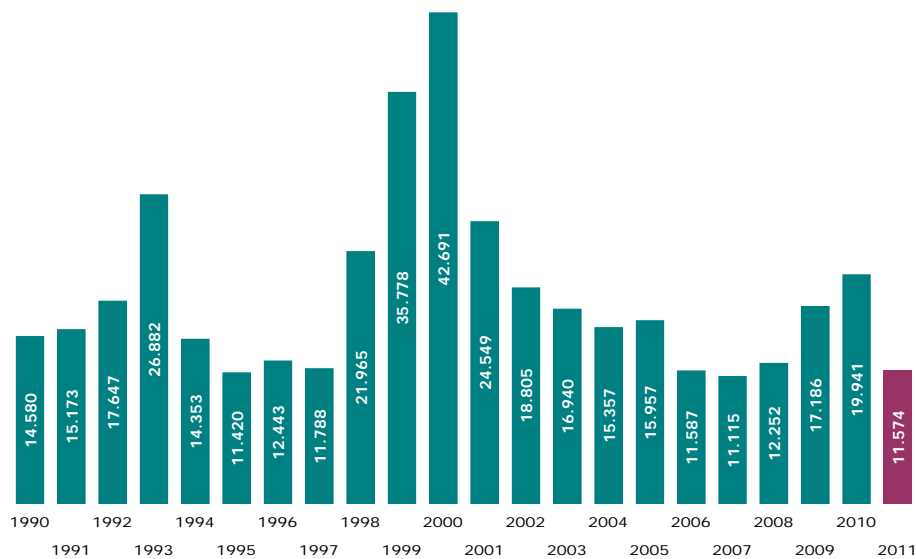
1. Number of asylum applications (first applications + multiple applications)

a. Applications per month (2006-2011)

| | 2006 | 2007 | 2008 | 2009 | 2010 | 2011 | +/- in % 2011 vs 2010 | +/- in % last month |
|--------------|---------------|---------------|---------------|---------------|---------------|---------------|--------------------------|------------------------|
| January | 1.038 | 934 | 1.097 | 1.314 | 1.373 | 1.771 | 28,99% | -15,67% |
| February | 934 | 787 | 918 | 1.068 | 1.968 | 1.860 | -5,49% | 5,03% |
| March | 988 | 1.081 | 926 | 1.185 | 1.424 | 2.193 | 54,00% | 17,90% |
| April | 870 | 908 | 907 | 1.215 | 1.160 | 1.933 | 66,64% | -11,86% |
| May | 854 | 995 | 899 | 1.145 | 1.243 | 1.944 | 56,40% | 0,57% |
| June | 834 | 825 | 971 | 1.251 | 1.375 | 1.873 | 36,22% | -3,65% |
| July | 872 | 822 | 1.087 | 1.363 | 1.539 | | | |
| August | 954 | 856 | 1.000 | 1.368 | 1.773 | | | |
| September | 870 | 887 | 1.071 | 1.535 | 1.906 | | | |
| October | 1.238 | 1.094 | 1.190 | 1.853 | 2.076 | | | |
| November | 1.082 | 990 | 1.116 | 1.866 | 2.004 | | | |
| December | 1.053 | 936 | 1.070 | 2.023 | 2.100 | | | |
| Total | 11.587 | 11.115 | 12.252 | 17.186 | 19.941 | 11.574 | | |



b. Applications per year (from 1990 until the end of June 2011)



c. Top 10 of countries of origin in June 2011

| | Country of origin | Number | % |
|--------------------------|-------------------|--------------|-------------|
| 1 | Afghanistan | 258 | 13,8% |
| 2 | Iraq | 174 | 9,3% |
| 3 | Russia | 136 | 7,3% |
| 4 | Guinea | 125 | 6,7% |
| 5 | Congo RD | 85 | 4,5% |
| 6 | Pakistan | 83 | 4,4% |
| 7 | Kosovo | 72 | 3,8% |
| 8 | Syria | 60 | 3,2% |
| 9 | Armenia | 58 | 3,1% |
| 10 | Iran | 42 | 2,2% |
| | Other countries | 780 | 41,6% |
| Total June 2011 | | 1.873 | 100% |
| Percentage top 10 | | 58,4% | |

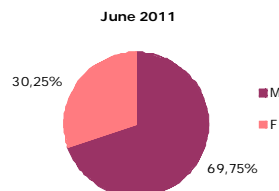
d. Top 10 of countries of origin in 2011

| | Country of origin | Number | % |
|--------------------------|-------------------|---------------|-------------|
| 1 | Afghanistan | 1.405 | 12,1% |
| 2 | Guinea | 975 | 8,4% |
| 3 | Iraq | 882 | 7,6% |
| 4 | Kosovo | 822 | 7,1% |
| 5 | Serbia | 687 | 5,9% |
| 6 | Russia | 656 | 5,7% |
| 7 | Macedonia | 476 | 4,1% |
| 8 | Congo RD | 438 | 3,8% |
| 9 | Pakistan | 349 | 3,0% |
| 10 | Armenia | 337 | 2,9% |
| | Other countries | 4.547 | 39,3% |
| Total 2011 | | 11.574 | 100% |
| Percentage top 10 | | 60,7% | |

e. Asylum applications : male/female ratio of applicants from 2007 until 2011

(source: CGRS)

| | Male | Female |
|------|--------|--------|
| 2007 | 67,14% | 32,86% |
| 2008 | 69,27% | 30,73% |
| 2009 | 69,17% | 30,83% |
| 2010 | 68,22% | 31,78% |
| 2011 | 70,03% | 29,97% |



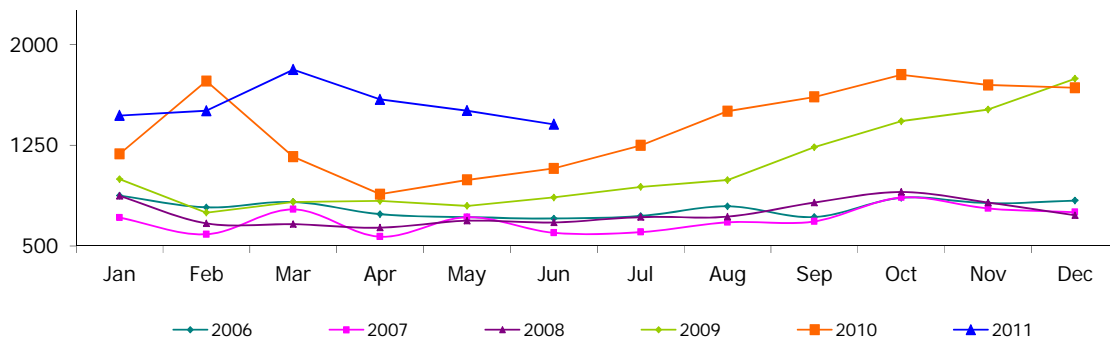
f. Applications in 2008, 2009, 2010 and 2011 according to nationality
 (in blue and bold : top 10 in 2011)

| Country of origin | 2008 | 2009 | 2010 | 2011 | Country of origin | 2008 | 2009 | 2010 | 2011 |
|----------------------|--------------|--------------|--------------|--------------|------------------------|---------------|---------------|---------------|---------------|
| Afghanistan | 879 | 1.659 | 1.411 | 1.405 | Libya | 15 | 19 | 19 | 41 |
| Albania | 172 | 256 | 204 | 158 | Lithuania | 1 | 5 | 1 | 1 |
| Algeria | 206 | 275 | 287 | 134 | Macedonia | 122 | 201 | 1.082 | 476 |
| Angola | 133 | 142 | 153 | 82 | Madagascar | 1 | 3 | 2 | 4 |
| Argentina | 0 | 0 | 8 | 0 | Malaysia | 0 | 2 | 0 | 0 |
| Armenia | 461 | 1.099 | 986 | 337 | Mali | 5 | 11 | 25 | 10 |
| Azerbaijan | 53 | 54 | 72 | 38 | Malta | 0 | 0 | 2 | 0 |
| Bangladesh | 79 | 75 | 177 | 156 | Mauretania | 128 | 187 | 206 | 87 |
| Belorussia | 58 | 40 | 53 | 22 | Mauritius | 0 | 1 | 3 | 5 |
| Benin | 16 | 50 | 56 | 22 | Mexico | 0 | 1 | 1 | 1 |
| Bhutan | 34 | 24 | 19 | 3 | Moldova | 14 | 29 | 14 | 3 |
| Bosnia-Herzegovina | 71 | 90 | 106 | 70 | Mongolia | 43 | 85 | 61 | 25 |
| Brasil | 1 | 2 | 3 | 0 | Montenegro | 7 | 12 | 14 | 16 |
| Bulgaria | 46 | 101 | 79 | 31 | Morocco | 36 | 53 | 46 | 33 |
| Burkina-Faso | 32 | 52 | 69 | 37 | Mozambique | 0 | 0 | 0 | 1 |
| Burundi | 106 | 120 | 132 | 79 | Myanmar | 9 | 8 | 14 | 2 |
| Cameroon | 367 | 302 | 357 | 236 | Nepal | 39 | 65 | 203 | 120 |
| Canada | 1 | 0 | 0 | 0 | Netherlands | 0 | 2 | 1 | 0 |
| Cape Verde | 1 | 0 | 0 | 0 | Niger | 57 | 71 | 78 | 33 |
| Central African Rep. | 7 | 6 | 4 | 1 | Nigeria | 59 | 101 | 138 | 88 |
| Chad | 16 | 16 | 21 | 2 | North Korea | 2 | 4 | 16 | 21 |
| China | 189 | 329 | 235 | 175 | Pakistan | 150 | 233 | 340 | 349 |
| Colombia | 4 | 8 | 13 | 2 | Palestina | 5 | 9 | 37 | 25 |
| Congo RD | 579 | 670 | 786 | 438 | Panama | 0 | 2 | 0 | 0 |
| Congo RP | 30 | 14 | 22 | 13 | Peru | 0 | 1 | 0 | 0 |
| Croatia | 3 | 16 | 15 | 3 | Philippines | 0 | 1 | 0 | 1 |
| Cuba | 2 | 3 | 2 | 1 | Poland | 2 | 6 | 0 | 0 |
| Czech Rep. | 45 | 48 | 21 | 16 | Romania | 43 | 98 | 56 | 40 |
| Djibouti | 26 | 39 | 31 | 17 | Russia | 1.620 | 1.605 | 1.526 | 656 |
| Dominican Rep. | 1 | 9 | 1 | 4 | Rwanda | 273 | 308 | 337 | 205 |
| Ecuador | 2 | 0 | 0 | 0 | Salvador | 0 | 0 | 0 | 10 |
| Egypt | 24 | 29 | 29 | 50 | Saudi Arabia | 0 | 0 | 1 | 1 |
| Equatorial Guinea | 0 | 3 | 3 | 1 | Senegal | 50 | 113 | 252 | 152 |
| Eritrea | 35 | 69 | 110 | 32 | Serbia | 572 | 514 | 1.233 | 687 |
| Estonia | 0 | 0 | 1 | 0 | Sierra Leone | 42 | 45 | 65 | 39 |
| Ethiopia | 71 | 89 | 72 | 21 | Slovakia | 239 | 261 | 53 | 16 |
| France | 0 | 0 | 0 | 3 | Slovenia | 0 | 1 | 0 | 0 |
| Gabon | 4 | 5 | 10 | 1 | Somalia | 163 | 216 | 294 | 186 |
| Gambia | 35 | 41 | 57 | 27 | South Africa | 1 | 1 | 0 | 0 |
| Georgia | 222 | 327 | 323 | 140 | Spain | 0 | 3 | 1 | 1 |
| Germany | 0 | 2 | 0 | 0 | Sri Lanka | 148 | 216 | 140 | 84 |
| Ghana | 20 | 29 | 65 | 43 | Sudan | 62 | 89 | 92 | 36 |
| Greece | 0 | 0 | 1 | 0 | Surinam | 0 | 4 | 5 | 3 |
| Guatemala | 0 | 7 | 1 | 0 | Syria | 281 | 347 | 388 | 237 |
| Guinea | 661 | 1.052 | 1.398 | 975 | Tadzhikistan | 1 | 5 | 7 | 4 |
| Guinea-Bissau | 1 | 3 | 5 | 4 | Tanzania | 49 | 90 | 89 | 89 |
| Guyana | 0 | 1 | 0 | 0 | Thailand | 0 | 1 | 1 | 0 |
| Haiti | 1 | 1 | 9 | 4 | Timor-Leste | 2 | 0 | 0 | 0 |
| Hungary | 16 | 143 | 36 | 7 | Togo | 171 | 130 | 246 | 98 |
| India | 84 | 123 | 151 | 82 | Tunisia | 6 | 21 | 20 | 66 |
| Indonesia | 1 | 3 | 0 | 0 | Turkey | 284 | 259 | 277 | 189 |
| Iran | 614 | 732 | 386 | 209 | Turkmenistan | 0 | 5 | 3 | 2 |
| Iraq | 1.070 | 1.386 | 1.769 | 882 | Uganda | 13 | 23 | 15 | 11 |
| Israel | 18 | 8 | 7 | 6 | Ukraine | 61 | 33 | 62 | 23 |
| Italy | 0 | 0 | 1 | 1 | United Arabic Emirates | 0 | 2 | 0 | 0 |
| Ivory Coast | 91 | 88 | 173 | 242 | USA | 0 | 0 | 3 | 3 |
| Jamaica | 4 | 1 | 1 | 0 | Uzbekistan | 15 | 14 | 20 | 11 |
| Jordania | 21 | 15 | 10 | 13 | Venezuela | 1 | 0 | 2 | 2 |
| Kampuchea | 0 | 1 | 0 | 0 | Vietnam | 9 | 10 | 18 | 2 |
| Kazakhstan | 16 | 44 | 75 | 37 | Yemen | 7 | 8 | 11 | 11 |
| Kenia | 55 | 42 | 65 | 27 | Zimbabwe | 8 | 4 | 3 | 2 |
| Kirghizistan | 14 | 19 | 117 | 51 | Others | 14 | 15 | 10 | 10 |
| Kosovo | 478 | 1.539 | 1.848 | 822 | Indefinite | 126 | 199 | 254 | 131 |
| Kuwait | 1 | 0 | 1 | 0 | Stateless Persons | 6 | 7 | 7 | 0 |
| Latvia | 5 | 3 | 2 | 0 | Refugees | 0 | 1 | 1 | 0 |
| Libanon | 85 | 95 | 70 | 38 | Total | 12.252 | 17.186 | 19.941 | 11.574 |
| Liberia | 23 | 27 | 27 | 25 | | | | | |

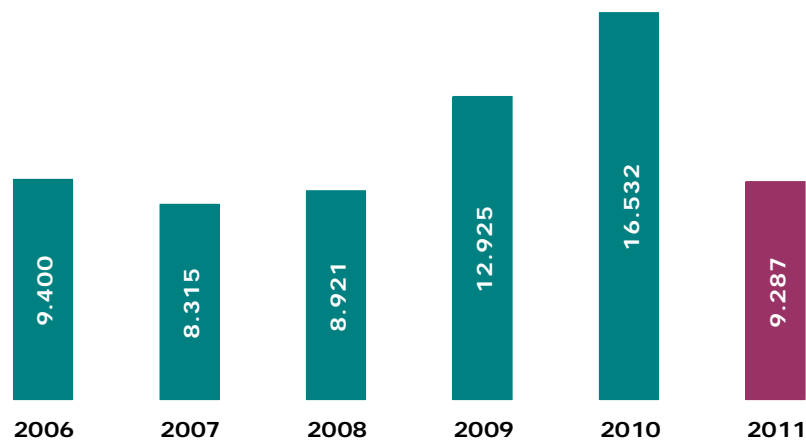
2. First asylum applications

a. First applications per month (2006-2011)

| | 2006 | 2007 | 2008 | 2009 | 2010 | 2011 | +/- in % 2011 vs 2010 | +/- en % last month |
|--------------|--------------|--------------|--------------|---------------|---------------|--------------|--------------------------|------------------------|
| January | 875 | 712 | 873 | 998 | 1.184 | 1.470 | 24,16% | -12,29% |
| February | 788 | 588 | 669 | 749 | 1.726 | 1.505 | -12,80% | 2,38% |
| March | 828 | 773 | 663 | 828 | 1.164 | 1.811 | 55,58% | 20,33% |
| April | 737 | 570 | 637 | 836 | 886 | 1.590 | 79,46% | -12,20% |
| May | 715 | 715 | 689 | 799 | 992 | 1.506 | 51,81% | -5,28% |
| June | 705 | 599 | 676 | 862 | 1.077 | 1.405 | 30,45% | -6,71% |
| July | 724 | 604 | 716 | 940 | 1.248 | | | |
| August | 796 | 677 | 719 | 991 | 1.502 | | | |
| September | 716 | 684 | 824 | 1.235 | 1.608 | | | |
| October | 859 | 861 | 902 | 1.428 | 1.773 | | | |
| November | 819 | 780 | 824 | 1.515 | 1.696 | | | |
| December | 838 | 752 | 729 | 1.744 | 1.676 | | | |
| Total | 9.400 | 8.315 | 8.921 | 12.925 | 16.532 | 9.287 | | |



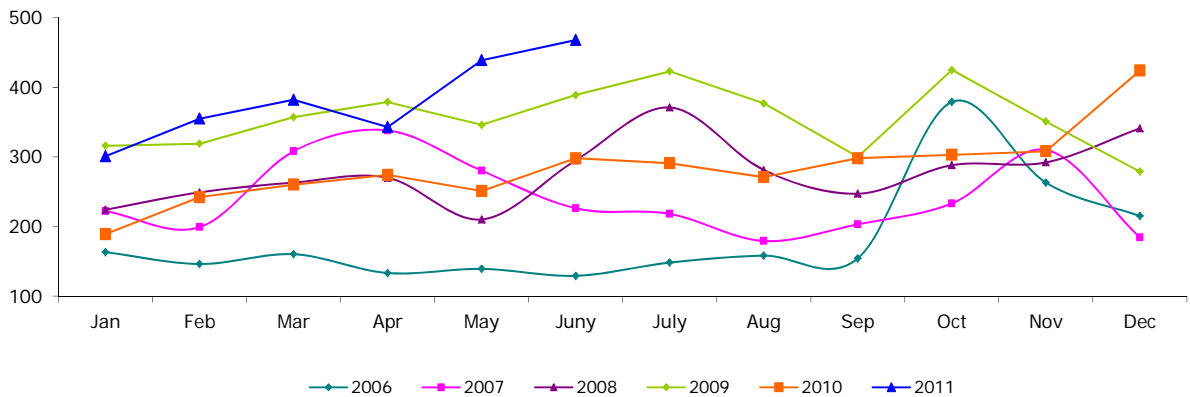
b. First applications per year (from 2006 until the end of June 2011)



3. Multiple asylum applications

a. Multiple applications per month (2006-2011)

| | 2006 | 2007 | 2008 | 2009 | 2010 | 2011 | +/- in % 2011 vs 2010 | +/- in % last month |
|--------------|--------------|--------------|--------------|--------------|--------------|--------------|--------------------------|------------------------|
| January | 163 | 222 | 224 | 316 | 189 | 301 | 59,26% | -29,01% |
| February | 146 | 199 | 249 | 319 | 242 | 355 | 46,69% | 17,94% |
| March | 160 | 308 | 263 | 357 | 260 | 382 | 46,92% | 7,61% |
| April | 133 | 338 | 270 | 379 | 274 | 343 | 25,18% | -10,21% |
| May | 139 | 280 | 210 | 346 | 251 | 439 | 74,90% | 27,99% |
| June | 129 | 226 | 295 | 389 | 298 | 468 | 57,05% | 6,61% |
| July | 148 | 218 | 371 | 423 | 291 | | | |
| August | 158 | 179 | 281 | 377 | 271 | | | |
| September | 154 | 203 | 247 | 300 | 298 | | | |
| October | 379 | 233 | 288 | 425 | 303 | | | |
| November | 263 | 210 | 292 | 351 | 308 | | | |
| December | 215 | 184 | 341 | 279 | 424 | | | |
| Total | 2.187 | 2.800 | 3.331 | 4.261 | 3.409 | 2.288 | | |



b. Multiple applications per year (from 2006 until the end of June 2011)



c. Top 10 of countries of origin for multiple applications in June 2011

| | Country of origin | Number | % |
|--------------------------|-------------------|--------------|-------------|
| 1 | Russia | 55 | 11,8% |
| 2 | Afghanistan | 34 | 7,3% |
| 3 | Guinea | 32 | 6,8% |
| 4 | Kosovo | 30 | 6,4% |
| 5 | Armenia | 29 | 6,2% |
| 6 | Rwanda | 23 | 4,9% |
| 7 | Syria | 22 | 4,7% |
| 8 | Iraq | 20 | 4,3% |
| 9 | Iran | 18 | 3,8% |
| | Serbia | 18 | 3,8% |
| 10 | Tanzania | 17 | 3,6% |
| | Other countries | 170 | 36,3% |
| Total June 2011 | | 468 | 100% |
| Percentage top 10 | | 63,7% | |

d. Top 10 of countries of origin for multiple applications in 2011

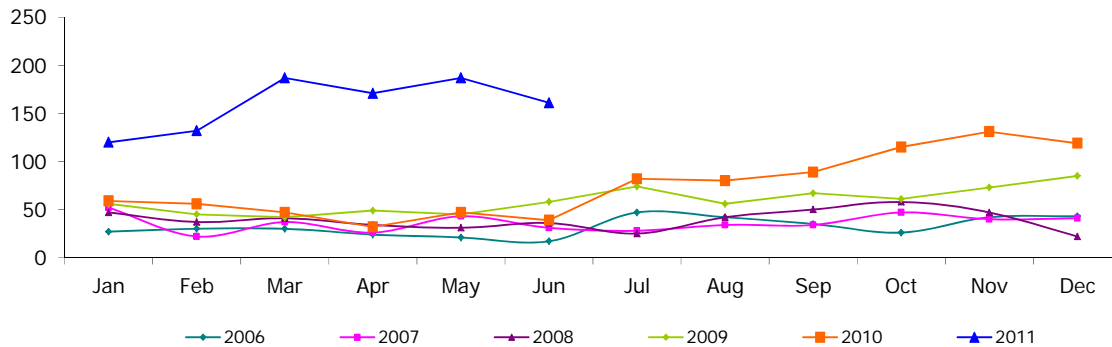
| | Country of origin | Number | % |
|--------------------------|-------------------|--------------|-------------|
| 1 | Russia | 223 | 9,7% |
| 2 | Afghanistan | 184 | 8,0% |
| 3 | Kosovo | 168 | 7,3% |
| 4 | Guinea | 167 | 7,3% |
| 5 | Serbia | 115 | 5,0% |
| 6 | Armenia | 112 | 4,9% |
| 7 | Iraq | 110 | 4,8% |
| 8 | Syria | 74 | 3,2% |
| 9 | Cameroon | 70 | 3,1% |
| | China | 70 | 3,1% |
| 10 | Iran | 66 | 2,9% |
| | Other countries | 929 | 40,6% |
| Total 2011 | | 2.288 | 100% |
| Percentage top 10 | | 59,4% | |

4. Unaccompanied foreign minors

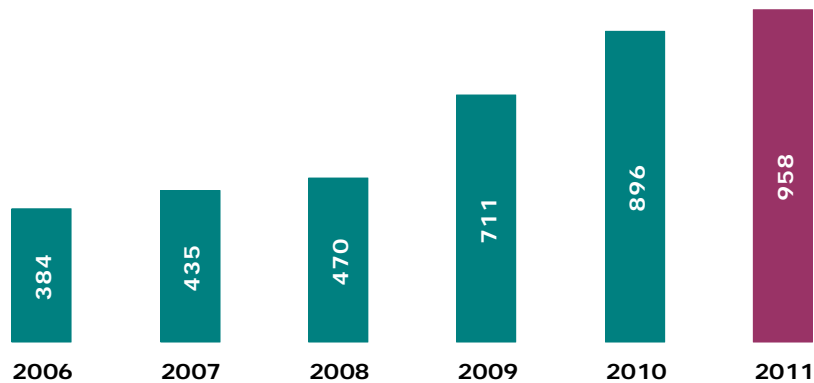
a. Applications from unaccompanied foreign minors per month (2006-2011)

| | 2006 | 2007 | 2008 | 2009 | 2010 | 2011* | +/- in % 2011 vs 2010 | +/- in % last month |
|--------------|------------|------------|------------|------------|------------|------------|--------------------------|------------------------|
| January | 27 | 52 | 47 | 56 | 59 | 120 | 103,39% | 0,84% |
| February | 30 | 22 | 37 | 45 | 56 | 132 | 135,71% | 10,00% |
| March | 30 | 37 | 41 | 42 | 47 | 187 | 297,87% | 41,67% |
| April | 24 | 26 | 34 | 49 | 32 | 171 | 434,38% | -8,56% |
| May | 21 | 43 | 31 | 45 | 47 | 187 | 297,87% | 9,36% |
| June | 17 | 31 | 36 | 58 | 39 | 161 | 312,82% | -13,90% |
| July | 47 | 28 | 25 | 74 | 82 | | | |
| August | 42 | 34 | 42 | 56 | 80 | | | |
| September | 35 | 34 | 50 | 67 | 89 | | | |
| October | 26 | 47 | 58 | 61 | 115 | | | |
| November | 42 | 40 | 47 | 73 | 131 | | | |
| December | 43 | 41 | 22 | 85 | 119 | | | |
| Total | 384 | 435 | 470 | 711 | 896 | 958 | | |

* Please note: the latest figures are liable to change according to the results of the bone age tests carried out to ascertain whether an alleged minor is younger than 18.



b. Applications from unaccompanied foreign minors per year (from 2006 until the end of May 2011)



c. Top 5 of countries of origin of unaccompanied minors in June 2011

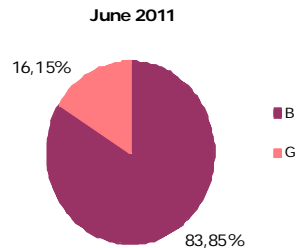
| Country of origin | Number | % |
|-------------------------|--------------|-------------|
| 1 Afghanistan | 91 | 56,5% |
| 2 Guinea | 20 | 12,4% |
| 3 Somalie | 9 | 5,6% |
| 4 Iraq | 6 | 3,7% |
| 5 Congo RD | 4 | 2,5% |
| Pakistan | 4 | 2,5% |
| Other countries | 27 | 16,8% |
| Total June 2011 | 161 | 100% |
| Percentage top 5 | 83,2% | |

d. Top 5 of countries of origin of unaccompanied minors in 2011

| Country of origin | Number | % |
|-------------------------|--------------|-------------|
| 1 Afghanistan | 507 | 52,9% |
| 2 Guinea | 140 | 14,6% |
| 3 Iraq | 29 | 3,0% |
| Pakistan | 29 | 3,0% |
| 4 Congo RD | 25 | 2,6% |
| 5 Somalia | 22 | 2,3% |
| Other countries | 206 | 21,5% |
| Total 2011 | 958 | 100% |
| Percentage top 5 | 78,5% | |

e. Male/female ratio of unaccompanied minor applicants

| | Boys | Girls |
|------|--------|--------|
| 2007 | 68,40% | 31,60% |
| 2008 | 71,40% | 28,60% |
| 2009 | 77,98% | 22,02% |
| 2010 | 72,88% | 27,12% |
| 2011 | 83,51% | 16,49% |



III. Asylum decisions in 2011

(source: CGRS)

1. Decisions by the Immigration Department

| | January-May | June | Total |
|---------------------------|---------------|--------------|---------------|
| Transfer of files to CGRS | 9.007 | 1.318 | 10.325 |
| 25/26 quater (Dublin) | 871 | 144 | 1.015 |
| 13 quater | 860 | 161 | 1.021 |
| Renunciation, ... | 817 | 6 | 823 |
| Total | 11.555 | 1.629 | 13.184 |

The Immigration Department decides on certain kinds of applications: applications falling under the Dublin Regulation, multiple applications, renunciations etc. Applications not who de not fall within to these categories are transferred to the CGRS.

2. Decisions by the CGRS

a. Number of decisions

| | Jan | Feb | March | April | May | June | Total |
|---|------------|--------------|--------------|--------------|--------------|--------------|--------------|
| Recognition of refugee status | 167 | 234 | 220 | 202 | 248 | 206 | 1.277 |
| Granting of subsidiary protection | 53 | 62 | 75 | 84 | 66 | 58 | 398 |
| Refusal to grant refugee status and subsidiary protection | 598 | 745 | 911 | 890 | 1.119 | 904 | 5.167 |
| Refusal to take an asylum application into consideration (EU nationals) | 3 | 10 | 16 | 9 | 7 | 5 | 50 |
| Technical refusal | 44 | 77 | 91 | 75 | 68 | 78 | 433 |
| Exclusion from refugee status and from subsidiary protection | 1 | 2 | 1 | | 3 | | 7 |
| Exclusion from refugee status and refusal to grant subsidiary protection | | 1 | 1 | 3 | 1 | | 6 |
| Refusal to grant refugee status and exclusion form subsidiary protection | | 2 | 4 | | | | 6 |
| Abolition of refugee status and/or subsidiary protection | | | | | | 2 | 2 |
| Withdrawal of refugee status and/or subsidiary protection | 6 | 2 | 2 | 2 | 1 | 4 | 17 |
| Renunciation + closing of the case + departure IOM | 19 | 40 | 23 | 24 | 30 | 30 | 166 |
| Application which does not proceed to judgment: regularization under article 55 | 4 | 5 | 9 | 3 | 2 | 5 | 28 |
| Application which does not proceed to judgment: (naturalization, death, administrative reasons) | 3 | 2 | 3 | 1 | 2 | 1 | 12 |
| Total | 898 | 1.182 | 1.356 | 1.293 | 1.547 | 1.293 | 7.569 |

b. Recognition of refugee status, per nationality

(in blue and bold : countries in the top 10 of asylum applications in 2011)

| Country of origin | Jan | Feb | March | April | May | June | Total |
|--------------------|------------|------------|------------|------------|------------|------------|--------------|
| Afghanistan | 20 | 17 | 18 | 12 | 21 | 13 | 101 |
| Albania | | 3 | | 4 | 2 | 1 | 10 |
| Algeria | | 1 | | | 1 | | 2 |
| Angola | 1 | | | 1 | 1 | | 3 |
| Armenia | 1 | | | | | | 1 |
| Azerbaijan | | 2 | | | | | 2 |
| Bangladesh | 1 | | | | | | 1 |
| Belorussia | 1 | | | 1 | | | 2 |
| Benin | | | | | 1 | | 1 |
| Burkina Faso | | | | | 1 | | 1 |
| Burundi | 1 | 2 | 3 | 3 | 1 | 2 | 12 |
| Cameroon | 1 | 14 | 10 | 5 | 8 | 8 | 46 |
| Chad | | 1 | | 1 | 2 | | 4 |
| China | 14 | 7 | 19 | 18 | 9 | 10 | 77 |
| Colombia | 1 | | 3 | | 1 | | 5 |
| Congo Brazzaville | | | | | | 1 | 1 |
| Congo RD | 7 | 10 | 2 | 1 | 4 | 4 | 28 |
| Djibouti | | 2 | | 1 | 1 | 1 | 5 |
| Egypt | | | | | 1 | | 1 |
| Eritrea | 1 | 1 | | 1 | 4 | 3 | 10 |
| Gabon | | 1 | 1 | | 3 | | 5 |
| Gambia | 1 | | 1 | | | 1 | 3 |
| Ghana | | | | | 1 | | 1 |
| Guinea | 27 | 47 | 32 | 31 | 45 | 49 | 231 |
| Indefinite | 6 | 5 | 5 | 3 | 5 | 7 | 31 |
| India | | | 1 | | | | 1 |
| Iran | 1 | 3 | 3 | 4 | 9 | 2 | 22 |
| Iraq | 27 | 36 | 49 | 35 | 38 | 26 | 211 |
| Ivory Coast | 1 | | | 1 | 1 | 3 | 6 |
| Jordania | | | 1 | | | | 1 |
| Kazakhstan | | | | | | 1 | 1 |
| Kenia | | 2 | 2 | | | | 4 |
| Kosovo | 11 | 13 | 10 | 18 | 9 | 1 | 62 |
| Kuwait | 1 | | | | | | 1 |
| Libanon | 1 | | | 2 | 2 | 1 | 6 |
| Liberia | | | | | 1 | | 1 |
| Macedonia | | 1 | | | | | 1 |
| Madagascar | | | | | | 1 | 1 |
| Mali | | | | | | 2 | 2 |
| Mauretania | | 1 | 2 | 1 | 1 | 2 | 7 |
| Mauritius | | | | | 1 | | 1 |
| Morocco | 1 | 1 | | | | | 2 |
| Myanmar | | | 1 | 2 | | 1 | 4 |
| Niger | 2 | 3 | 1 | 6 | | | 12 |
| Nigeria | | 1 | | | | | 1 |
| North Corea | 2 | 4 | 3 | 1 | 1 | 3 | 14 |
| Pakistan | | | | | 1 | 2 | 3 |
| Palestine | | | | 1 | | 2 | 3 |
| Russia | 9 | 5 | 9 | 12 | 15 | 16 | 66 |
| Rwanda | 2 | 14 | 11 | 4 | 14 | 7 | 52 |
| Senegal | 5 | 6 | 7 | 7 | 10 | 10 | 45 |
| Serbia | 4 | 9 | | 4 | 5 | 5 | 27 |
| Sierra Leone | | 4 | | | | 2 | 6 |
| Somalia | 3 | 1 | 6 | 4 | 12 | 10 | 36 |
| Sri Lanka | 2 | 4 | | 4 | 8 | 4 | 22 |
| Sudan | | | 1 | | | | 1 |
| Syria | 8 | 4 | 12 | 8 | | | 32 |
| Tanzania | 2 | 2 | 1 | | | | 5 |
| Togo | | 2 | 4 | | 4 | 2 | 12 |
| Turkey | 2 | 4 | 2 | 5 | 3 | 2 | 18 |
| Turkmenistan | | 1 | | | | | 1 |
| Uganda | | | | 1 | 1 | | 2 |
| Zimbabwe | | | | | | 1 | 1 |
| Total | 167 | 234 | 220 | 202 | 248 | 206 | 1.277 |

c. **Granting of subsidiary protection, per nationality**
 (in blue and bold : countries in the top 10 of asylum applications in 2011)

| Country of origin | Jan | Feb | March | April | May | June | Total |
|--------------------|-----------|-----------|-----------|-----------|-----------|-----------|------------|
| Afghanistan | 27 | 31 | 22 | 30 | 19 | 19 | 148 |
| Angola | | | | | 1 | | 1 |
| Burundi | | | 1 | | | | 1 |
| Cameroon | | | 1 | | | | 1 |
| Congo (RD) | 1 | | 2 | | | | 3 |
| Guinea | 1 | | | | | 1 | 1 |
| Indefinite | | 4 | 1 | | | 1 | 5 |
| Irak | 21 | 22 | 44 | 53 | 41 | 32 | 213 |
| Palestine | 1 | | | | | | 1 |
| Somalia | 2 | 4 | 1 | 1 | 4 | 5 | 17 |
| Sudan | | | 1 | | 1 | | 2 |
| Tanzania | | | 2 | | | | 2 |
| Yemen | | 1 | | | | | 1 |
| Total | 53 | 62 | 75 | 84 | 66 | 58 | 396 |

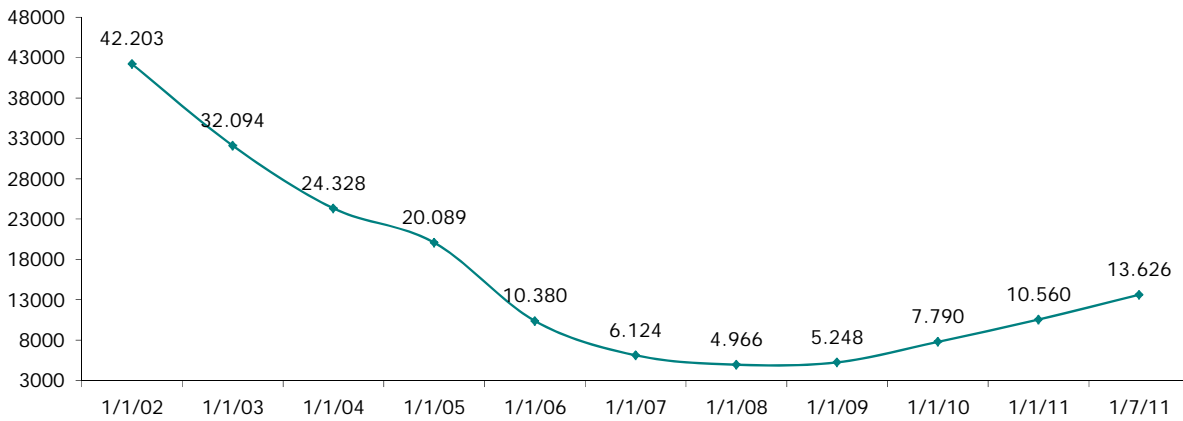
IV. Evolution of the caseload at the CGRS

(Caseload in assessing asylum applications at the CGRS)

At the end of June 2011, the CGRA had a total caseload of 13,666 dossiers, of which 4,500 dossiers may be considered a normal workload. The backlog as such amounted therefore to 9,126 dossiers.

Caseload per year

| | |
|--------|--------|
| 1/1/11 | 10.560 |
| 1/7/11 | 13.626 |



Caseload per month in 2010 and January - June 2011

