



**OFFICE OF THE COMMISSIONER
GENERAL FOR REFUGEES AND
STATELESS PERSONS**

ASYLUM STATISTICS
March 2011

Publisher: Office of the Commissioner General for Refugees and Stateless Persons
Communication – Information – Press
cgra.info@ibz.fgov.be

Contact: Tine Van Valckenborgh – tine.vanvalckenborgh@ibz.fgov.be – (+32) 2 205 50 56

Date: 14/04/2011

Table

I. Asylum figures in 2011	2
1. Annually	
2. In March	
II. Asylum applications in Belgium	3
1. Number of asylum applications (first applications + multiple applications).....	3
a. Applications per month (2006-2011)	
b. Applications per year (from 1990 until the end of March 2011)	
c. Top 10 of countries of origin in March 2011	
d. Top 10 of countries of origin in 2011	
e. Asylum applications –male/female ration in 2007-2011	
f. Asylum applications in 2008, 2009, 2010 and 2011 according to nationality	
2. First asylum applications	6
a. First applications per month (2006-2011)	
b. First applications per year (2006-2011)	
3. Multiple asylum applications.....	7
a. Multiple applications per month (2006-2011)	
b. Multiple applications per year (2006-2011)	
c. Top 10 of countries of origin for multiple applications in March 2011	
d. Top 10 of countries of origin for multiple applications in 2011	
4. Unaccompanied foreign minors.....	9
a. Applications from unaccompanied minors per month (2006-2011)	
b. Applications from unaccompanied minors per year (2006-2011)	
c. Top 5 of countries of origin of unaccompanied minors in March 2011	
d. Top 5 of countries of origin of unaccompanied minors in 2011	
e. Male/female ratio of unaccompanied foreign minor applicants in 2007-2011	
III. Asylum decisions in 2011	11
1. Decisions by the Immigration Department	
2. Decisions by the CGRS	
a. Number of decisions	
b. Recognition of refugee status, per nationality	
c. Granting subsidiary protection status, per nationality	
IV. Evolution of the backlog at the CGRS.....	14



I. Asylum figures in 2011

(source: Immigration department)

1. Annually

Asylum applications	Number of files	% of asylum applications
Number of asylum applications	5.824	
First asylum applications	4.786	82,18%
Multiple asylum applications	1.038	17,82%
Unaccompanied foreign minors	483	8,29%
Decisions	Number of decisions	% of decisions
CGRS decisions	3.435	
Recognition of refugee status	620	18,05%
Subsidiary Protection (SP)	190	5,53%
Refusal to grant refugee status and SP	2.495	72,63%
Other	130	3,78%
Backlog at the CGRA	12.745	

2. March 2011

Asylum applications	Number of files	% of asylum applications
Number of asylum applications	2.193	
First asylum applications	1.811	82,58%
Multiple asylum applications	382	17,42%
Unaccompanied foreign minors	196	8,94%
Decisions	Number of decisions	% of decisions
CGRS decisions	1.355	
Recognition of refugee status	219	16,16%
Subsidiary Protection (SP)	75	5,54%
Refusal to grant refugee status and SP	1.018	75,13%
Other	43	3,17%
Backlog at the CGRA	12.745	

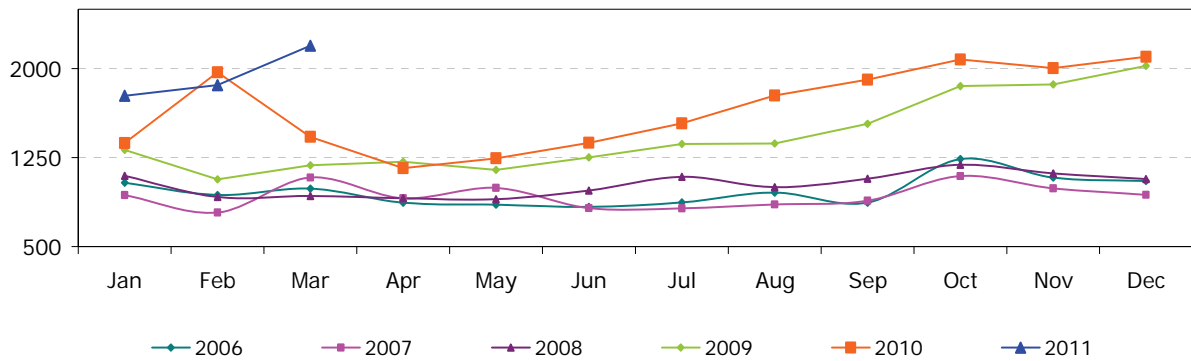
II. Asylum applications in Belgium

(source: Immigration Department unless otherwise stated)

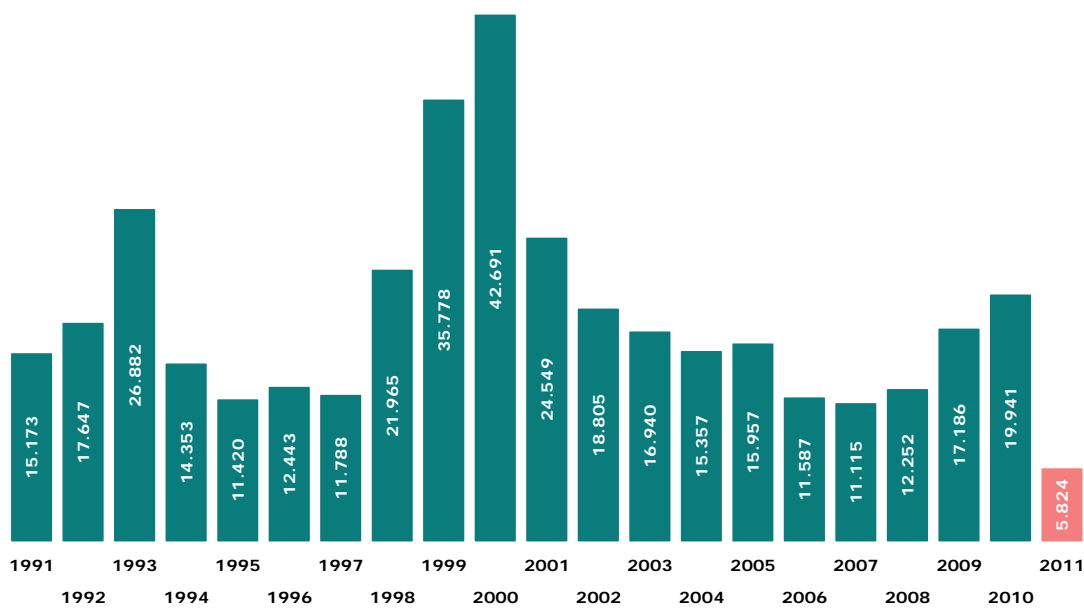
1. Number of asylum applications (first applications + multiple applications)

a. Applications per month (2006-2011)

	2006	2007	2008	2009	2010	2011	+/- in % 2011 vs 2010	+/- in % last month
January	1.038	934	1.097	1.314	1.373	1.771	28,99%	-15,67%
February	934	787	918	1.068	1.968	1.860	-5,49%	5,03%
March	988	1.081	926	1.185	1.424	2.193	54,00%	17,90%
April	870	908	907	1.215	1.160			
May	854	995	899	1.145	1.243			
June	834	825	971	1.251	1.375			
July	872	822	1.087	1.363	1.539			
August	954	856	1.000	1.368	1.773			
September	870	887	1.071	1.535	1.906			
October	1.238	1.094	1.190	1.853	2.076			
November	1.082	990	1.116	1.866	2.004			
December	1.053	936	1.070	2.023	2.100			
Total	11.587	11.115	12.252	17.186	19.941	5.824		



b. Applications per year (from 1990 until the end of March 2011)



Top 10 of countries of origin in March 2011

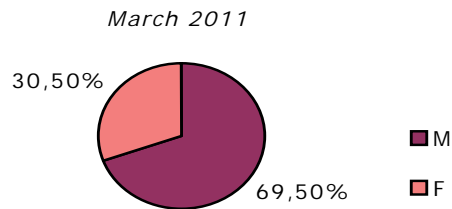
	Country of origin	Number	%
1	Afghanistan	267	12,2%
2	Guinea	198	9,0%
3	Serbia	183	8,3%
4	Kosovo	173	7,9%
5	Iraq	156	7,1%
6	Russia	106	4,8%
7	Macedonia	86	3,9%
8	Congo RD	82	3,7%
9	Armenia	61	2,8%
10	Ivory Coast	59	2,7%
	Other countries	822	37,5%
Total March 2011		2.193	100%
Percentage top 10		62,5%	

c. Top 10 of countries of origin in 2011

	Country of origin	Number	%
1	Afghanistan	616	10,6%
2	Guinea	513	8,8%
3	Kosovo	465	8,0%
4	Serbia	438	7,5%
5	Iras	431	7,4%
6	Russia	336	5,8%
7	Macedonia	261	4,5%
8	Congo RD	222	3,8%
9	Armenia	165	2,8%
10	Ivory Coast	142	2,4%
	Other countries	2.235	38,4%
Total 2011		5.824	100%
Percentage top 10		61,6%	

d. Asylum applications : male/female ratio of applicants from 2007 until 2011
 (source: CGRS)

	Male	Female
2007	67,14%	32,86%
2008	69,27%	30,73%
2009	69,17%	30,83%
2010	68,22%	31,78%
2011	69,36%	30,64%



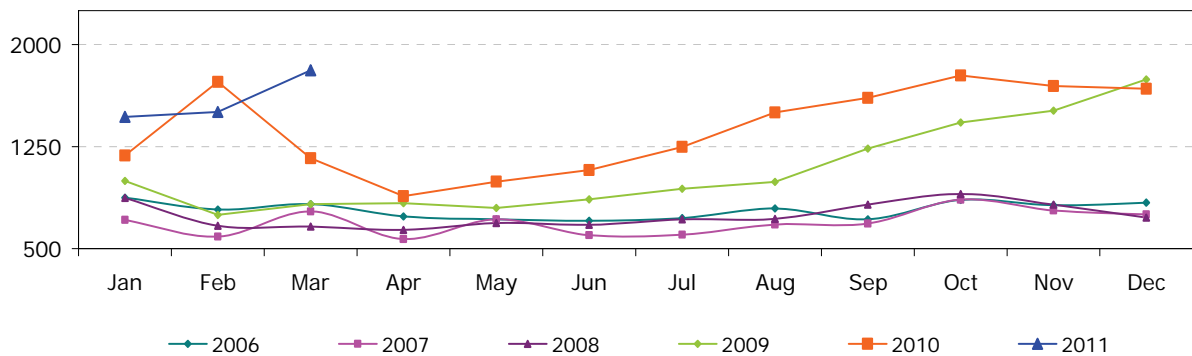
e. Applications in 2008, 2009, 2010 and 2011 according to nationality
 (in blue and bold : top 10 in 2011)

Country of origin	2008	2009	2010	2011	Country of origin	2008	2009	2010	2011
Afghanistan	879	1.659	1.411	612	Lithuania	1	5	1	0
Albania	172	256	204	64	Macedonia	122	201	1.082	261
Algeria	206	275	287	68	Madagascar	1	3	2	0
Angola	133	142	153	39	Malaysia	0	2	0	0
Argentina	0	0	8	0	Mali	5	11	25	4
Armenia	461	1.099	986	165	Malta	0	0	2	0
Azerbaijan	53	54	72	20	Mauretania	128	187	206	42
Bangladesh	79	75	177	77	Mauritius	0	1	3	5
Belorussia	58	40	53	13	Mexico	0	1	1	0
Benin	16	50	56	12	Moldova	14	29	14	1
Bhutan	34	24	19	2	Mongolia	43	85	61	15
Bosnia-Herzegovina	71	90	106	26	Montenegro	7	12	14	1
Brasil	1	2	3	0	Morocco	36	53	46	12
Bulgaria	46	101	79	16	Mozambique	0	0	0	1
Burkina-Faso	32	52	69	14	Myanmar	9	8	14	1
Burundi	106	120	132	36	Nepal	39	65	203	55
Cameroon	367	302	357	120	Netherlands	0	2	1	0
Canada	1	0	0	0	Niger	57	71	78	14
Cape Verde	1	0	0	0	Nigeria	59	101	138	49
Central African Rep.	7	6	4	0	North Korea	2	4	16	12
Chad	16	16	21	2	Pakistan	150	233	340	125
China	189	329	235	91	Palestina	5	9	37	16
Colombia	4	8	13	0	Panama	0	2	0	0
Congo RD	579	670	786	222	Peru	0	1	0	0
Congo RP	30	14	22	6	Philippines	0	1	0	0
Croatia	3	16	15	2	Poland	2	6	0	0
Cuba	2	3	2	0	Romania	43	98	56	21
Czech Rep.	45	48	21	7	Russia	1.620	1.605	1.526	336
Djibouti	26	39	31	12	Rwanda	273	308	337	102
Dominican Rep.	1	9	1	0	Salvador	0	0	0	10
Ecuador	2	0	0	0	Saoudi Arabia	0	0	1	1
Egypt	24	29	29	35	Senegal	50	113	252	82
Equatorial Guinea	0	3	3	0	Serbia	572	514	1.233	438
Eritrea	35	69	110	15	Sierra Leone	42	45	65	16
Estonia	0	0	1	0	Slovakia	239	261	53	7
Ethiopia	71	89	72	7	Slovenia	0	1	0	0
Gabon	4	5	10	1	Somalia	163	216	294	98
Gambia	35	41	57	11	South Africa	1	1	0	0
Georgia	222	327	323	74	Spain	0	3	1	0
Germany	0	2	0	0	Sri Lanka	148	216	140	49
Ghana	20	29	65	23	Sudan	62	89	92	19
Greece	0	0	1	0	Surinam	0	4	5	0
Guatemala	0	7	1	0	Syria	281	347	388	95
Guinea	661	1.052	1.398	513	Tadzhikistan	1	5	7	2
Guinea-Bissau	1	3	5	2	Tanzania	49	90	89	43
Guyana	0	1	0	0	Thailand	0	1	1	0
Haiti	1	1	9	4	Timor-Leste	2	0	0	0
Hungary	16	143	36	0	Togo	171	130	246	49
India	84	123	151	48	Tunisia	6	21	20	17
Indonesia	1	3	0	0	Turkey	284	259	277	97
Iran	614	732	386	103	Turkmenistan	0	5	3	1
Iraq	1.070	1.386	1.769	431	Uganda	13	23	15	6
Israel	18	8	7	5	Ukraine	61	33	62	13
Italy	0	0	1	0	United Arabic Emirates	0	2	0	0
Ivory Coast	91	88	173	142	USA	0	0	3	0
Jamaica	4	1	1	0	Uzbekistan	15	14	20	5
Jordan	21	15	10	7	Venezuela	1	0	2	0
Kampuchea	0	1	0	0	Vietnam	9	10	18	2
Kazakhstan	16	44	75	11	Yemen	7	8	11	8
Kenia	55	42	65	18	Zimbabwe	8	4	3	0
Kirghizistan	14	19	117	37					
Kosovo	478	1.539	1.848	465	Others	14	15	10	9
Kuwait	1	0	1	0	Indefinite	126	199	254	64
Latvia	5	3	2	0	Stateless Persons	6	7	7	0
Libanon	85	95	70	18	Refugees	0	1	1	0
Liberia	23	27	27	7					
Libya	15	19	19	17	Total	12.251	17.181	19.940	5.824

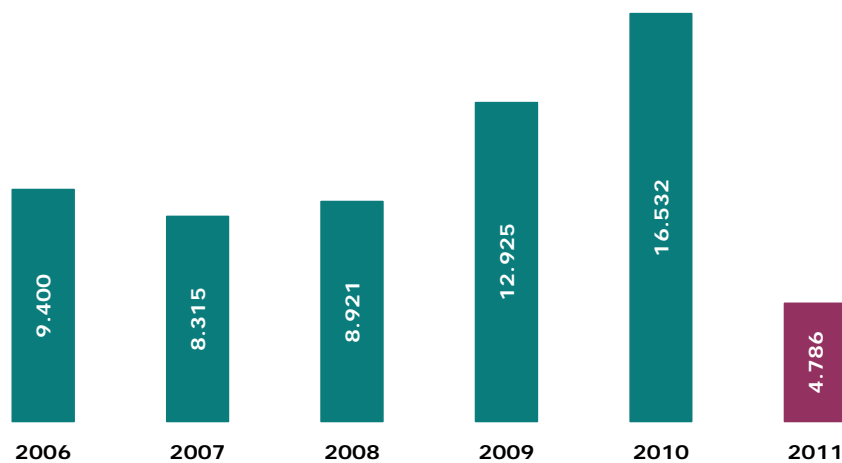
2. First asylum applications

a. First applications per month (2006-2011)

	2006	2007	2008	2009	2010	2011	+/- in % 2011 vs 2010	+/- en % last month
January	875	712	873	998	1.184	1.470	24,16%	-12,29%
February	788	588	669	749	1.726	1.505	-12,80%	2,38%
March	828	773	663	828	1.164	1.811	55,58%	20,33%
April	737	570	637	836	886			
May	715	715	689	799	992			
June	705	599	676	862	1.077			
July	724	604	716	940	1.248			
August	796	677	719	991	1.502			
September	716	684	824	1.235	1.608			
October	859	861	902	1.428	1.773			
November	819	780	824	1.515	1.696			
December	838	752	729	1.744	1.676			
Total	9.400	8.315	8.921	12.925	16.532	4.786		



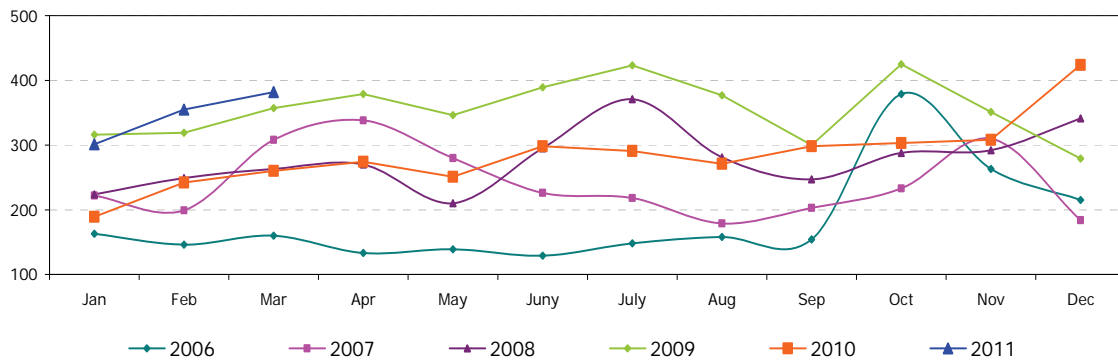
b. First applications per year (from 2006 until the end of March 2011)



3. Multiple asylum applications

a. Multiple applications per month (2006-2011)

	2006	2007	2008	2009	2010	2011	+/- in % 2011 vs 2010	+/- in % last month
January	163	222	224	316	189	301	59,26%	-29,01%
February	146	199	249	319	242	355	46,69%	17,94%
March	160	308	263	357	260	382	46,92%	7,61%
April	133	338	270	379	274			
May	139	280	210	346	251			
June	129	226	295	389	298			
July	148	218	371	423	291			
August	158	179	281	377	271			
September	154	203	247	300	298			
October	379	233	288	425	303			
November	263	210	292	351	308			
December	215	184	341	279	424			
Total	2.187	2.800	3.331	4.261	3.409	1.038		



b. Multiple applications per year (from 2006 until the end of March 2011)



c. Top 10 of countries of origin for multiple applications in March 2011

	Country of origin	Number	%
1	Guinea	34	8,9%
2	Russia	34	8,9%
3	Afghanistan	25	6,5%
4	Serbia	24	6,3%
5	Kosovo	22	5,8%
6	Iraq	15	3,9%
7	Cameroon	15	3,9%
8	Algeria	14	3,7%
9	Armenia	14	3,7%
10	Ivory Coast	13	3,4%
	Other countries	172	45,0%
Total March 2011		382	100%
Percentage top 10		55,0%	

d. Top 10 of countries of origin for multiple applications in 2011

	Country of origin	Number	%
1	Afghanistan	104	10,0%
2	Russia	95	9,2%
3	Guinea	77	7,4%
4	Kosovo	69	6,6%
5	Serbia	59	5,7%
6	Iraq	50	4,8%
7	China	40	3,9%
8	Armenia	34	3,3%
9	Cameroon	34	3,3%
10	Macedonia	34	3,3%
	Other countries	442	42,6%
Total 2011		1.038	100%
Percentage top 10		57,4%	

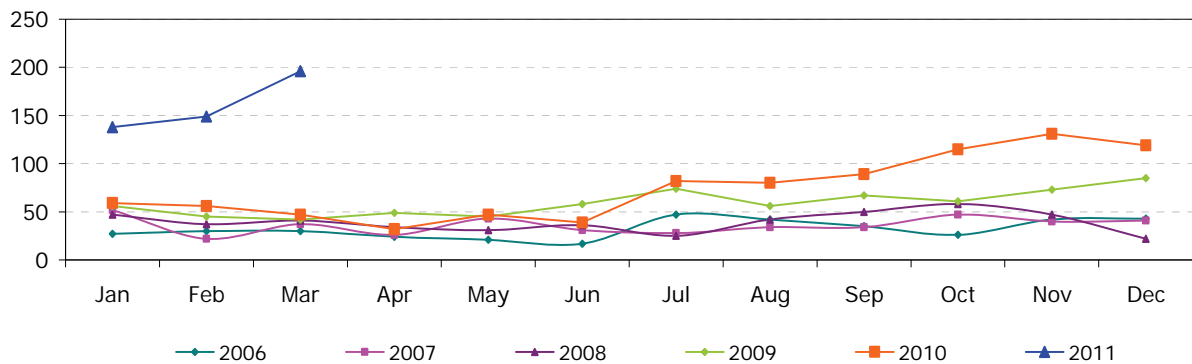


4. Unaccompanied foreign minors

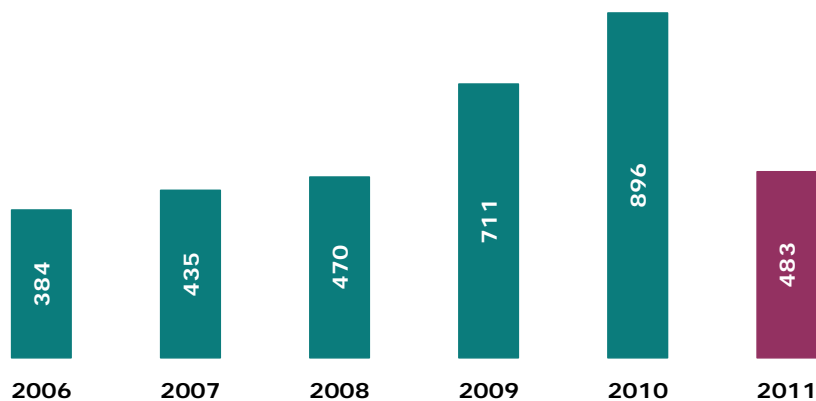
a. Applications from unaccompanied foreign minors per month (2006-2011)

	2006	2007	2008	2009	2010	2011*	+/- in % 2011 vs 2010	+/- in % last month
January	27	52	47	56	59	138	133,90%	15,97%
February	30	22	37	45	56	149	166,07%	7,97%
March	30	37	41	42	47	196	317,02%	31,54%
April	24	26	34	49	32			
May	21	43	31	45	47			
June	17	31	36	58	39			
July	47	28	25	74	82			
August	42	34	42	56	80			
September	35	34	50	67	89			
October	26	47	58	61	115			
November	42	40	47	73	131			
December	43	41	22	85	119			
Total	384	435	470	711	896	483		

* Please note: the latest figures are liable to change according to the results of the bone age tests carried out to ascertain whether an alleged minor is younger than 18.



b. Applications from unaccompanied foreign minors per year (from 2006 until the end of March 2011)



c. Top 5 of countries of origin of unaccompanied minors in March 2011

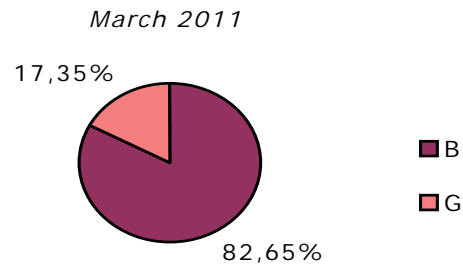
Country of origin	Number	%
1 Afghanistan	113	57,7%
2 Guinea	29	14,8%
3 Russia	5	2,6%
4 Angola	5	2,6%
5 Iraq	5	2,6%
Other countries	39	19,9%
Total March 2011	196	100%
Percentage top 5	80,1%	

d. Top 5 of countries of origin of unaccompanied minors in 2011

Country of origin	Number	%
1 Afghanistan	222	46,0%
2 Guinea	82	17,0%
3 Congo RD	22	4,6%
4 Iraq	18	3,7%
5 Rwanda	13	2,7%
Other countries	126	26,1%
Total 2011	483	100%
Percentage top 5	73,9%	

e. Male/female ratio of unaccompanied minor applicants

	Boys	Girls
2007	68,40%	31,60%
2008	71,40%	28,60%
2009	77,98%	22,02%
2010	72,88%	27,12%
2011	80,75%	19,25%



III. Asylum decisions in 2011

(source: CGRS)

1. Decisions by the Immigration Department

	January-February	March	Total
Transfer of files to CGRS	3.041	2.142	5.183
25/26 quater (Dublin)	294	155	449
13 quater	187	175	362
Renunciation, ...	129	13	142
Total	3.651	2.485	6.136

The Immigration Department decides on certain kinds of applications: applications falling under the Dublin Regulation, multiple applications, renunciations etc. Applications not who de not fall within to these categories are transferred to the CGRS.

2. Decisions by the CGRS

a. Number of decisions

	January	February	March	Total
Recognition of refugee status	167	234	9	410
Granting of subsidiary protection	53	62	75	190
Refusal to grant refugee status and subsidiary protection	598	745	912	2.255
Refusal to take an asylum application into consideration (EU nationals)	3	10	16	29
Technical refusal	44	77	90	211
Exclusion from refugee status and from subsidiary protection	1	2	1	4
Exclusion from refugee status and refusal to grant subsidiary protection		1	1	2
Refusal to grant refugee status and exclusion form subsidiary protection		2	4	6
Withdrawal of refugee status	6	2	2	10
Renunciation + closing of the case + departure IOM	19	40	23	82
Application which does not proceed to judgment: regularization under article 55	4	5	9	18
Application which does not proceed to judgment: (naturalization, death, administrative reasons)	3	2	3	8
Total	898	1.182	1.145	3.225



b. Recognition of refugee status, per nationality

(in blue and bold : countries in the top 10 of asylum applications in 2011)

Country of origin	January	February	March	Total
Afghanistan	20	17	18	55
Albania		3		3
Algeria		1		1
Angola	1			1
Armenia	1			1
Azerbaijan		2		2
Bangladesh	1			1
Belorussia	1			1
Burundi	1	2	3	6
Cameroon	1	14	10	25
Chad		1		1
China	14	7	19	40
Colombia	1		3	4
Congo (RD)	7	10	1	18
Djibouti		2		2
Eritrea	1	1		2
Gabon		1	1	2
Gambia	1		1	2
Guinea	27	47	32	106
Indefinite	6	5	5	16
India			1	1
Iran	1	3	3	7
Iraq	27	36	49	112
Ivory Coast	1			1
Jordania			1	1
Kenia		2	2	4
Kosovo	11	13	10	34
Kuwait	1			1
Libanon	1			1
Macedonia		1		1
Mauretania		1	2	3
Morocco	1	1		2
Myanmar			1	1
Niger	2	3	1	6
Nigeria		1		1
North Corea	2	4	3	9
Russia	9	5	9	23
Rwanda	2	14	11	27
Senegal	5	6	7	18
Serbia	4	9		13
Sierra Leone		4		4
Somalia	3	1	6	10
Sudan			1	1
Sri Lanka	2	4		6
Syria	8	4	12	24
Tanzania	2	2	1	5
Togo		2	4	6
Turkey	2	4	2	8
Turkmenistan		1		1
Total	167	234	219	620

c. **Granting of subsidiary protection, per nationality**
 (in blue and bold : countries in the top 10 of asylum applications in 2011)

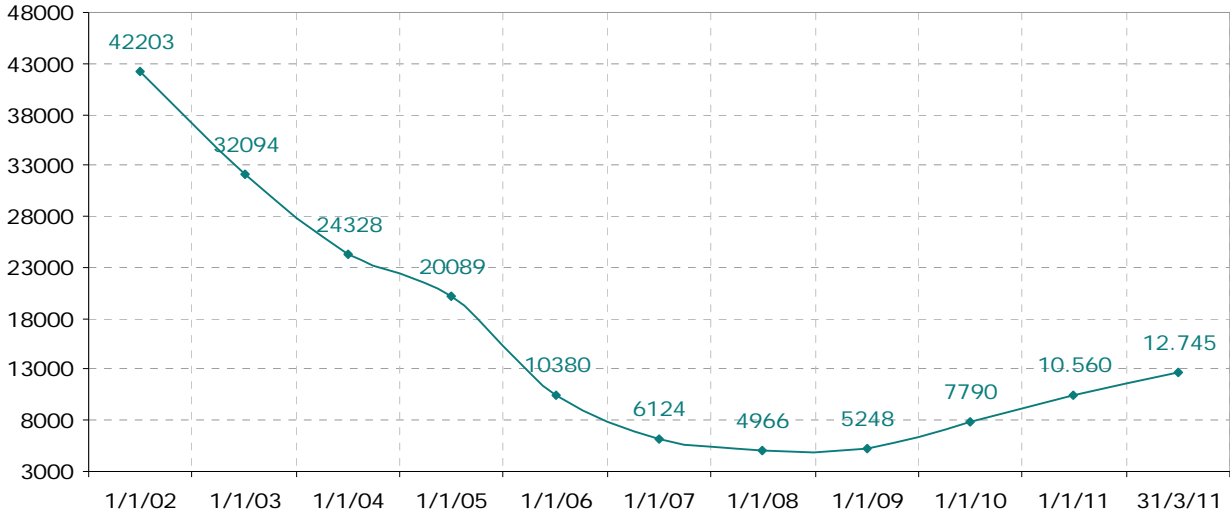
Country of origin	January	February	March	Total
Afghanistan	27	31	22	80
Burundi			1	1
Cameroon			1	1
Congo (RD)	1		2	3
Guinea	1			1
Indefinite		4	1	5
Iraq	21	22	44	87
Palestine	1			1
Somalia	2	4	1	7
Sudan			1	1
Tanzania			2	2
Yemen		1		1
Total	53	62	75	190



IV. Evolution of the backlog at the CGRS

(Backlog in assessing asylum applications at the CGRS)

Backlog per year



Backlog per month in 2010 and Jan-Mar 2011

