



**OFFICE OF THE
COMMISSIONER GENERAL FOR
REFUGEES AND STATELESS
PERSONS**

**ASYLUM
STATISTICS
August 2010**

Table of contents

1. General view of asylum applications in Belgium	<u>2</u>
Monthly number of applications in 2006-2010	
Chart of applications in 2006-2010	
Yearly number of asylum applications 1990-2010	
Monthly number of first asylum applications in 2006-2010	<u>3</u>
Chart of first asylum applications in 2006-2010	
Asylum applications – men/women in 2007-2010	
Asylum applications – unaccompanied minors - boys/girls in 2007-2010	
Top 10 countries in 2010	<u>4</u>
Top 10 of asylum applications in August 2010	
Top 10 of multiple asylum applications in 2010	
Top 5 of asylum applications by unaccompanied minors in 2010	
Asylum applications in Belgium 2007-2010 per nationality	<u>5</u>
 2. Decisions in asylum dossiers	 <u>6</u>
A. Decisions of the Immigration Department in 2010	
B. CGRS decisions in 2010	
Decisions to grant refugee status per nationality in 2010.....	<u>7</u>
Decisions to grant subsidiary protection status per nationality in 2010	<u>8</u>
Percentage of decisions to grant status (under the new asylum procedure, 2007-2010)	
 3. Evolution of the CGRS's backlog	 <u>9</u>



1. General view of the number of asylum applications in Belgium

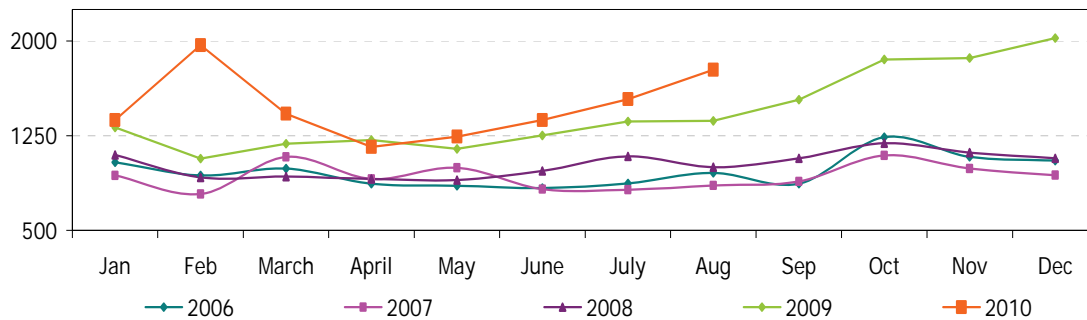
(source: Immigration Department)

Monthly number of asylum applications (2006-2010)

(including multiple applications)

	2006	2007	2008	2009	2010
January	1.038	934	1.097	1.314	1.373
February	934	787	918	1.068	1.968
March	988	1.081	926	1.185	1.424
April	870	908	907	1.215	1.160
May	854	995	899	1.145	1.243
June	834	825	971	1.251	1.375
July	872	822	1.087	1.363	1.539
August	954	856	1.000	1.368	1.773
September	870	887	1.071	1.535	
October	1.238	1.094	1.190	1.853	
November	1.082	990	1.116	1.866	
December	1.053	936	1.070	2.023	
Total	11.587	11.115	12.252	17.186	11.855

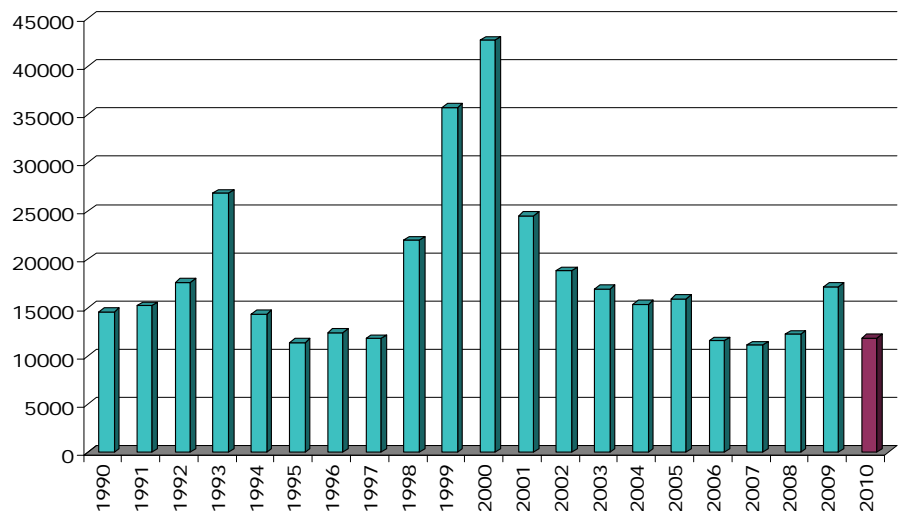
Asylum applications
2006-2010



Yearly number of asylum applications (1990-2010)

(including multiple applications)

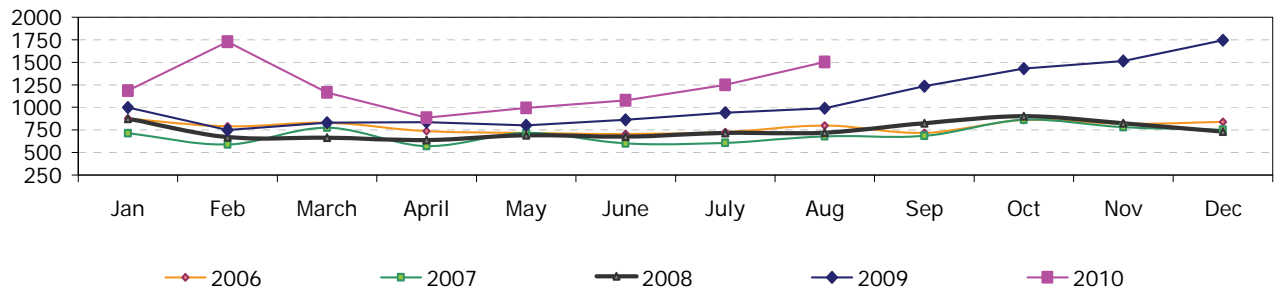
Year	Number
1990	14.580
1991	15.173
1992	17.647
1993	26.882
1994	14.353
1995	11.420
1996	12.443
1997	11.788
1998	21.965
1999	35.778
2000	42.691
2001	24.549
2002	18.805
2003	16.940
2004	15.357
2005	15.957
2006	11.587
2007	11.115
2008	12.252
2009	17.186
2010	11.855



Monthly number of first asylum applications (2006-2010)

	2006	2007	2008	2009	2010
January	875	712	873	998	1.184
February	788	588	669	749	1.726
March	828	773	663	828	1.164
April	737	570	637	836	886
May	715	715	689	799	992
June	705	599	676	862	1.077
July	724	604	716	940	1.248
August	796	677	719	991	1.502
September	716	684	824	1.235	
October	859	861	902	1.428	
November	819	780	824	1.515	
December	838	752	729	1.744	
Total	9.400	8.315	8.921	12.925	9.779

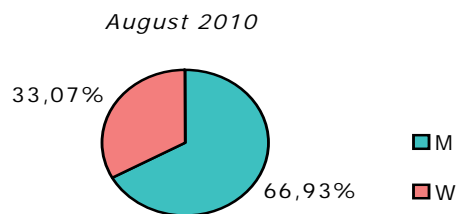
First asylum applications
2006-2010



Asylum applications – men/women (2007-2010)

(source: CGRS)

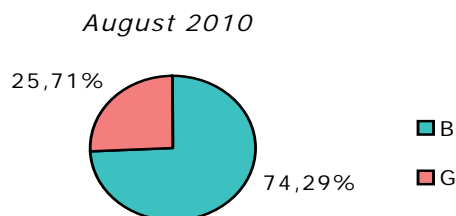
	Men	Women
2007	67,14%	32,86%
2008	69,27%	30,73%
2009	69,17%	30,83%
2010	68,57%	31,43%



Asylum applications – unaccompanied minors (< 18)

boys /girls (2007-2010) (source: ID)

	Boys	Girls
2007	68,40%	31,60%
2008	71,40%	28,60%
2009	77,98%	22,02%
2010	75,05%	24,95%



Top 10 countries in 2010

Country of origin	Jan	Feb	March	Apr	May	June	Juil	Août	Total
Iraq	105	117	131	108	136	145	174	170	1.086
Kosovo	106	143	132	113	95	131	120	179	1.019
Russia	124	102	104	97	108	127	112	136	910
Guinea	110	89	103	60	86	77	95	146	766
Afghanistan	95	108	79	70	84	81	114	109	740
Serbia	58	330	87	33	31	30	51	62	682
Macedonia	60	401	61	27	13	26	35	58	681
Armenia	81	67	48	60	95	83	92	105	631
Congo RD	65	48	75	58	56	74	58	88	522
Iran	29	46	39	33	24	34	35	19	259
Other countries	540	517	565	501	515	567	653	701	4.559
TOTAL	1.373	1.968	1.424	1.160	1.243	1.375	1.539	1.773	11.855

Top 10 asylum applications in August 2010

Country of origin	Nombre	%
1 Kosovo	179	10,1%
2 Iraq	170	9,6%
3 Guinea	146	8,2%
4 Russia	136	7,7%
5 Afghanistan	109	6,1%
6 Armenia	105	5,9%
7 Congo RD	88	5,0%
8 Serbia	62	3,5%
9 Macedonia	58	3,3%
10 Nepal	38	2,1%
Other countries	682	38,5%
Total August 2010	1.773	100%
Percentage top 10	61,5%	

Top 5 asylum applications of unaccompanied minors in 2010

Country of origin	Number	%
1 Afghanistan	127	27,5%
2 Guinea	96	20,8%
3 Iraq	33	7,2%
4 Congo RD	26	5,6%
5 Angola	15	3,3%
Other countries	164	35,6%
Total 2010	461	100%

Top 10 multiple asylum applications in 2010

Country of origin	Jan	Feb	March	April	May	June	July	August	Total
1 Afghanistan	34	38	29	27	32	33	26	38	257
3 Russia	15	29	16	36	22	43	31	37	229
2 Iraq	14	24	35	27	40	29	21	22	212
5 Kosovo	9	18	15	21	25	27	24	25	164
4 Iran	17	25	21	15	12	13	14	7	124
7 Guinea	9	5	8	4	2	6	17	15	66
6 Serbia	5	8	14	10	6	13	6	3	65
Cameroon	3	6	5	11	8	7	14	5	59
10 Syria	4	4	4	7	8	9	7	11	54
9 Mauretanie	7	5	3	9	8	5	10	2	49
Other countries	72	80	110	107	88	113	121	106	797
Total	189	242	260	274	251	298	291	271	2.076

Asylum applications in 2007, 2008, 2009 en 2010 according to nationality

Country of origin	2007	2008	2009	2010	Country of origin	2007	2008	2009	2010
Afghanistan	696	879	1.659	740	Libya	17	15	19	12
Albania	193	172	256	129	Lituania	0	1	5	1
Algeria	176	206	275	190	Macedonia	59	122	201	681
Angola	168	133	142	95	Madagascar	1	1	3	1
Argentina	0	0	0	8	Malaysia	0	0	2	0
Armenia	339	461	1.099	631	Mali	4	5	11	14
Azerbaidjan	29	53	54	42	Malta	0	0	0	2
Bangladesh	61	79	75	84	Mauretania	54	128	187	136
Belorussia	53	58	40	38	Mauritius	0	0	1	1
Benin	7	16	50	32	Mexico	0	0	1	1
Bhutan	16	34	24	12	Moldavie	19	14	29	8
Bosnia-Herzegovina	63	71	90	57	Mongolia	29	43	85	35
Brasil	2	1	2	3	Montenegro	4	7	12	6
Bulgaria	97	46	101	56	Morokko	25	36	53	32
Burkina-Faso	24	32	52	47	Myanmar	8	9	8	4
Burundi	80	106	120	75	Nepal	41	39	65	103
Cameroon	279	367	302	223	Netherlands	0	0	2	1
Canada	1	1	0	0	Niger	54	57	71	48
Cap-Verde	0	1	0	0	Nigeria	78	59	101	95
Centrafica Rep.	2	7	6	2	North Corea	6	2	4	8
Chad	13	16	16	14	Pakistan	150	150	233	182
China	135	189	329	143	Palestine	7	5	9	23
Colombia	10	4	8	11	Panama	0	0	2	0
Congo RD	716	579	670	522	Peru	0	0	1	0
Congo RP	28	30	14	12	Philippines	0	0	1	0
Croatia	7	3	16	9	Poland	9	2	6	0
Cuba	4	2	3	1	Romania	108	43	98	46
Czech Rep.	60	45	48	19	Russia	1.436	1.620	1.605	910
Djibouti	16	26	39	20	Rwanda	321	273	308	210
Dominican Rép.	1	1	9	0	Saoudi Arabia	0	0	0	1
Ecuador	2	2	0	0	Senegal	21	50	113	137
Egypt	26	24	29	23	Serbia	1.219	572	514	682
Equatorial Guinea	0	0	3	3	Sierra Leone	48	42	45	42
Eritrea	27	35	69	90	Slovakia	364	239	261	32
Estonia	0	0	0	1	Slovenia	0	0	1	0
Ethiopia	80	71	89	61	Somalia	168	163	216	146
Gabon	7	4	5	8	South Africa	0	1	1	0
Gambia	19	35	41	36	Spain	0	0	3	1
Georgia	156	222	327	192	Sri Lanka	88	148	216	94
Germany	0	0	2	0	Sudan	65	62	89	58
Ghana	18	20	29	43	Surinamese	0	0	4	3
Greece	0	0	0	1	Syria	199	281	347	239
Guatemala	0	0	7	0	Tadzjikistan	6	1	5	4
Guinea	526	661	1.052	766	Tanzania	17	49	90	42
Guinea-Bissau	2	1	3	2	Thailand	0	0	1	1
Guyana	0	0	1	0	Timor-Leste	0	2	0	0
Haiti	5	1	1	7	Togo	119	171	130	150
Hungary	23	16	143	34	Tunisia	10	6	21	12
India	53	84	123	76	Turkey	250	284	259	171
Indonesia	1	1	3	0	Turkmenistan	0	0	5	3
Iran	411	614	732	259	Uganda	18	13	23	10
Iraq	825	1.070	1.386	1.086	Ukraine	27	61	33	36
Israël	11	18	8	4	United Arabic Emirates	0	0	2	0
Italy	0	0	0	1	USA	0	0	0	2
Ivory Coast	123	91	88	96	Uzbekistan	19	15	14	13
Jamaica	1	4	1	1	Venezuela	0	1	0	0
Jordania	9	21	15	7	Vietnam	13	9	10	13
Kampuchea	0	0	1	0	Yemen	14	7	8	8
Kazakhstan	11	16	44	44	Zimbabwe	5	8	4	1
Kenya	55	55	42	42	Others	24	14	15	8
Kirghizstan	23	14	19	37	Indefinite	133	126	199	166
Kosovo	0	478	1.539	1.019	Stateless Persons	5	6	7	3
Kuwait	0	1	0	0	Refugees	0	0	1	1
Latvia	3	5	3	2					
Lebanon	138	85	95	48					
Liberia	22	23	27	12					
Total	11.115	12.252	17.186	11.855					

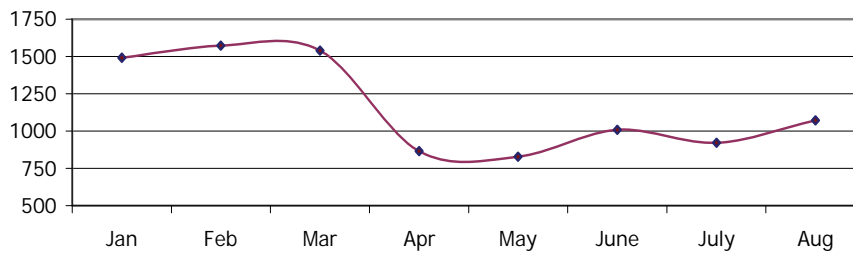
2. Decisions in asylum dossiers

A. Decisions of the Immigration Department in 2010

(source: Immigration Department)

	January-July	August	Total
Transfer of dossiers to CGRS	8.347	1.073	9.420
25/26 quater (Dublin)	1.486	100	1.586
13 quater	993	141	1.134
Renonciation, ...	1.136	77	1.213
Total	11.962	1.391	13.353

Transfer of dossiers to CGRS in 2010



B. CGRS decisions in 2010

	Jan	Feb	Mar	Apr	May	June	July	Aug	Total
Recognition of refugee status	122	177	250	102	127	161	160	163	1.262
Granting of subsidiary protection (SP)	38	70	75	48	50	42	55	50	428
Denial of refugee status and denial of SP	320	484	773	1.326	1.021	825	538	662	5.949
Asylum claims not taken into account (EU citizenship)	26	26	18	9	12	1	12	9	113
Technical denial	27	28	48	82	108	48	43	40	424
Exclusion of refugee status and exclusion of SP		2		5	3	3			13
Exclusion of refugee status and denial of SP				3	1	2		1	7
Denial of refugee status and exclusion of SP			3		2	1			6
Cancellation of refugee status			1	2			2		5
cancellation of subsidiary protection							1		1
Withdrawal of refugee status			1	2		2	6	2	13
Withdrawal of subsidiary protection	1								1
Renunciation + concluded + IOM departure	28	23	100	34	33	28	39	19	304
Not into consideration - article 55 regularisation		1	2	1	15	12	12	28	71
Not into consideration (Belgian nationality-death-adm. grounds)	1	2	1	1		3	4	3	15
Total	563	813	1.272	1.615	1.372	1.128	872	977	8.612

Decisions to grant refugee status per nationality (2010)

Country of origin	Jan	Feb	March	April	May	June	July	Aug	Total
Afghanistan	8	12	25	7	14	28	17	13	124
Albania	2		1			1		1	5
Algeria		1		1					2
Angola	1			1	1	3			6
Armenia					1				1
Belorussia				2					2
Benin	1					2			3
Burkina-Faso		3	1		1		1		6
Burundi	1	6	1	2	3	4		4	21
Cameroon	7	8	9	4	3	4	1	1	37
Ceylan		2							2
Chad			2	2					4
China	7	3	7	5	7	11	16	12	68
Colombia				1					1
Congo (Brazzaville)		1		1					2
Congo (RD)	5	7	13		5	6	8	9	53
Djibouti	1	1	1		1		1	1	6
Eritrea	3	3	2	1	1	1	1	2	14
Ethiopia	2		2			1	2	1	8
Gambia								2	2
Georgia			1			2			3
Ghana							1		1
Guinea	15	15	34	18	20	17	15	11	145
Indefinite		7	8	2	4	3	4	3	31
Iran	6	6	7		3	2	2	3	29
Iraq	22	25	23	8	16	14	15	21	144
Ivory Coast		2	6	4	1	1		1	15
Jordania			2			1			3
Kazakhstan				1				1	2
Kenya					1				1
Kirghizstan				2					2
Kosovo	5	2	22	2			4	7	42
Lebanon				1	2				3
Leberia							1	1	2
Macedonia		1			1		1	8	11
Mauretania	2	3	4	3	1	1	1	2	17
Mexico	1								1
Moldavia			1						1
Morocco		1	1						2
Myanmar		1	1						2
Niger	1	4		1		2	1		9
Nigeria			1						1
North Corea	1					1			2
Pakistan			2		1				3
Palestine			2	1					3
Russia	2	13	26	9	5	8	12	13	88
Rwanda	3	9	6	7	13	1	23	15	77
Senegal	3	6	3	2	4	6	5	9	38
Serbia	1	7	3			13	7	7	38
Somalia	2	1	7	2	2	3	2	5	24
Sri Lanka	6	7	7	3		4	3	1	31
Stateless Persons	1								1
Sudan				2		5			7
Syria	7	10	8	3	9	6	3	2	48
Tanzania		2		1	2	1		1	7
Togo	1	3		1	1	1	2	2	11
Turkey	4	5	10	2	3	8	11	3	46
Uganda	1		1					1	3
Zimbabwe					1				1
Total	122	177	250	102	127	161	160	163	1.262



Decisions to grant subsidiary protection per nationality (2010)

Country of origin	Jan	Feb	March	April	May	June	July	Aug	Total
Afghanistan	3	17	25	14	15	12	21	21	128
Congo RD		2	1				1		4
Erytrea		1	1				2	1	5
Georgia				1					1
Guinea		1		1	1	1			4
Indefinite		1					1	5	7
Iraq	29	46	42	28	33	25	24	21	248
Palestina						1	3		4
Somalia	6	1	5	2		3	1	2	20
Sudan			1	1	1		2		5
Togo				1					1
Total	38	69	75	48	50	42	55	50	427

Percentage of decisions to grant status (new asylum procedure 2007-2010)
 (refugee status or subsidiary protection status)

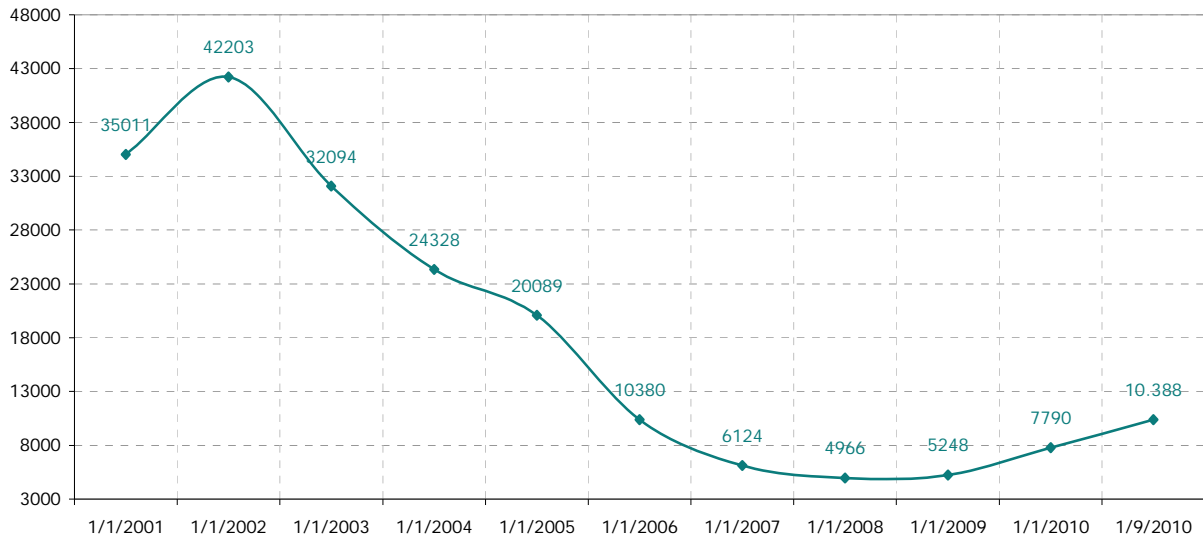
	Men	Women	Total
2007	21,1%	23,9%	22,5%
2008	27,2%	30,3%	28,8%
2009	23,9%	25,1%	24,5%
2010	21,2%	16,7%	19,0%



3. Evolution of the CGRS's backlog

(Backlog in the processing of asylum applications at the CGRS)

Backlog per year



Backlog per month 2010

