



**OFFICE OF THE
COMMISSIONER GENERAL FOR
REFUGEES AND STATELESS
PERSONS**

**ASYLUM
STATISTICS
October 2010**

Table of contents

1. General view of asylum applications in Belgium	<u>2</u>
Monthly number of applications in 2006-2010	
Chart of applications in 2006-2010	
Yearly number of asylum applications 1990-2010	
Monthly number of first asylum applications in 2006-2010	<u>3</u>
Chart of first asylum applications in 2006-2010	
Asylum applications – men/women in 2007-2010	
Asylum applications – unaccompanied minors - boys/girls in 2007-2010	
Top 10 countries in 2010	<u>4</u>
Top 10 of asylum applications in October 2010	
Top 10 of multiple asylum applications in 2010	
Top 5 of asylum applications by unaccompanied minors in 2010	
Asylum applications in Belgium 2007-2010 per nationality	<u>5</u>
 2. Decisions in asylum dossiers	 <u>6</u>
A. Decisions of the Immigration Department in 2010	
B. CGRS decisions in 2010	
Decisions to grant refugee status per nationality in 2010	<u>7</u>
Decisions to grant subsidiary protection status per nationality in 2010	<u>8</u>
Percentage of decisions to grant status (under the new asylum procedure, 2007-2010)	
 3. Evolution of the CGRS's backlog	 <u>9</u>



1. General view of the number of asylum applications in Belgium

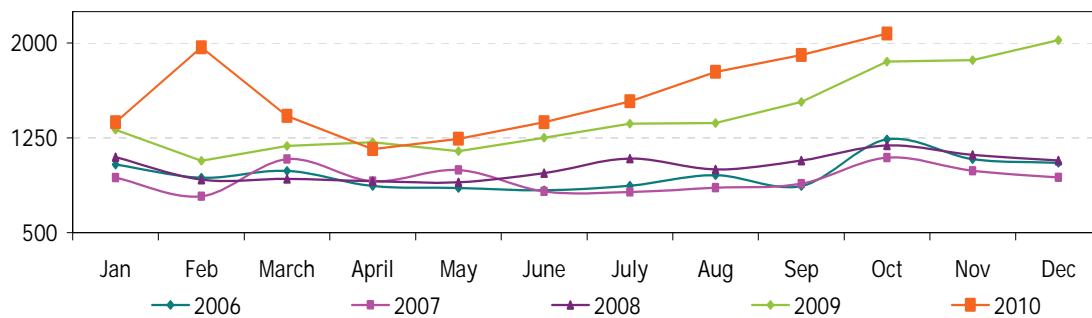
(source: Immigration Department)

Monthly number of asylum applications (2006-2010)

(including multiple applications)

	2006	2007	2008	2009	2010
January	1.038	934	1.097	1.314	1.373
February	934	787	918	1.068	1.968
March	988	1.081	926	1.185	1.424
April	870	908	907	1.215	1.160
May	854	995	899	1.145	1.243
June	834	825	971	1.251	1.375
July	872	822	1.087	1.363	1.539
August	954	856	1.000	1.368	1.773
September	870	887	1.071	1.535	1.906
October	1.238	1.094	1.190	1.853	2.076
November	1.082	990	1.116	1.866	
December	1.053	936	1.070	2.023	
Total	11.587	11.115	12.252	17.186	15.837

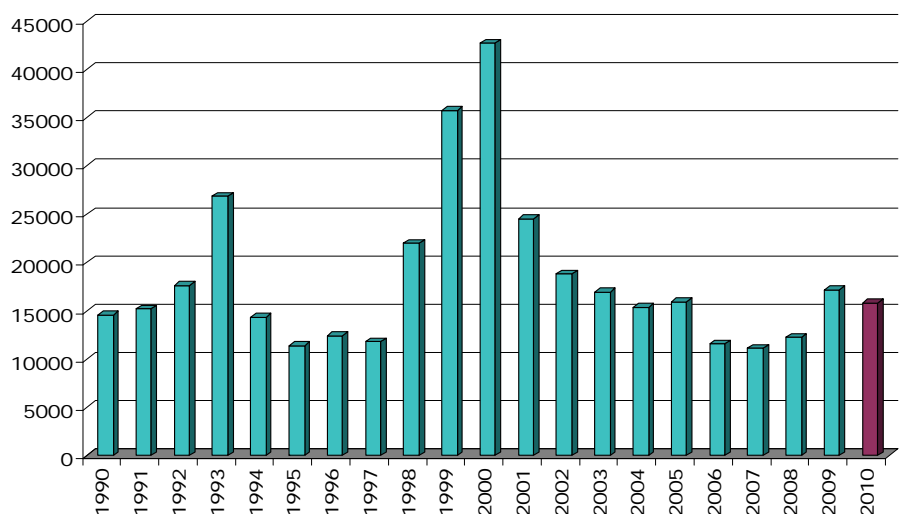
Asylum applications
2006-2010



Yearly number of asylum applications (1990-2010)

(including multiple applications)

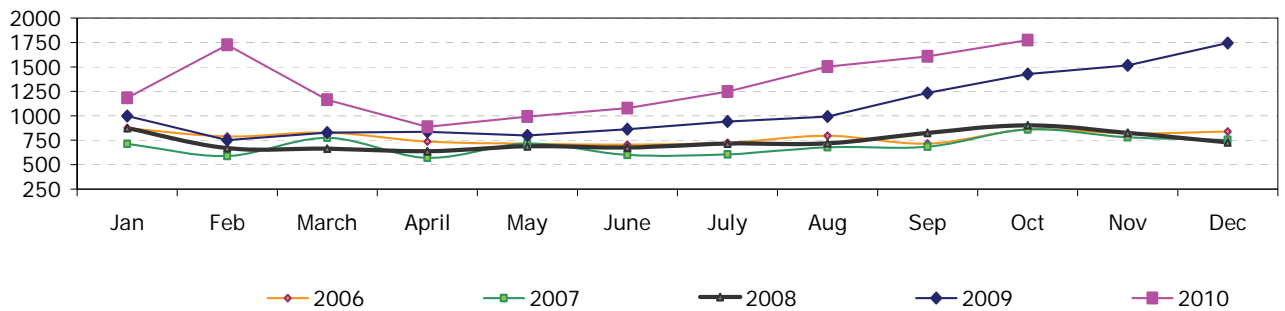
Year	Number
1990	14.580
1991	15.173
1992	17.647
1993	26.882
1994	14.353
1995	11.420
1996	12.443
1997	11.788
1998	21.965
1999	35.778
2000	42.691
2001	24.549
2002	18.805
2003	16.940
2004	15.357
2005	15.957
2006	11.587
2007	11.115
2008	12.252
2009	17.186
2010	15.837



Monthly number of first asylum applications (2006-2010)

	2006	2007	2008	2009	2010
January	875	712	873	998	1.184
February	788	588	669	749	1.726
March	828	773	663	828	1.164
April	737	570	637	836	886
May	715	715	689	799	992
June	705	599	676	862	1.077
July	724	604	716	940	1.248
August	796	677	719	991	1.502
September	716	684	824	1.235	1.608
October	859	861	902	1.428	1.773
November	819	780	824	1.515	
December	838	752	729	1.744	
Total	9.400	8.315	8.921	12.925	13.160

First asylum applications
2006-2010

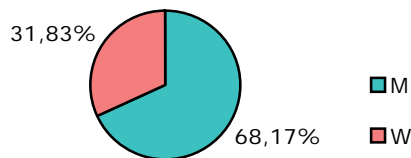


Asylum applications – men/women (2007-2010)

(source: CGRS)

	Men	Women
2007	67,14%	32,86%
2008	69,27%	30,73%
2009	69,17%	30,83%
2010	68,31%	31,69%

October 2010

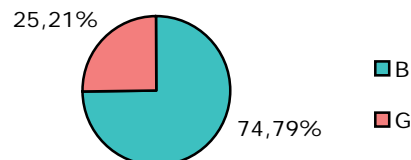


Asylum applications – unaccompanied minors (< 18)

boys /girls (2007-2010) (source: ID)

	Boys	Girls
2007	68,40%	31,60%
2008	71,40%	28,60%
2009	77,98%	22,02%
2010	72,70%	27,30%

October 2010



Top 10 countries in 2010

Country of origin	Jan	Feb	March	Apr	May	June	Juil	Août	Sep	Oct	Total
Kosovo	106	143	132	113	95	131	120	179	196	203	1.418
Iraq	105	117	131	108	136	145	174	170	148	166	1.400
Russia	124	102	104	97	108	127	112	136	157	166	1.233
Guinea	110	89	103	60	86	77	95	146	144	143	1.053
Afghanistan	95	108	79	70	84	81	114	109	111	141	992
Serbia	58	330	87	33	31	30	51	62	129	166	977
Macedonia	60	401	61	27	13	26	35	58	82	145	908
Armenia	81	67	48	60	95	83	92	105	107	108	846
Congo RD	65	48	75	58	56	74	58	88	60	56	638
Iran	29	46	39	33	24	34	35	19	31	39	329
Other countries	540	517	565	501	515	567	653	701	741	743	6.043
TOTAL	1.373	1.968	1.424	1.160	1.243	1.375	1.539	1.773	1.906	2.076	15.837

Top 10 asylum applications in October 2010

Country of origin	Nombre	%
1 Kosovo	203	9,8%
2 Iraq	166	8,0%
Russia	166	8,0%
Serbia	166	8,0%
3 Macedonia	145	7,0%
4 Guinea	143	6,9%
5 Afghanistan	141	6,8%
6 Armenia	108	5,2%
7 Congo RD	56	2,7%
8 Somalia	51	2,5%
9 Syria	40	1,9%
10 Cameroon	39	1,9%
Other countries	652	31,4%
Total October 2010	2.076	100%
Percentage top 10	68,6%	

Top 5 asylum applications of unaccompanied minors in 2010

Country of origin	Number	%
1 Guinea	176	25,7%
2 Afghanistan	163	23,8%
3 Congo RD	46	6,7%
4 Iraq	40	5,8%
5 Somalia	25	3,6%
Other countries	235	34,3%
Total 2010	685	100%

Top 10 multiple asylum applications in 2010

Country of origin	Jan	Feb	March	April	May	June	July	Aug	Sept	Oct	Total
1 Afghanistan	34	38	29	27	32	33	26	38	38	52	347
2 Russia	15	29	16	36	22	43	31	37	37	51	317
3 Iraq	14	24	35	27	40	29	21	22	17	22	251
4 Kosovo	9	18	15	21	25	27	24	25	24	21	209
5 Iran	17	25	21	15	12	13	14	7	8	16	148
6 Serbia	5	8	14	10	6	13	6	3	25	21	111
7 Guinea	9	5	8	4	2	6	17	15	15	11	92
8 Macedonia	5	6	3	4	1	10	3	6	27	10	75
9 Syria	4	4	4	7	8	9	7	11	7	8	69
10 Cameroon	3	6	5	11	8	7	14	5	4	2	65
Other countries	74	79	110	112	95	108	128	102	96	89	993
Total	189	242	260	274	251	298	291	271	298	303	2.677



Asylum applications in 2007, 2008, 2009 en 2010 according to nationality

Country of origin	2007	2008	2009	2010	Country of origin	2007	2008	2009	2010
Afghanistan	696	879	1.659	992	Libya	17	15	19	16
Albania	193	172	256	175	Lituania	0	1	5	1
Algeria	176	206	275	230	Macedonia	59	122	201	908
Angola	168	133	142	121	Madagascar	1	1	3	2
Argentina	0	0	0	8	Malaysia	0	0	2	0
Armenia	339	461	1.099	846	Mali	4	5	11	20
Azerbaidjan	29	53	54	51	Malta	0	0	0	2
Bangladesh	61	79	75	131	Mauretania	54	128	187	168
Belorussia	53	58	40	46	Mauritius	0	0	1	2
Benin	7	16	50	36	Mexico	0	0	1	1
Bhutan	16	34	24	15	Moldavie	19	14	29	12
Bosnia-Herzegovina	63	71	90	82	Mongolia	29	43	85	49
Brasil	2	1	2	3	Montenegro	4	7	12	10
Bulgaria	97	46	101	69	Morokko	25	36	53	40
Burkina-Faso	24	32	52	61	Myanmar	8	9	8	14
Burundi	80	106	120	110	Nepal	41	39	65	157
Cameroon	279	367	302	289	Netherlands	0	0	2	1
Canada	1	1	0	0	Niger	54	57	71	59
Cap-Verde	0	1	0	0	Nigeria	78	59	101	121
Centrafica Rep.	2	7	6	4	North Corea	6	2	4	11
Chad	13	16	16	17	Pakistan	150	150	233	271
China	135	189	329	182	Palestine	7	5	9	30
Colombia	10	4	8	11	Panama	0	0	2	0
Congo RD	716	579	670	638	Peru	0	0	1	0
Congo RP	28	30	14	19	Philippines	0	0	1	0
Croatia	7	3	16	10	Poland	9	2	6	0
Cuba	4	2	3	2	Romania	108	43	98	53
Czech Rep.	60	45	48	20	Russia	1.436	1.620	1.605	1.233
Djibouti	16	26	39	27	Rwanda	321	273	308	263
Dominican Rép.	1	1	9	0	Saoudi Arabia	0	0	0	1
Ecuador	2	2	0	0	Senegal	21	50	113	203
Egypt	26	24	29	27	Serbia	1.219	572	514	977
Equatorial Guinea	0	0	3	3	Sierra Leone	48	42	45	54
Eritrea	27	35	69	100	Slovakia	364	239	261	43
Estonia	0	0	0	1	Slovenia	0	0	1	0
Ethiopia	80	71	89	67	Somalia	168	163	216	227
Gabon	7	4	5	10	South Africa	0	1	1	0
Gambia	19	35	41	46	Spain	0	0	3	1
Georgia	156	222	327	264	Sri Lanka	88	148	216	111
Germany	0	0	2	0	Sudan	65	62	89	78
Ghana	18	20	29	55	Surinamese	0	0	4	4
Greece	0	0	0	1	Syria	199	281	347	310
Guatemala	0	0	7	1	Tadzjikistan	6	1	5	5
Guinea	526	661	1.052	1.053	Tanzania	17	49	90	68
Guinea-Bissau	2	1	3	4	Thailand	0	0	1	1
Guyana	0	0	1	0	Timor-Leste	0	2	0	0
Haiti	5	1	1	8	Togo	119	171	130	198
Hungary	23	16	143	36	Tunisia	10	6	21	16
India	53	84	123	106	Turkey	250	284	259	232
Indonesia	1	1	3	0	Turkmenistan	0	0	5	3
Iran	411	614	732	329	Uganda	18	13	23	12
Iraq	825	1.070	1.386	1.400	Ukraine	27	61	33	46
Israël	11	18	8	5	United Arabic Emirates	0	0	2	0
Italy	0	0	0	1	USA	0	0	0	2
Ivory Coast	123	91	88	132	Uzbekistan	19	15	14	17
Jamaica	1	4	1	1	Venezuela	0	1	0	0
Jordania	9	21	15	9	Vietnam	13	9	10	15
Kampuchea	0	0	1	0	Yemen	14	7	8	9
Kazakhstan	11	16	44	64	Zimbabwe	5	8	4	2
Kenya	55	55	42	52	Others	24	14	15	8
Kirghizstan	23	14	19	72	Indefinite	133	126	199	205
Kosovo	0	478	1.539	1.418	Stateless Persons	5	6	7	5
Kuwait	0	1	0	1	Refugees	0	0	1	1
Latvia	3	5	3	2	Total	11.115	12.252	17.186	15.837
Lebanon	138	85	95	59					
Liberia	22	23	27	17					

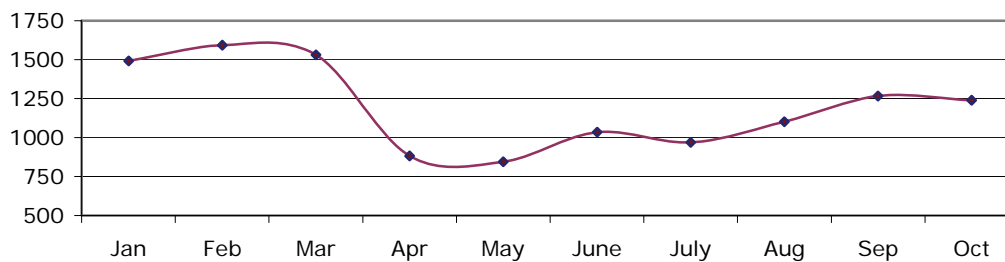
2. Decisions in asylum dossiers

A. Decisions of the Immigration Department in 2010

(source: Immigration Department)

	Jan-Sept	October	Total
Transfer of dossiers to CGRS	10.714	1.239	11.953
25/26 quater (Dublin)	1.722	123	1.845
13 quater	1.220	97	1.317
Renonciation, ...	1.522	13	1.535
Total	15.178	1.472	16.650

Transfer of dossiers to CGRS in 2010



B. CGRS decisions in 2010

	Jan	Feb	Mar	Apr	May	June	July	Aug	Sept	Oct	Total
Recognition of refugee status	122	177	250	102	127	161	160	163	208	204	1.674
Granting of subsidiary protection (SP)	38	70	75	48	50	42	55	50	76	99	603
Denial of refugee status and denial of SP	320	484	773	1.326	1.021	825	538	664	642	836	7.429
Asylum claims not taken into account (EU citizenship)	26	26	18	9	12	1	12	9	18	14	145
Technical denial	27	28	48	82	108	48	43	40	33	39	496
Exclusion of refugee status and exclusion of SP		2		5	3	3			2		15
Exclusion of refugee status and denial of SP				3	1	2		1		1	7
Denial of refugee status and exclusion of SP			3		2	1				1	7
Cancellation of refugee status			1	2			2			1	6
cancellation of subsidiary protection							1				1
Withdrawal of refugee status			1	2		2	6	2	1	6	20
Withdrawal of subsidiary protection	1										1
Renunciation + concluded + IOM departure	28	23	100	34	33	28	39	19	27	15	346
Not into consideration - article 55 regularisation		1	2	1	15	12	12	28	14	11	96
Not into consideration (Belgian nationality-death-adm. grounds)	1	2	1	1		3	4	3	1		16
Total	563	813	1.272	1.615	1.372	1.128	872	979	1.022	1.227	10.862

Decisions to grant refugee status per nationality (2010)

Country of origin	Jan	Feb	March	April	May	June	July	Aug	Sept	Oct	Total
Afghanistan	8	12	25	7	14	28	17	13	21	29	174
Albania	2		1			1		1	1	1	7
Algeria		1		1							2
Angola	1			1	1	3				1	7
Armenia					1				3		4
Belorussia				2							2
Benin	1					2					3
Burkina-Faso		3	1		1		1				6
Burundi	1	6	1	2	3	4		4	2	6	29
Cameroon	7	8	9	4	3	4	1	1	4	2	43
Ceylan		2									2
Chad			2	2					1		5
China	7	3	7	5	7	11	16	12	22	11	101
Colombia				1							1
Congo (Brazzaville)		1		1							2
Congo (RD)	5	7	13		5	6	8	9	4	6	63
Djibouti	1	1	1		1		1	1	4	2	12
Eritrea	3	3	2	1	1	1	1	2	8	2	24
Ethiopia	2		2			1	2	1	1		9
Gambia								2			2
Georgia			1			2			1		4
Ghana							1				1
Guinea	15	15	34	18	20	17	15	11	27	37	209
Guinea-Bissau									1		1
Indefinite		7	8	2	4	3	4	2	4	5	39
Iran	6	6	7		3	2	2	3	6	4	39
Iraq	22	25	23	8	16	14	15	21	36	29	209
Israel								1			1
Ivory Coast		2	6	4	1	1		1			15
Jordania			2			1					3
Kazakhstan				1				1			2
Kenya					1				1		2
Kirghizstan				2							2
Kosovo	5	2	22	2			4	7	8	16	66
Lebanon				1	2					1	4
Leberia							1	1		1	3
Lybia										1	1
Macedonia		1			1		1	8	1	1	13
Mali									1		1
Mauretania	2	3	4	3	1	1	1	2	1	2	20
Mexico	1										1
Moldavia			1								1
Montenegro										1	1
Morocco		1	1							1	3
Myanmar		1	1							1	3
Niger	1	4		1		2	1		1		10
Nigeria			1								1
North Corea	1					1					2
Pakistan			2		1					1	4
Palestine			2	1							3
Russia	2	13	26	9	5	8	12	13	9	2	99
Rwanda	3	9	6	7	13	1	23	15	5	6	88
Senegal	3	6	3	2	4	6	5	9	1	5	44
Serbia	1	7	3			13	7	7	13	9	60
Somalia	2	1	7	2	2	3	2	5	2	4	30
Sri Lanka	6	7	7	3		4	3	1	1	2	34
Stateless Persons	1										1
Sudan				2		5			2	2	11
Syria	7	10	8	3	9	6	3	2	5	7	60
Tanzania		2		1	2	1		1	3		10
Togo	1	3		1	1	1	2	2	2	2	15
Turkey	4	5	10	2	3	8	11	3	6	3	55
Uganda	1		1					1		1	4
Zimbabwe					1						1
Total	122	177	250	102	127	161	160	163	208	204	1.674

Decisions to grant subsidiary protection per nationality (2010)

Country of origin	Jan	Feb	March	April	May	June	July	Aug	Sep	Oct	Total
Afghanistan	3	17	25	14	15	12	21	21	36	39	203
Congo RD		2	1				1			2	6
Erytrea		1	1				2	1		1	6
Georgia				1							1
Guinea		1		1	1	1			3	1	8
Indefinite		1					1	5	1	1	9
Iraq	29	46	42	28	33	25	24	21	34	48	330
Palestina						1	3				4
Somalia	6	1	5	2		3	1	2	2	5	27
Sudan			1	1	1		2			1	6
Togo				1						1	2
Total	38	69	75	48	50	42	55	50	76	99	602

Percentage of decisions to grant status (new asylum procedure 2007-2010)
 (refugee status or subsidiary protection status)

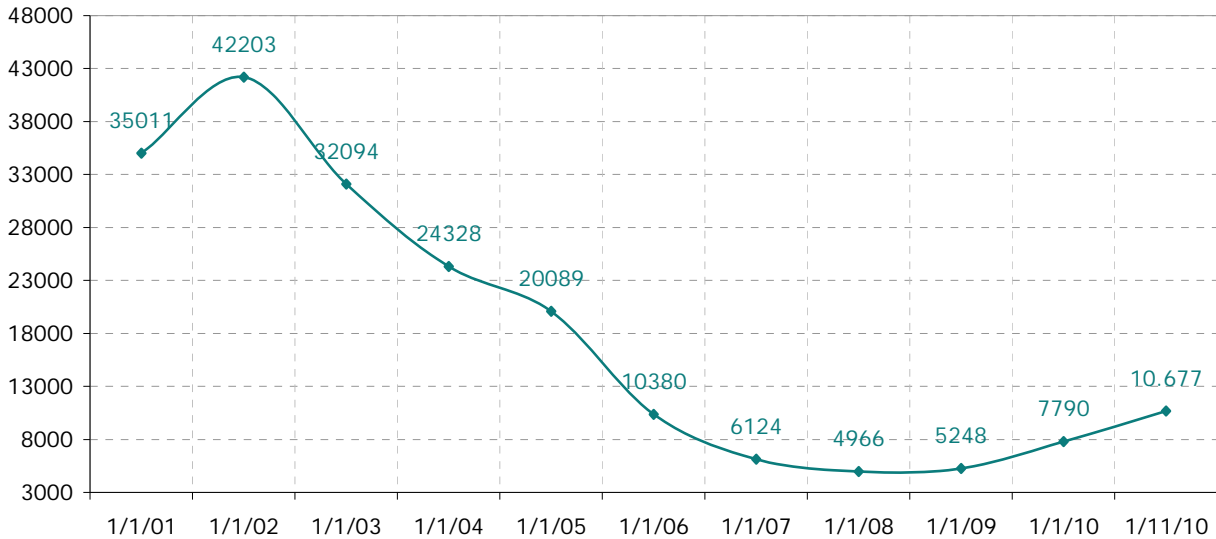
	Men	Women	Total
2007	21,1%	23,9%	22,5%
2008	27,2%	30,3%	28,8%
2009	23,9%	25,1%	24,5%
2010	22,7%	17,7%	20,2%



3. Evolution of the CGRS's backlog

(Backlog in the processing of asylum applications at the CGRS)

Backlog per year



Backlog per month 2010

