



**OFFICE OF THE  
COMMISSIONER GENERAL FOR  
REFUGEES AND STATELESS  
PERSONS**

**ASYLUM  
STATISTICS  
September 2010**

## Table of contents

<b>1. General view of asylum applications in Belgium</b> .....	<b>2</b>
Monthly number of applications in 2006-2010 Chart of applications in 2006-2010 Yearly number of asylum applications 1990-2010	
Monthly number of first asylum applications in 2006-2010 .....	<b>3</b>
Chart of first asylum applications in 2006-2010 Asylum applications – men/women in 2007-2010 Asylum applications – unaccompanied minors - boys/girls in 2007-2010	
Top 10 countries in 2010 .....	<b>4</b>
Top 10 of asylum applications in September 2010 Top 10 of multiple asylum applications in 2010 Top 5 of asylum applications by unaccompanied minors in 2010	
Asylum applications in Belgium 2007-2010 per nationality .....	<b>5</b>
<b>2. Decisions in asylum dossiers</b> .....	<b>6</b>
A. Decisions of the Immigration Department in 2010	
B. CGRS decisions in 2010	
Decisions to grant refugee status per nationality in 2010 .....	<b>7</b>
Decisions to grant subsidiary protection status per nationality in 2010 .....	<b>8</b>
Percentage of decisions to grant status (under the new asylum procedure, 2007-2010)	
<b>3. Evolution of the CGRS's backlog</b> .....	<b>9</b>



## 1. General view of the number of asylum applications in Belgium

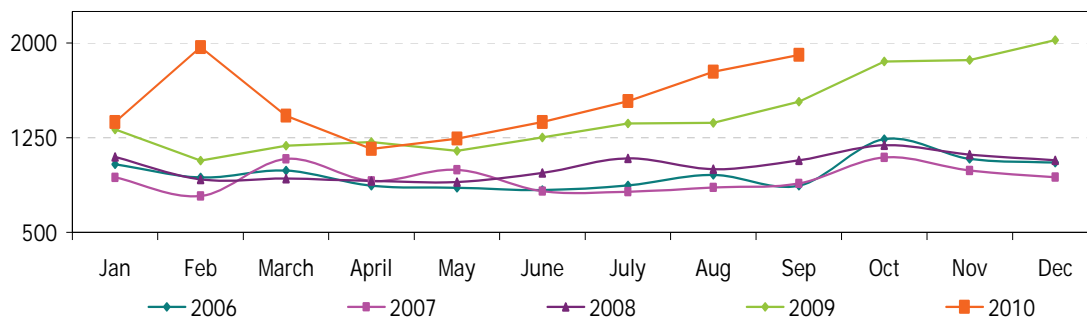
(source: Immigration Department)

### Monthly number of asylum applications (2006-2010)

(including multiple applications)

	2006	2007	2008	2009	2010
January	1.038	934	1.097	1.314	1.373
February	934	787	918	1.068	1.968
March	988	1.081	926	1.185	1.424
April	870	908	907	1.215	1.160
May	854	995	899	1.145	1.243
June	834	825	971	1.251	1.375
July	872	822	1.087	1.363	1.539
August	954	856	1.000	1.368	1.773
September	870	887	1.071	1.535	1.905
October	1.238	1.094	1.190	1.853	
November	1.082	990	1.116	1.866	
December	1.053	936	1.070	2.023	
<b>Total</b>	<b>11.587</b>	<b>11.115</b>	<b>12.252</b>	<b>17.186</b>	<b>13.760</b>

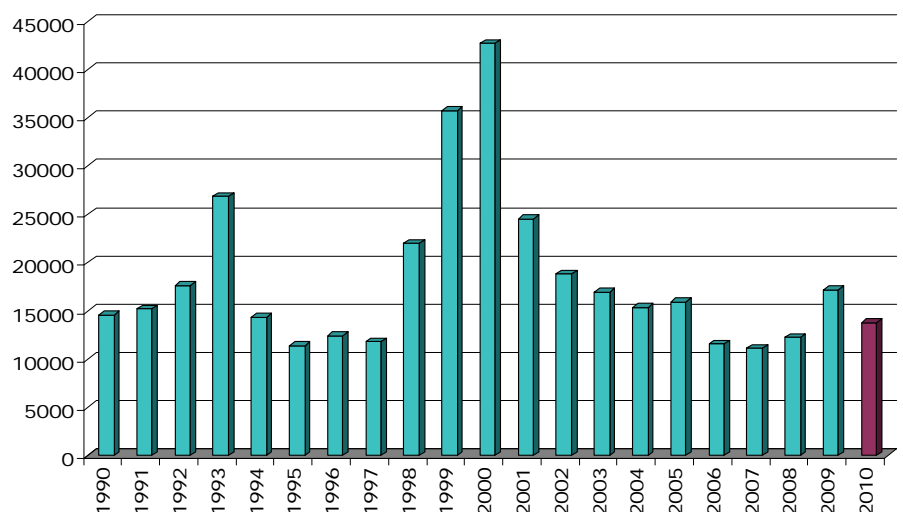
Asylum applications  
2006-2010



### Yearly number of asylum applications (1990-2010)

(including multiple applications)

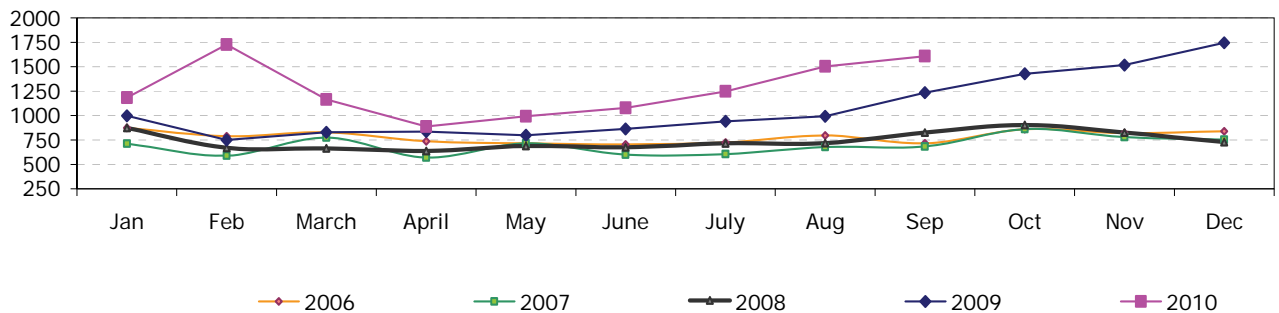
Year	Number
1990	14.580
1991	15.173
1992	17.647
1993	26.882
1994	14.353
1995	11.420
1996	12.443
1997	11.788
1998	21.965
1999	35.778
2000	42.691
2001	24.549
2002	18.805
2003	16.940
2004	15.357
2005	15.957
2006	11.587
2007	11.115
2008	12.252
2009	17.186
<b>2010</b>	<b>13.760</b>



### Monthly number of first asylum applications (2006-2010)

	2006	2007	2008	2009	2010
January	875	712	873	998	1.184
February	788	588	669	749	1.726
March	828	773	663	828	1.164
April	737	570	637	836	886
May	715	715	689	799	992
June	705	599	676	862	1.077
July	724	604	716	940	1.248
August	796	677	719	991	1.502
September	716	684	824	1.235	1.607
October	859	861	902	1.428	
November	819	780	824	1.515	
December	838	752	729	1.744	
<b>Total</b>	<b>9.400</b>	<b>8.315</b>	<b>8.921</b>	<b>12.925</b>	<b>11.386</b>

First asylum applications  
2006-2010

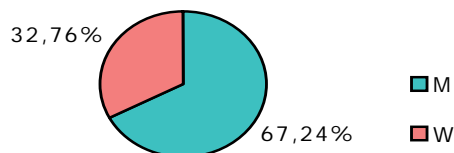


### Asylum applications – men/women (2007-2010)

(source: CGRS)

	Men	Women
2007	67,14%	32,86%
2008	69,27%	30,73%
2009	69,17%	30,83%
2010	68,32%	31,68%

September 2010

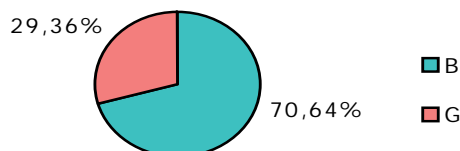


### Asylum applications – unaccompanied minors (< 18)

boys /girls (2007-2010) (source: ID)

	Boys	Girls
2007	68,40%	31,60%
2008	71,40%	28,60%
2009	77,98%	22,02%
2010	73,08%	26,92%

September 2010



### Top 10 countries in 2010

Country of origin	Jan	Feb	March	Apr	May	June	Juil	Août	Sep	Total
Iraq	105	117	131	108	136	145	174	170	148	1.234
Kosovo	106	143	132	113	95	131	120	179	196	1.215
Russia	124	102	104	97	108	127	112	136	157	1.067
Guinea	110	89	103	60	86	77	95	146	144	910
Afghanistan	95	108	79	70	84	81	114	109	111	851
Serbia	58	330	87	33	31	30	51	62	129	811
Macedonia	60	401	61	27	13	26	35	58	82	763
Armenia	81	67	48	60	95	83	92	105	107	738
Congo RD	65	48	75	58	56	74	58	88	60	582
Iran	29	46	39	33	24	34	35	19	31	290
Other countries	540	517	565	501	515	567	653	701	740	5.299
<b>TOTAL</b>	<b>1.373</b>	<b>1.968</b>	<b>1.424</b>	<b>1.160</b>	<b>1.243</b>	<b>1.375</b>	<b>1.539</b>	<b>1.773</b>	<b>1.905</b>	<b>13.760</b>

### Top 10 asylum applications in September 2010

Country of origin	Nombre	%
1 Kosovo	196	10,3%
2 Russia	157	8,2%
3 Iraq	148	7,8%
4 Guinea	144	7,6%
5 Serbia	129	6,8%
6 Afghanistan	111	5,8%
7 Armenia	107	5,6%
8 Macedonia	82	4,3%
9 Congo RD	60	3,1%
10 Pakistan	56	2,9%
Other countries	715	37,5%
<b>Total September 2010</b>	<b>1.905</b>	<b>100%</b>
<b>Percentage top 10</b>	<b>62,5%</b>	

### Top 5 asylum applications of unaccompanied minors in 2010

Country of origin	Number	%
1 Guinea	148	25,2%
2 Afghanistan	138	23,5%
3 Congo RD	43	7,3%
4 Iraq	35	6,0%
5 Russia	18	3,1%
Other countries	205	34,9%
<b>Total 2010</b>	<b>587</b>	<b>100%</b>

### Top 10 multiple asylum applications in 2010

Country of origin	Jan	Feb	March	April	May	June	July	Aug	Sept	Total
1 Afghanistan	34	38	29	27	32	33	26	38	38	<b>295</b>
2 Russia	15	29	16	36	22	43	31	37	37	<b>266</b>
3 Iraq	14	24	35	27	40	29	21	22	17	<b>229</b>
4 Kosovo	9	18	15	21	25	27	24	25	24	<b>188</b>
5 Iran	17	25	21	15	12	13	14	7	8	<b>132</b>
6 Serbia	5	8	14	10	6	13	6	3	25	<b>90</b>
7 Guinea	9	5	8	4	2	6	17	15	15	<b>81</b>
8 Cameroon	3	6	5	11	8	7	14	5	4	<b>63</b>
9 Syria	4	4	4	7	8	9	7	11	7	<b>61</b>
10 Mauretanie	7	5	3	9	8	5	10	2	6	<b>55</b>
Other countries	72	80	110	107	88	113	121	106	117	<b>914</b>
<b>Total</b>	<b>189</b>	<b>242</b>	<b>260</b>	<b>274</b>	<b>251</b>	<b>298</b>	<b>291</b>	<b>271</b>	<b>298</b>	<b>2.374</b>

### Asylum applications in 2007, 2008, 2009 en 2010 according to nationality

Country of origin	2007	2008	2009	2010	Country of origin	2007	2008	2009	2010
Afghanistan	696	879	1.659	851	Libya	17	15	19	14
Albania	193	172	256	155	Lituania	0	1	5	1
Algeria	176	206	275	209	Macedonia	59	122	201	763
Angola	168	133	142	109	Madagascar	1	1	3	1
Argentina	0	0	0	8	Malaysia	0	0	2	0
Armenia	339	461	1.099	738	Mali	4	5	11	16
Azerbaidjan	29	53	54	50	Malta	0	0	0	2
Bangladesh	61	79	75	114	Mauretania	54	128	187	151
Belorussia	53	58	40	43	Mauritius	0	0	1	1
Benin	7	16	50	33	Mexico	0	0	1	1
Bhutan	16	34	24	15	Moldavie	19	14	29	8
Bosnia-Herzegovina	63	71	90	67	Mongolia	29	43	85	43
Brasil	2	1	2	3	Montenegro	4	7	12	6
Bulgaria	97	46	101	64	Morokko	25	36	53	37
Burkina-Faso	24	32	52	55	Myanmar	8	9	8	6
Burundi	80	106	120	93	Nepal	41	39	65	125
Cameroon	279	367	302	250	Netherlands	0	0	2	1
Canada	1	1	0	0	Niger	54	57	71	51
Cap-Verde	0	1	0	0	Nigeria	78	59	101	109
Centrafica Rep.	2	7	6	2	North Corea	6	2	4	8
Chad	13	16	16	15	Pakistan	150	150	233	238
China	135	189	329	163	Palestine	7	5	9	27
Colombia	10	4	8	11	Panama	0	0	2	0
Congo RD	716	579	670	582	Peru	0	0	1	0
Congo RP	28	30	14	16	Philippines	0	0	1	0
Croatia	7	3	16	9	Poland	9	2	6	0
Cuba	4	2	3	1	Romania	108	43	98	47
Czech Rep.	60	45	48	20	Russia	1.436	1.620	1.605	1.067
Djibouti	16	26	39	25	Rwanda	321	273	308	239
Dominican Rép.	1	1	9	0	Saoudi Arabia	0	0	0	1
Ecuador	2	2	0	0	Senegal	21	50	113	167
Egypt	26	24	29	25	Serbia	1.219	572	514	811
Equatorial Guinea	0	0	3	3	Sierra Leone	48	42	45	49
Eritrea	27	35	69	94	Slovakia	364	239	261	38
Estonia	0	0	0	1	Slovenia	0	0	1	0
Ethiopia	80	71	89	64	Somalia	168	163	216	176
Gabon	7	4	5	10	South Africa	0	1	1	0
Gambia	19	35	41	40	Spain	0	0	3	1
Georgia	156	222	327	232	Sri Lanka	88	148	216	106
Germany	0	0	2	0	Sudan	65	62	89	66
Ghana	18	20	29	50	Surinamese	0	0	4	3
Greece	0	0	0	1	Syria	199	281	347	270
Guatemala	0	0	7	1	Tadzjikistan	6	1	5	5
Guinea	526	661	1.052	910	Tanzania	17	49	90	48
Guinea-Bissau	2	1	3	3	Thailand	0	0	1	1
Guyana	0	0	1	0	Timor-Leste	0	2	0	0
Haiti	5	1	1	7	Togo	119	171	130	180
Hungary	23	16	143	36	Tunisia	10	6	21	15
India	53	84	123	91	Turkey	250	284	259	204
Indonesia	1	1	3	0	Turkmenistan	0	0	5	3
Iran	411	614	732	290	Uganda	18	13	23	10
Iraq	825	1.070	1.386	1.234	Ukraine	27	61	33	41
Israël	11	18	8	5	United Arabic Emirates	0	0	2	0
Italy	0	0	0	1	USA	0	0	0	2
Ivory Coast	123	91	88	119	Uzbekistan	19	15	14	14
Jamaica	1	4	1	1	Venezuela	0	1	0	0
Jordania	9	21	15	7	Vietnam	13	9	10	13
Kampuchea	0	0	1	0	Yemen	14	7	8	9
Kazakhstan	11	16	44	54	Zimbabwe	5	8	4	1
Kenya	55	55	42	49	Others	24	14	15	8
Kirghizstan	23	14	19	51	Indefinite	133	126	199	187
Kosovo	0	478	1.539	1.215	Stateless Persons	5	6	7	4
Kuwait	0	1	0	1	Refugees	0	0	1	1
Latvia	3	5	3	2					
Lebanon	138	85	95	52					
Liberia	22	23	27	14					
<b>Total</b>	<b>11.115</b>	<b>12.252</b>	<b>17.186</b>	<b>13.760</b>					

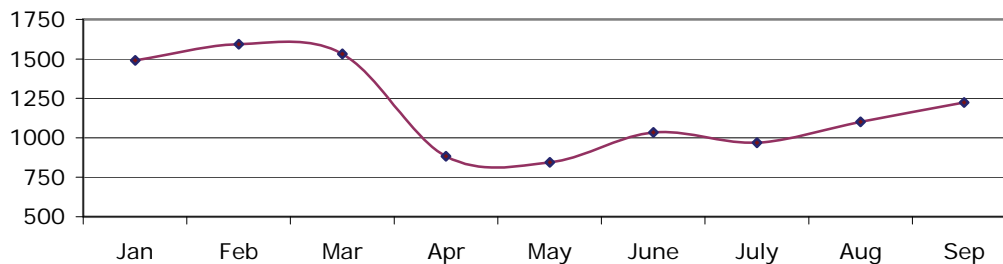
## 2. Decisions in asylum dossiers

### A. *Decisions of the Immigration Department in 2010*

(source: Immigration Department)

	January-August	September	Total
Transfer of dossiers to CGRS	9.448	1.224	10.672
25/26 quater (Dublin)	1.601	99	1.700
13 quater	1.138	80	1.218
Renonciation, ...	1.354	11	1.365
<b>Total</b>	<b>13.541</b>	<b>1.414</b>	<b>14.955</b>

Transfer of dossiers to CGRS in 2010



### B. *CGRS decisions in 2010*

	Jan	Feb	Mar	Apr	May	June	July	Aug	Sept	Total
Recognition of refugee status	122	177	250	102	127	161	160	163	208	1.470
Granting of subsidiary protection (SP)	38	70	75	48	50	42	55	50	76	504
Denial of refugee status and denial of SP	320	484	773	1.326	1.021	825	538	664	642	6.593
Asylum claims not taken into account (EU citizenship)	26	26	18	9	12	1	12	9	18	131
Technical denial	27	28	48	82	108	48	43	40	33	457
Exclusion of refugee status and exclusion of SP		2		5	3	3			2	15
Exclusion of refugee status and denial of SP				3	1	2		1		7
Denial of refugee status and exclusion of SP			3		2	1				6
Cancellation of refugee status			1	2			2			5
cancellation of subsidiary protection							1			1
Withdrawal of refugee status			1	2		2	6	2	1	14
Withdrawal of subsidiary protection	1									1
Renunciation + concluded + IOM departure	28	23	100	34	33	28	39	19	27	331
Not into consideration - article 55 regularisation		1	2	1	15	12	12	28	14	85
Not into consideration (Belgian nationality-death-adm. grounds)	1	2	1	1		3	4	3		15
<b>Total</b>	<b>563</b>	<b>813</b>	<b>1.272</b>	<b>1.615</b>	<b>1.372</b>	<b>1.128</b>	<b>872</b>	<b>979</b>	<b>1.021</b>	<b>9.635</b>

**Decisions to grant refugee status per nationality (2010)**

Country of origin	Jan	Feb	March	April	May	June	July	Aug	Sept	Total
Afghanistan	8	12	25	7	14	28	17	13	21	145
Albania	2		1			1		1	1	6
Algeria		1		1						2
Angola	1			1	1	3				6
Armenia					1				3	4
Belorussia				2						2
Benin	1					2				3
Burkina-Faso		3	1		1		1			6
Burundi	1	6	1	2	3	4		4	2	23
Cameroon	7	8	9	4	3	4	1	1	4	41
Ceylan		2								2
Chad			2	2					1	5
China	7	3	7	5	7	11	16	12	22	90
Colombia				1						1
Congo (Brazzaville)		1		1						2
Congo (RD)	5	7	13		5	6	8	9	4	57
Djibouti	1	1	1		1		1	1	4	10
Eritrea	3	3	2	1	1	1	1	2	8	22
Ethiopia	2		2			1	2	1	1	9
Gambia								2		2
Georgia			1			2			1	4
Ghana							1			1
Guinea	15	15	34	18	20	17	15	11	27	172
Guinea-Bissau									1	1
Indefinite		7	8	2	4	3	4	3	4	35
Iran	6	6	7		3	2	2	3	6	35
Iraq	22	25	23	8	16	14	15	21	36	180
Ivory Coast		2	6	4	1	1		1		15
Jordania			2			1				3
Kazakhstan				1				1		2
Kenya					1				1	2
Kirghizstan				2						2
Kosovo	5	2	22	2			4	7	8	50
Lebanon				1	2					3
Leberia							1	1		2
Macedonia		1			1		1	8	1	12
Mali									1	1
Mauretania	2	3	4	3	1	1	1	2	1	18
Mexico	1									1
Moldavia			1							1
Morocco		1	1							2
Myanmar		1	1							2
Niger	1	4		1		2	1		1	10
Nigeria			1							1
North Corea	1					1				2
Pakistan			2		1					3
Palestine			2	1						3
Russia	2	13	26	9	5	8	12	13	9	97
Rwanda	3	9	6	7	13	1	23	15	5	82
Senegal	3	6	3	2	4	6	5	9	1	39
Serbia	1	7	3			13	7	7	13	51
Somalia	2	1	7	2	2	3	2	5	2	26
Sri Lanka	6	7	7	3		4	3	1	1	32
Stateless Persons	1									1
Sudan				2		5			2	9
Syria	7	10	8	3	9	6	3	2	5	53
Tanzania		2		1	2	1		1	3	10
Togo	1	3		1	1	1	2	2	2	13
Turkey	4	5	10	2	3	8	11	3	6	52
Uganda	1		1					1		3
Zimbabwe					1					1
<b>Total</b>	<b>122</b>	<b>177</b>	<b>250</b>	<b>102</b>	<b>127</b>	<b>161</b>	<b>160</b>	<b>163</b>	<b>208</b>	<b>1.470</b>

**Decisions to grant subsidiary protection per nationality (2010)**

Country of origin	Jan	Feb	March	April	May	June	July	Aug	Sep	Total
Afghanistan	3	17	25	14	15	12	21	21	36	164
Congo RD		2	1				1			4
Erytrea		1	1				2	1		5
Georgia				1						1
Guinea		1		1	1	1			3	7
Indefinite		1					1	5	1	8
Iraq	29	46	42	28	33	25	24	21	34	282
Palestina						1	3			4
Somalia	6	1	5	2		3	1	2	2	22
Sudan			1	1	1		2			5
Togo				1						1
<b>Total</b>	<b>38</b>	<b>69</b>	<b>75</b>	<b>48</b>	<b>50</b>	<b>42</b>	<b>55</b>	<b>50</b>	<b>76</b>	<b>503</b>

**Percentage of decisions to grant status (new asylum procedure 2007-2010)**  
 (refugee status or subsidiary protection status)

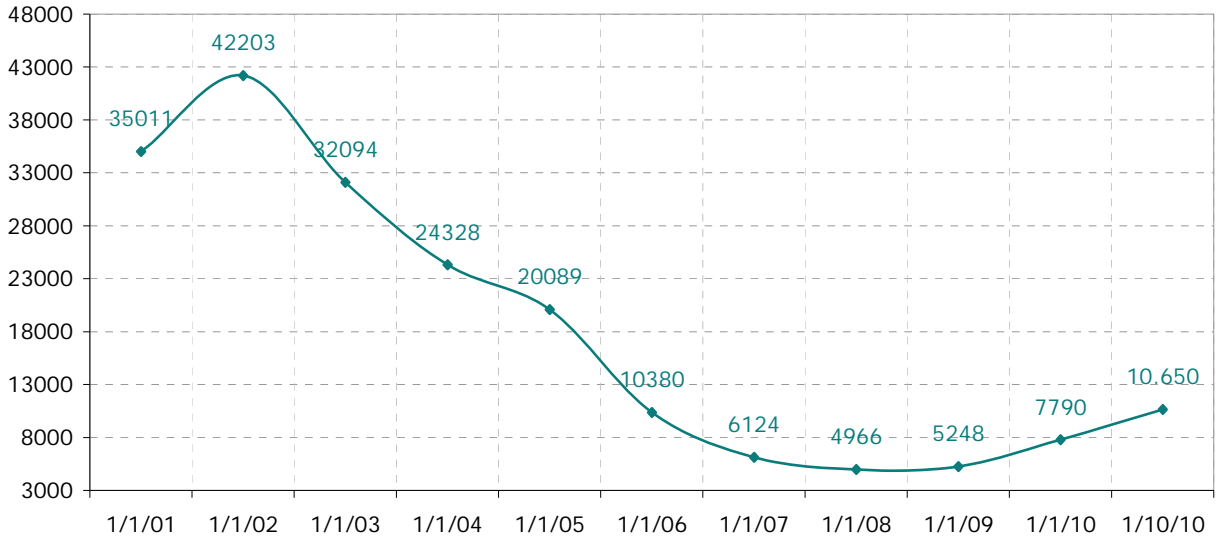
	Men	Women	Total
2007	21,1%	23,9%	22,5%
2008	27,2%	30,3%	28,8%
2009	23,9%	25,1%	24,5%
2010	22,2%	17,4%	19,8%



### 3. Evolution of the CGRS's backlog

*(Backlog in the processing of asylum applications at the CGRS)*

#### Backlog per year



#### Backlog per month 2010

