



**OFFICE OF THE COMMISSIONER
GENERAL FOR REFUGEES AND
STATELESS PERSONS**

ASYLUM STATISTICS
September 2011

Publisher: Office of the Commissioner General for Refugees and Stateless Persons
Communication – Information – Press
cgra.info@ibz.fgov.be

Contact: Tine Van Valckenborgh – tine.vanvalckenborgh@ibz.fgov.be – (+32) 2 205 50 56

Date: 07/10/2011

.be

Table

I. Asylum figures in 2011	2
1. Annually	
2. In September	
II. Asylum applications in Belgium	3
1. Number of asylum applications (first applications + multiple applications)	3
a. Applications per month (2006-2011)	
b. Applications per year (from 1990-2011)	
c. Top 10 of countries of origin in September 2011	
d. Top 10 of countries of origin in 2011	
e. Asylum applications – male/female ration in 2007-2011	
f. Asylum applications in 2008, 2009, 2010 and 2011 according to nationality	
2. First asylum applications	6
a. First applications per month (2006-2011)	
b. First applications per year (2006-2011)	
3. Multiple asylum applications	7
a. Multiple applications per month (2006-2011)	
b. Multiple applications per year (2006-2011)	
c. Top 10 of countries of origin for multiple applications in September 2011	
d. Top 10 of countries of origin for multiple applications in 2011	
4. Unaccompanied foreign minors	9
a. Applications from unaccompanied minors per month (2006-2011)	
b. Applications from unaccompanied minors per year (2006-2011)	
c. Top 5 of countries of origin of unaccompanied minors in September 2011	
d. Top 5 of countries of origin of unaccompanied minors in 2011	
e. Male/female ratio of unaccompanied foreign minor applicants in 2007-2011	
III. Asylum decisions in 2011	11
1. Decisions by the Immigration Department	
2. Decisions by the CGRS	
a. Number of decisions	
b. Recognition of refugee status, per nationality	
c. Granting subsidiary protection status, per nationality	
IV. Evolution of the caseload at the CGRS	14

I. Asylum figures in 2011

(source: Immigration department)

1. Annually

Asylum applications	Number of files	% of asylum applications
Number of asylum applications	18.122	
First asylum applications	14.526	80,16%
Multiple asylum applications	3.596	19,84%
Unaccompanied foreign minors	1291	7,12%
Decisions	Number of decisions	% of decisions
CGRS decisions	12.029	
Recognition of refugee status	2.102	17,47%
Subsidiary Protection (SP)	688	5,72%
Refusal to grant refugee status and SP	8.114	67,45%
Other	1.125	9,35%
Caseload at the CGRA	13.023	

2. September 2011

Asylum applications	Number of files	% of asylum applications
Number of asylum applications	2.480	
First asylum applications	2.021	81,49%
Multiple asylum applications	459	18,51%
Unaccompanied foreign minors	216	8,71%
Decisions	Number of decisions	% of decisions
CGRS decisions	1.749	
Recognition of refugee status	382	21,84%
Subsidiary Protection (SP)	104	5,95%
Refusal to grant refugee status and SP	1.098	62,78%
Other	165	9,43%
Caseload at the CGRA	13.023	

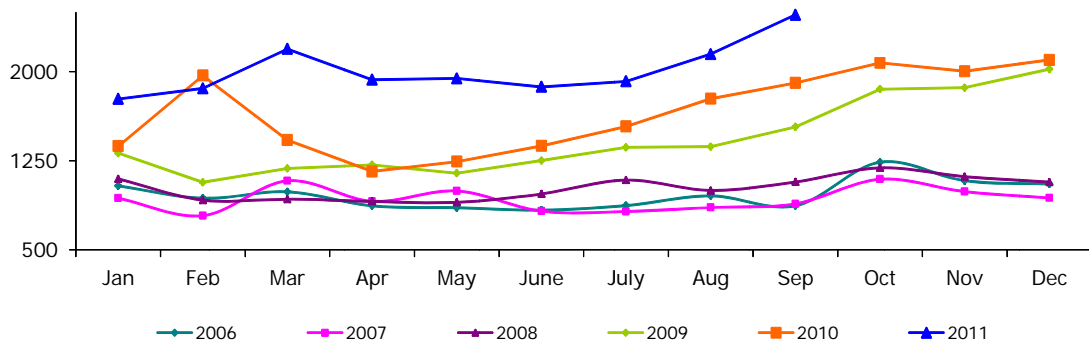
II. Asylum applications in Belgium

(source: Immigration Department unless otherwise stated)

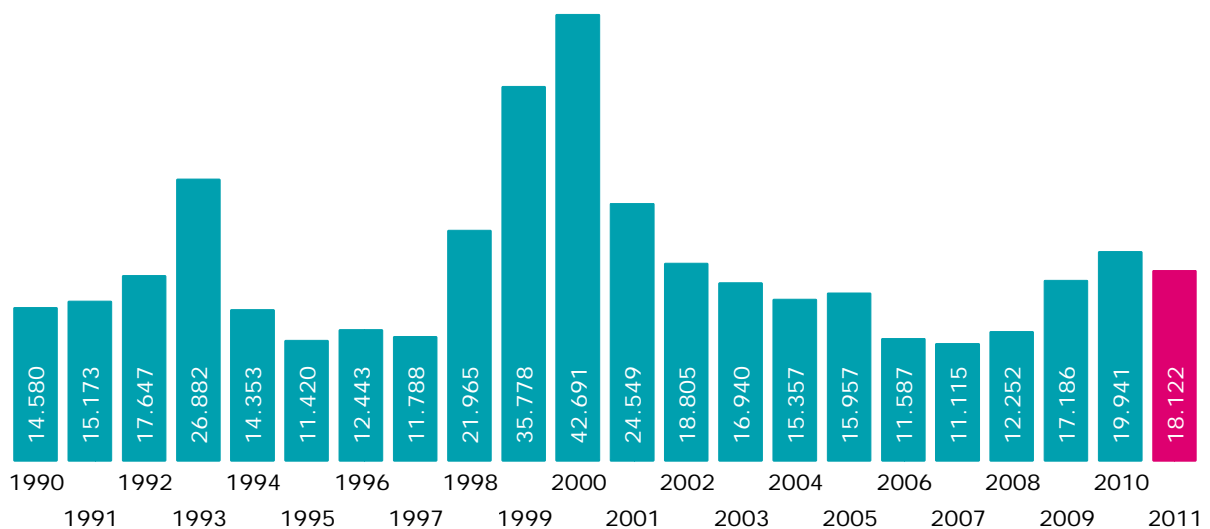
1. Number of asylum applications (first applications + multiple applications)

a. Applications per month (2006-2011)

	2006	2007	2008	2009	2010	2011	+/- in % 2011 vs 2010	+/- in % vs last month
January	1.038	934	1.097	1.314	1.373	1.771	28,99%	-15,67%
February	934	787	918	1.068	1.968	1.860	-5,49%	5,03%
March	988	1.081	926	1.185	1.424	2.193	54,00%	17,90%
April	870	908	907	1.215	1.160	1.933	66,64%	-11,86%
May	854	995	899	1.145	1.243	1.944	56,40%	0,57%
June	834	825	971	1.251	1.375	1.873	36,22%	-3,65%
July	872	822	1.087	1.363	1.539	1.919	24,69%	2,46%
August	954	856	1.000	1.368	1.773	2.149	21,21%	11,99%
September	870	887	1.071	1.535	1.906	2.480	30,12%	15,40%
October	1.238	1.094	1.190	1.853	2.076			
November	1.082	990	1.116	1.866	2.004			
December	1.053	936	1.070	2.023	2.100			
Total	11.587	11.115	12.252	17.186	19.941	18.122		



b. Applications per year (from 1990 until the end of September 2011)



c. Top 10 of countries of origin in September 2011

Country of origin	Number	%
1 Afghanistan	274	11,0%
2 Guinea	199	8,0%
3 Iraq	197	7,9%
4 Russia	149	6,0%
5 Kosovo	126	5,1%
6 Pakistan	121	4,9%
7 Bosnia-Herzegovina	111	4,5%
8 Serbia	100	4,0%
9 Congo RD	89	3,6%
10 Albania	84	3,4%
Other countries	1.030	41,5%
Total September 2011	2.480	100%
Percentage top 10	58,5%	

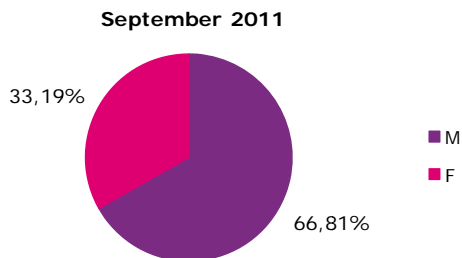
d. Top 10 of countries of origin in 2011

1 Afghanistan	2.126	11,7%
2 Guinea	1.476	8,1%
3 Iraq	1.440	7,9%
4 Kosovo	1.155	6,4%
5 Russia	1.102	6,1%
6 Serbia	877	4,8%
7 Congo RD	686	3,8%
8 Macedonia	659	3,6%
9 Pakistan	652	3,6%
10 Armenia	521	2,9%
Other countries	7.428	41,0%
Total 2011	18.122	100%
Percentage top 10	59,0%	

e. Asylum applications : male/female ratio of applicants from 2007 until 2011

(source: CGRS)

	Male	Female
2007	67,14%	32,86%
2008	69,27%	30,73%
2009	69,17%	30,83%
2010	68,22%	31,78%
2011	69,42%	30,58%



f. Applications in 2008, 2009, 2010 and 2011 according to nationality
 (in color and bold : top 10 in 2011)

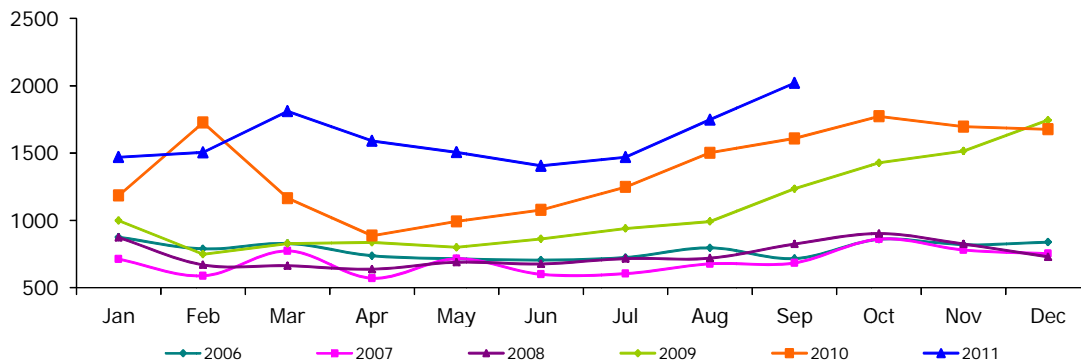
Country of origin	2008	2009	2010	2011
Afghanistan	879	1.659	1.411	2.126
Albania	172	256	204	320
Algeria	206	275	287	216
Angola	133	142	153	115
Argentina	0	0	8	1
Armenia	461	1.099	986	521
Azerbaijan	53	54	72	69
Bangladesh	79	75	177	279
Belorussia	58	40	53	61
Benin	16	50	56	40
Bhutan	34	24	19	7
Bosnia-Herzegovina	71	90	106	239
Brasil	1	2	3	1
Bulgaria	46	101	79	45
Burkina-Faso	32	52	69	72
Burundi	106	120	132	128
Cameroon	367	302	357	363
Canada	1	0	0	0
Cape Verde	1	0	0	0
Central African Rep.	7	6	4	3
Chad	16	16	21	5
China	189	329	235	278
Colombia	4	8	13	3
Congo RD	579	670	786	686
Congo RP	30	14	22	19
Croatia	3	16	15	7
Cuba	2	3	2	3
Czech Rep.	45	48	21	20
Djibouti	26	39	31	43
Dominican Rep.	1	9	1	4
Ecuador	2	0	0	0
Egypt	24	29	29	72
Equatorial Guinea	0	3	3	1
Eritrea	35	69	110	62
Estonia	0	0	1	0
Ethiopia	71	89	72	36
Fidji	0	0	0	1
France	0	0	0	6
Gabon	4	5	10	2
Gambia	35	41	57	45
Georgia	222	327	323	241
Germany	0	2	0	0
Ghana	20	29	65	78
Greece	0	0	1	0
Guatemala	0	7	1	0
Guinea	661	1.052	1.398	1.476
Guinea-Bissau	1	3	5	7
Guyana	0	1	0	0
Haiti	1	1	9	5
Hungary	16	143	36	7
India	84	123	151	136
Indonesia	1	3	0	0
Iran	614	732	386	310
Iraq	1.070	1.386	1.769	1.440
Israel	18	8	7	9
Italy	0	0	1	1
Ivory Coast	91	88	173	298
Jamaica	4	1	1	0
Jordania	21	15	10	20
Kampuchea	0	1	0	0
Kazakhstan	16	44	75	82
Kenia	55	42	65	42
Kirghizistan	14	19	117	68
Kosovo	478	1.539	1.848	1.155
Kuwait	1	0	1	0
Latvia	5	3	2	0
Libanon	85	95	70	59
Liberia	23	27	27	35
Libya	15	19	19	51

Country of origin	2008	2009	2010	2011
Lithuania	1	5	1	3
Macedonia	122	201	1.082	659
Madagascar	1	3	2	6
Malawi	0	0	0	1
Malaysia	0	2	0	0
Mali	5	11	25	26
Malta	0	0	2	0
Mauretania	128	187	206	133
Mauritius	0	1	3	6
Mexico	0	1	1	1
Moldova	14	29	14	7
Mongolia	43	85	61	47
Montenegro	7	12	14	23
Morocco	36	53	46	55
Mozambique	0	0	0	1
Myanmar	9	8	14	3
Nepal	39	65	203	226
Netherlands	0	2	1	0
Nicaragua	0	0	0	1
Niger	57	71	78	59
Nigeria	59	101	138	127
North Korea	2	4	16	45
Pakistan	150	233	340	652
Palestina	5	9	37	39
Panama	0	2	0	0
Peru	0	1	0	0
Philippines	0	1	0	1
Poland	2	6	0	0
Romania	43	98	56	53
Russia	1.620	1.605	1.526	1.102
Rwanda	273	308	337	309
Salvador	0	0	0	11
Saudi Arabia	0	0	1	1
Senegal	50	113	252	243
Serbia	572	514	1.233	877
Sierra Leone	42	45	65	57
Slovakia	239	261	53	32
Slovenia	0	1	0	0
Somalia	163	216	294	310
South Africa	1	1	0	1
South Korea	0	0	0	1
Spain	0	3	1	2
Sri Lanka	148	216	140	133
Sudan	62	89	92	57
Surinam	0	4	5	4
Syria	281	347	388	404
Tadzhikistan	1	5	7	6
Tanzania	49	90	89	123
Thailand	0	1	1	0
Timor-Leste	2	0	0	0
Togo	171	130	246	153
Tunisia	6	21	20	90
Turkey	284	259	277	278
Turkmenistan	0	5	3	3
Uganda	13	23	15	17
Ukraine	61	33	62	40
United Arab Emirates	0	2	0	0
USA	0	0	3	6
Uzbekistan	15	14	20	16
Venezuela	1	0	2	4
Vietnam	9	10	18	2
Yemen	7	8	11	13
Zimbabwe	8	4	3	2
Others	14	15	10	13
Indefinite	126	199	254	217
Stateless Persons	6	7	7	1
Refugees	0	1	1	0
Total	12.252	17.186	19.941	18.122

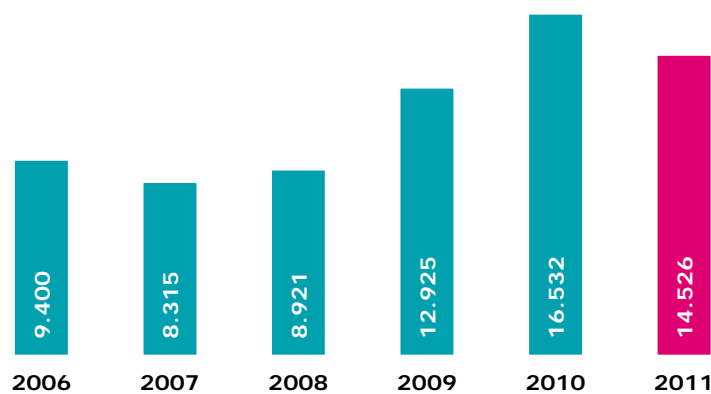
2. First asylum applications

a. First applications per month (2006-2011)

	2006	2007	2008	2009	2010	2011	+/- in % 2011 vs 2010	+/- en % vs last month
January	875	712	873	998	1.184	1.470	24,16%	-12,29%
February	788	588	669	749	1.726	1.505	-12,80%	2,38%
March	828	773	663	828	1.164	1.811	55,58%	20,33%
April	737	570	637	836	886	1.590	79,46%	-12,20%
May	715	715	689	799	992	1.506	51,81%	-5,28%
June	705	599	676	862	1.077	1.405	30,45%	-6,71%
July	724	604	716	940	1.248	1.470	17,79%	4,63%
August	796	677	719	991	1.502	1.748	16,38%	18,91%
September	716	684	824	1.235	1.608	2.021	25,68%	15,62%
October	859	861	902	1.428	1.773			
November	819	780	824	1.515	1.696			
December	838	752	729	1.744	1.676			
Total	9.400	8.315	8.921	12.925	16.532	14.526		



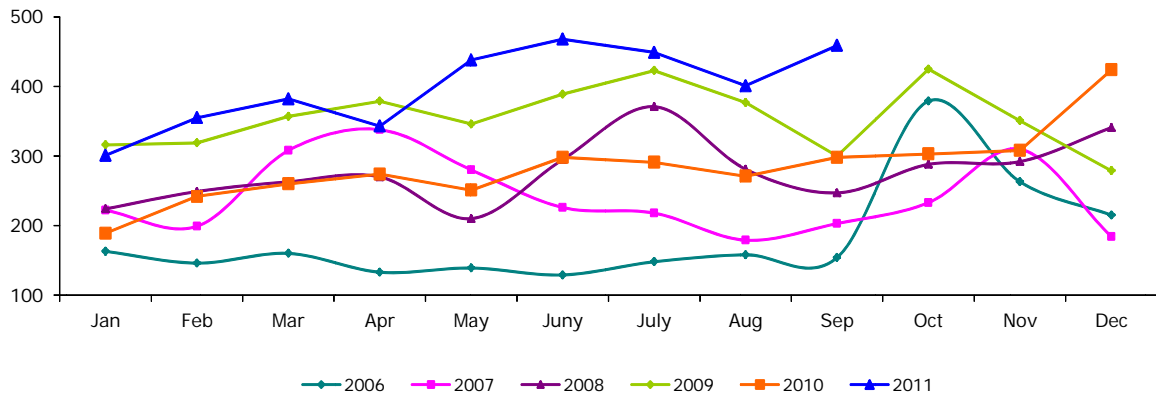
b. First applications per year (from 2006 until the end of September 2011)



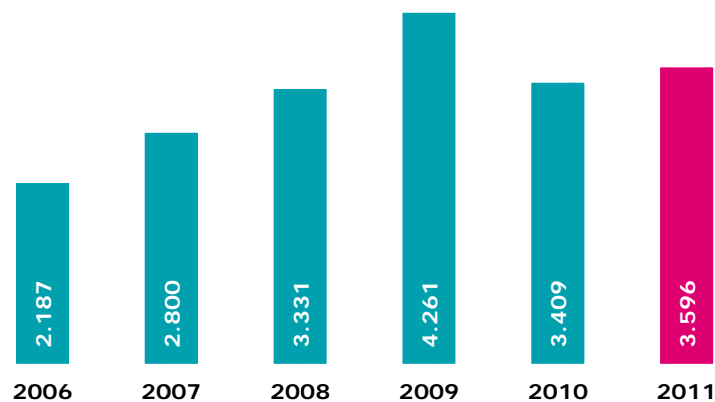
3. Multiple asylum applications

a. Multiple applications per month (2006-2011)

	2006	2007	2008	2009	2010	2011	+/- in % 2011 vs 2010	+/- in % vs last month
January	163	222	224	316	189	301	59,26%	-29,01%
February	146	199	249	319	242	355	46,69%	17,94%
March	160	308	263	357	260	382	46,92%	7,61%
April	133	338	270	379	274	343	25,18%	-10,21%
May	139	280	210	346	251	438	74,50%	27,70%
June	129	226	295	389	298	468	57,05%	6,85%
July	148	218	371	423	291	449	54,30%	-4,06%
August	158	179	281	377	271	401	47,97%	-10,69%
September	154	203	247	300	298	459	54,03%	14,46%
October	379	233	288	425	303			
November	263	210	292	351	308			
December	215	184	341	279	424			
Total	2.187	2.800	3.331	4.261	3.409	3.596		



b. Multiple applications per year (from 2006 until the end of September 2011)



c. Top 10 of countries of origin for multiple applications in September 2011

Country of origin	Number	%
1 Kosovo	49	10,7%
2 Serbia	42	9,2%
3 Russia	41	8,9%
4 Guinea	38	8,3%
5 Armenia	37	8,1%
6 Afghanistan	26	5,7%
7 Macedonia	23	5,0%
8 Iran	14	3,1%
9 Algeria	11	2,4%
10 Albania	10	2,2%
Turkey	10	2,2%
Other countries	158	34,4%
Total September 2011	459	100%
Percentage top 10	65,6%	

d. Top 10 of countries of origin for multiple applications in 2011

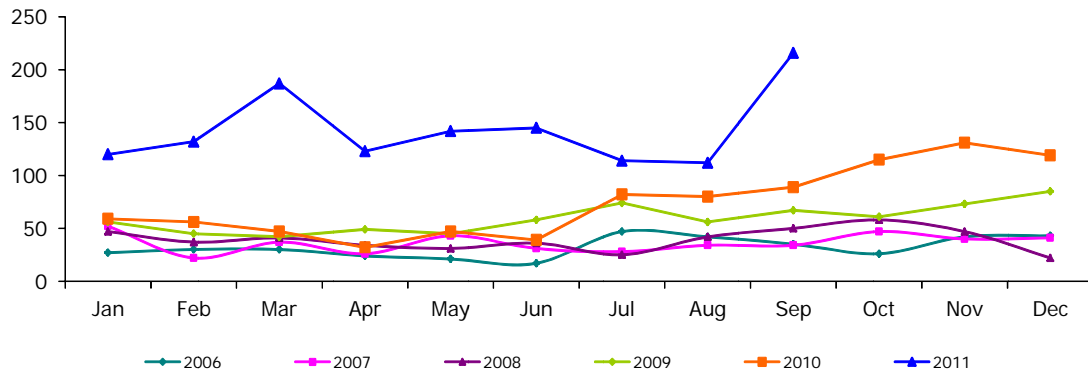
Country of origin	Number	%
1 Russia	364	10,1%
2 Kosovo	315	8,8%
3 Afghanistan	267	7,4%
4 Guinea	264	7,3%
5 Armenia	199	5,5%
6 Serbia	195	5,4%
7 Iraq	148	4,1%
8 Macedonia	128	3,6%
9 Syria	115	3,2%
10 Iran	101	2,8%
Other countries	1.500	41,7%
Total 2011	3.596	100%
Percentage top 10	58,3%	

4. Unaccompanied foreign minors

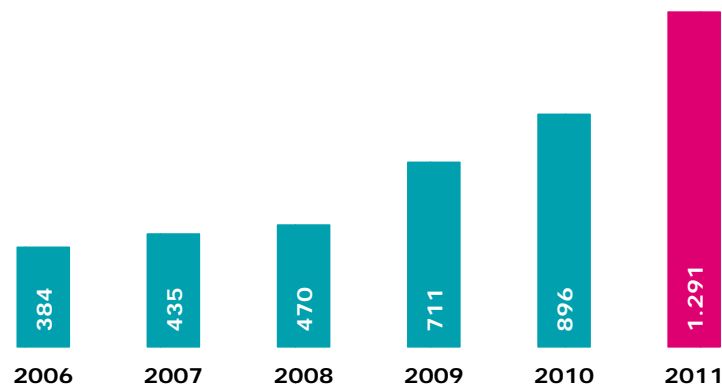
The figures given by Immigration department are liable to change according to the results of the bone age tests carried out to ascertain whether an alleged minor is younger than 18.

a. Applications from unaccompanied foreign minors per month (2006-2011)

	2006	2007	2008	2009	2010	2011	+/- in % 2011 vs 2010	+/- in % vs last month
January	27	52	47	56	59	120	103,39%	0,84%
February	30	22	37	45	56	132	135,71%	10,00%
March	30	37	41	42	47	187	297,87%	41,67%
April	24	26	34	49	32	123	284,38%	-34,22%
May	21	43	31	45	47	142	202,13%	15,45%
June	17	31	36	58	39	145	271,79%	2,11%
July	47	28	25	74	82	114	39,02%	-21,38%
August	42	34	42	56	80	112	40,00%	-1,75%
September	35	34	50	67	89	216	142,70%	92,86%
October	26	47	58	61	115			
November	42	40	47	73	131			
December	43	41	22	85	119			
Total	384	435	470	711	896	1.291		



b. Applications from unaccompanied foreign minors per year (from 2006 until the end of September 2011)



c. Top 5 of countries of origin of unaccompanied minors in September 2011

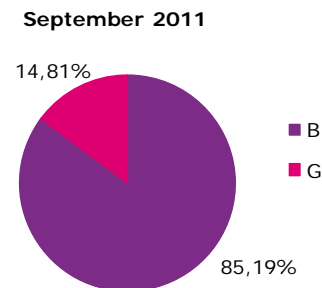
Country of origin	Number	%
1 Afghanistan	106	49,1%
2 Guinea	42	19,4%
3 Congo DR	7	3,2%
4 Bangladesh	6	2,8%
5 Gambia	5	2,3%
Russia	5	2,3%
Somalia	5	2,3%
Other countries	40	18,5%
Total September 2011	216	100%
Percentage top 5	81,5%	

d. Top 5 of countries of origin of unaccompanied minors in 2011

Country of origin	Number	%
1 Afghanistan	630	48,8%
2 Guinea	211	16,3%
3 Iraq	42	3,3%
4 Congo RD	38	2,9%
5 Somalia	29	
Pakistan	29	2,2%
Other countries	312	24,2%
Total 2011	1.291	98%
Percentage top 5	73,6%	

e. Male/female ratio of unaccompanied minor applicants

	Boys	Girls
2007	68,40%	31,60%
2008	71,40%	28,60%
2009	77,98%	22,02%
2010	72,88%	27,12%
2011	81,80%	18,20%



III. Asylum decisions in 2011

(source: CGRS)

1. Decisions by the Immigration Department

	January-Aug	September	Total
Transfer of files to CGI	13.139	1.454	14.593
25/26 quater (Dublin)	1.283	134	1.417
13 quater	1.362	149	1.511
Renunciation, ...	1.084	16	1.100
Total	16.868	1.753	18.621

The Immigration Department decides on certain kinds of applications: applications falling under the Dublin Regulation, multiple applications, renunciations etc. Applications not who de not fall within to these categories are transferred to the CGRS.

2. Decisions by the CGRS

a. Number of decisions

	Jan	Feb	March	April	May	June	July	Aug	Sept	Total
Recognition of refugee status	167	234	220	202	248	208	188	253	382	2.102
Granting of subsidiary protection	53	62	75	84	66	58	76	110	104	688
Refusal to grant refugee status and subsidiary protection	598	745	911	890	1.119	906	939	908	1.098	8.114
Refusal to take an asylum application into consideration (EU nationals)	3	10	16	9	7	5	14	17	6	87
Technical refusal	44	77	91	75	68	79	52	65	95	646
Exclusion from refugee status and from	1	2	1		3		3	1	4	15
Exclusion from refugee status and refusal to grant subsidiary protection		1	1	3	1					6
Refusal to grant refugee status and exclusion form subsidiary protection		2	4					3	2	11
Abolition of refugee status and/or subsidiary protection						2	4			6
Withdrawal of refugee status and/or subsidiary protection	6	2	2	2	1	4	2	4	3	26
Renunciation + closing of the case + departure IOM	19	40	23	24	30	30	27	29	44	266
Application which does not proceed to judgment: regularization under article 55	4	5	9	3	2	5	5	4	9	46
Application which does not proceed to judgment: (naturalization, death, administrative reasons)	3	2	3	1	2	1	1	1	2	16
Total	898	1.182	1.356	1.293	1.547	1.298	1.311	1.395	1.749	12.029

b. Recognition of refugee status, per nationality

(in color and bold : countries in the top 10 of asylum applications in 2011)

Country of origin	Jan	Feb	March	April	May	June	July	Aug	Sept	Total
Afghanistan	20	17	18	12	21	13	13	20	34	168
Albania		3		4	2	3		4	4	20
Algeria		1			1				1	3
Angola	1			1	1		2		1	6
Armenia	1						2		1	4
Azerbaijan		2							1	3
Bangladesh	1									1
Belorussia	1			1						2
Benin					1					1
Burkina Faso					1				1	2
Burundi	1	2	3	3	1	2	4	6	6	28
Cameroon	1	14	10	5	8	8	6	6	9	67
Chad		1		1	2					4
China	14	7	19	18	9	10	2		27	106
Colombia	1		3		1					5
Congo Brazzaville						1				1
Congo RD	7	10	2	1	4	4	6	6	16	56
Djibouti		2		1	1	1	4	1	2	12
Egypt					1		1	1		3
Eritrea	1	1		1	4	3	15	3	1	29
Ethiopia			1					1	1	2
Gabon		1			3					5
Gambia	1		1			1	1	2		6
Ghana					1				1	2
Guinea	27	47	32	31	45	49	30	39	96	396
Indefinite	6	5	5	3	5	7	4	4	2	41
India			1							1
Iran	1	3	3	4	9	2	2	1	2	27
Iraq	27	36	49	35	38	26	24	42	43	320
Ivory Coast	1			1	1	3			1	7
Jordania			1						2	3
Kazakhstan						1				1
Kenia		2	2						1	5
Kosovo	11	13	10	18	9	1	20	21	16	119
Kuwait	1									1
Libanon	1			2	2	1	1	2		9
Liberia					1				1	2
Macedonia		1						2		3
Madagascar						1	1			2
Mali						2			1	3
Mauretania		1	2	1	1	2	1	1		9
Mauritius					1					1
Morocco	1	1							1	3
Myanmar			1	2		1		4	1	9
Niger	2	3	1	6						12
Nigeria		1						1		2
North Korea	2	4	3	1	1	3		1	5	20
Pakistan					1	2	1			4
Palestine				1		2		1	1	5
Russia	9	5	9	12	15	16	12	23	42	143
Rwanda	2	14	11	4	14	7	5	19	9	85
Senegal	5	6	7	7	10	10	6	15	17	83
Serbia	4	9		4	5	5	5	6	11	49
Sierra Leone		4				2				6
Somalia	3	1	6	4	12	10	8	7	8	59
Sri Lanka	2	4		4	8	4	4	6	4	36
Sudan			1				3	1		5
Syria	8	4	12	8			1	1	2	36
Tanzania	2	2	1					3		8
Togo		2	4		4	2	4	1	1	18
Turkey	2	4	2	5	3	2		2	9	29
Turkmenistan		1								1
Uganda				1	1					2
Zimbabwe						1				1
Total	167	234	220	202	248	208	188	253	382	2.102

c. Granting of subsidiary protection, per nationality

(in color and bold : countries in the top 10 of asylum applications in 2011)

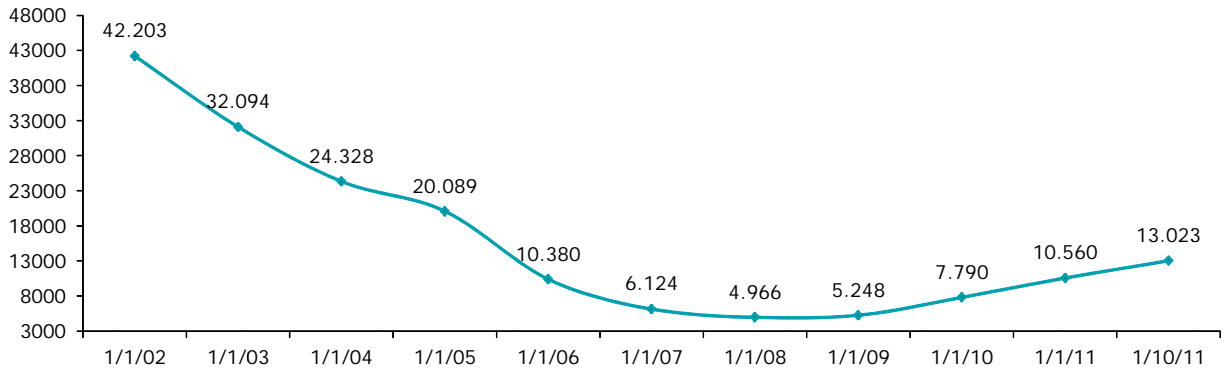
Country of origin	Jan	Feb	March	April	May	June	July	Aug	Sept	Total
Afghanistan	27	31	22	30	19	19	21	29	32	230
Angola					1					1
Burundi			1						1	2
Cameroon			1				1			2
Congo (RD)	1		2				1		1	5
El Salvador							2			2
Erytrea								1		1
Guinea	1					1	1	2	2	7
Indefinite		4	1			1	3	2		11
Iraq	21	22	44	53	41	32	41	68	63	385
Ivory Coast									1	1
Palestine	1						1	2	2	6
Russia								2		2
Somalia	2	4	1	1	4	5	5	1		23
Sudan			1		1			2	2	6
Tanzania			2							2
Togo								1		1
Yemen		1								1
Total	53	62	75	84	66	58	76	110	104	688

IV. Evolution of the caseload at the CGRS

(Caseload in assessing asylum applications at the CGRS)

At the end of August 2011, the CGRA had a total caseload of **13,023** dossiers, of which **4,500** dossiers may be considered a normal workload. The backlog as such amounted therefore to **8.523** dossiers.

Caseload per year



Caseload per month in 2010 and January - September 2011

