



**OFFICE OF THE COMMISSIONER
GENERAL FOR REFUGEES AND
STATELESS PERSONS**

ASYLUM STATISTICS
October 2011

Publisher: Office of the Commissioner General for Refugees and Stateless Persons
Communication – Information – Press
cgra.info@ibz.fgov.be

Contact: Tine Van Valckenborgh – tine.vanvalckenborgh@ibz.fgov.be – (+32) 2 205 50 56

Date: 10/11/2011

.be

Table

I. Asylum figures in 2011	2
1. Annually	
2. In October	
II. Asylum applications in Belgium	3
1. Number of asylum applications (first applications + multiple applications)	3
a. Applications per month (2006-2011)	
b. Applications per year (from 1990-2011)	
c. Top 10 of countries of origin in October 2011	
d. Top 10 of countries of origin in 2011	
e. Asylum applications – male/female ration in 2007-2011	
f. Asylum applications in 2008, 2009, 2010 and 2011 according to nationality	
2. First asylum applications	6
a. First applications per month (2006-2011)	
b. First applications per year (2006-2011)	
3. Multiple asylum applications	7
a. Multiple applications per month (2006-2011)	
b. Multiple applications per year (2006-2011)	
c. Top 10 of countries of origin for multiple applications in October 2011	
d. Top 10 of countries of origin for multiple applications in 2011	
4. Unaccompanied foreign minors	9
a. Applications from unaccompanied minors per month (2006-2011)	
b. Applications from unaccompanied minors per year (2006-2011)	
c. Top 5 of countries of origin of unaccompanied minors in October 2011	
d. Top 5 of countries of origin of unaccompanied minors in 2011	
e. Male/female ratio of unaccompanied foreign minor applicants in 2007-2011	
III. Asylum decisions in 2011	11
1. Decisions by the Immigration Department	
2. Decisions by the CGRS	
a. Number of decisions	
b. Recognition of refugee status, per nationality	
c. Granting subsidiary protection status, per nationality	
IV. Evolution of the caseload at the CGRS	14

I. Asylum figures in 2011

(source: Immigration department)

1. Annually

Asylum applications	Number of files	% of asylum applications
Number of asylum applications	20.726	
First asylum applications	16.632	80,25%
Multiple asylum applications	4.094	19,75%
Unaccompanied foreign minors	1.470	7,09%
Decisions	Number of decisions	% of decisions
CGRS decisions	13.614	
Recognition of refugee status	2.362	17,35%
Subsidiary Protection (SP)	822	6,04%
Refusal to grant refugee status and SP	9.884	72,60%
Other	546	4,01%
Caseload at the CGRA	13.618	

2. October 2011

Asylum applications	Number of files	% of asylum applications
Number of asylum applications	2.604	
First asylum applications	2.106	80,88%
Multiple asylum applications	498	19,12%
Unaccompanied foreign minors	179	6,87%
Decisions	Number of decisions	% of decisions
CGRS decisions	1.583	
Recognition of refugee status	259	16,36%
Subsidiary Protection (SP)	133	8,40%
Refusal to grant refugee status and SP	1.124	71,00%
Other	67	4,23%
Caseload at the CGRA	13.618	

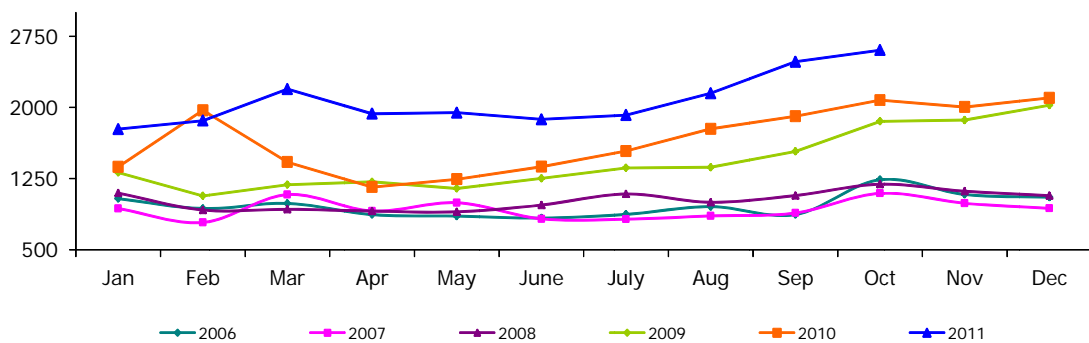
II. Asylum applications in Belgium

(source: Immigration Department unless otherwise stated)

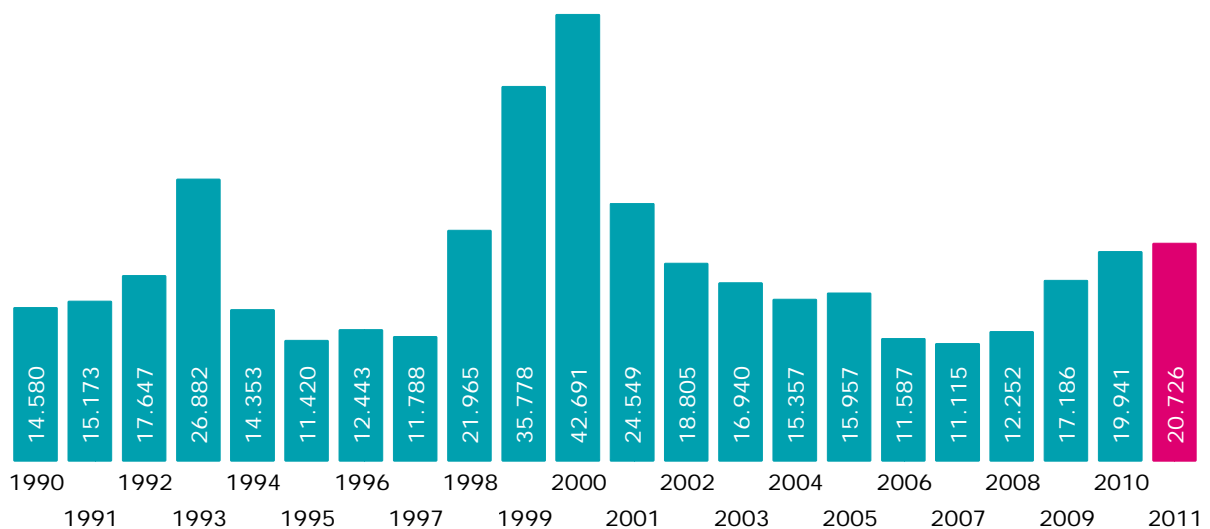
1. Number of asylum applications (first applications + multiple applications)

a. Applications per month (2006-2011)

	2006	2007	2008	2009	2010	2011	+/- in % 2011 vs 2010	+/- in % vs last month
January	1.038	934	1.097	1.314	1.373	1.771	28,99%	-15,67%
February	934	787	918	1.068	1.968	1.860	-5,49%	5,03%
March	988	1.081	926	1.185	1.424	2.193	54,00%	17,90%
April	870	908	907	1.215	1.160	1.933	66,64%	-11,86%
May	854	995	899	1.145	1.243	1.944	56,40%	0,57%
June	834	825	971	1.251	1.375	1.873	36,22%	-3,65%
July	872	822	1.087	1.363	1.539	1.919	24,69%	2,46%
August	954	856	1.000	1.368	1.773	2.149	21,21%	11,99%
September	870	887	1.071	1.535	1.906	2.480	30,12%	15,40%
October	1.238	1.094	1.190	1.853	2.076	2.604	25,43%	5,00%
November	1.082	990	1.116	1.866	2.004			
December	1.053	936	1.070	2.023	2.100			
Total	11.587	11.115	12.252	17.186	19.941	20.726		



b. Applications per year (from 1990 until the end of October 2011)



c. Top 10 of countries of origin in October 2011

Country of origin	Number	%
1 Albania	342	13,1%
2 Afghanistan	229	8,8%
3 Guinea	216	8,3%
4 Iraq	166	6,4%
5 Russia	139	5,3%
6 Kosovo	116	4,5%
7 Congo RD	95	3,6%
8 Pakistan	94	3,6%
9 Serbia	83	3,2%
10 Macedonia	70	2,7%
Other countries	1.054	40,5%
Total October 2011	2.604	100%
Percentage top 10	59,5%	

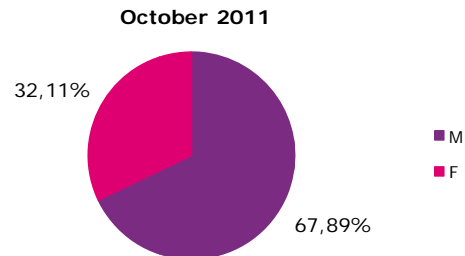
d. Top 10 of countries of origin in 2011

Country of origin	Number	%
1 Afghanistan	2.355	11,4%
2 Guinea	1.692	8,2%
3 Iraq	1.606	7,7%
4 Kosovo	1.271	6,1%
5 Russia	1.241	6,0%
6 Serbia	960	4,6%
7 Congo RD	781	3,8%
8 Pakistan	746	3,6%
9 Macedonia	729	3,5%
10 Albania	662	3,2%
Other countries	8.683	41,9%
Total 2011	20.726	100%
Percentage top 10	58,1%	

e. Asylum applications : male/female ratio of applicants from 2007 until 2011

(source: CGRS)

	Male	Female
2007	67,14%	32,86%
2008	69,27%	30,73%
2009	69,17%	30,83%
2010	68,22%	31,78%
2011	69,26%	30,74%



f. Applications in 2008, 2009, 2010 and 2011 according to nationality
 (in color and bold : top 10 in 2011)

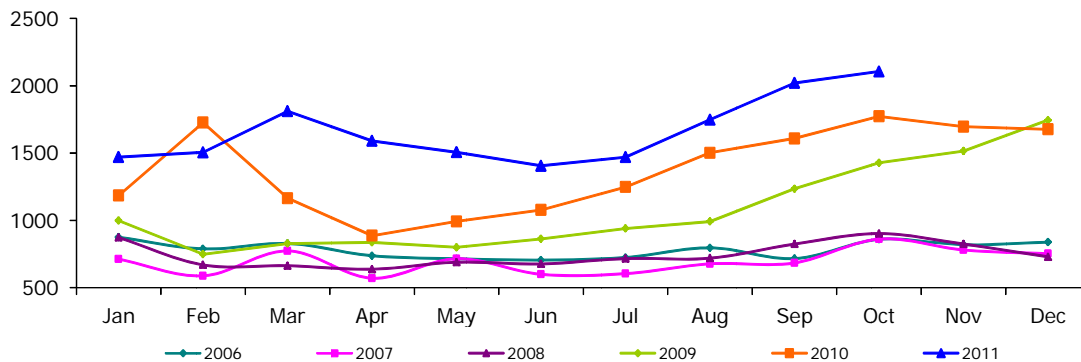
Country of origin	2008	2009	2010	2011
Afghanistan	879	1.659	1.411	2.355
Albania	172	256	204	662
Algeria	206	275	287	251
Angola	133	142	153	130
Argentina	0	0	8	1
Armenia	461	1.099	986	583
Azerbaijan	53	54	72	79
Bangladesh	79	75	177	343
Belorussia	58	40	53	66
Benin	16	50	56	46
Bhutan	34	24	19	10
Bolivia	0	0	0	1
Bosnia-Herzegovina	71	90	106	260
Brasil	1	2	3	1
Bulgaria	46	101	79	64
Burkina-Faso	32	52	69	79
Burundi	106	120	132	143
Cameroon	367	302	357	414
Canada	1	0	0	0
Cape Verde	1	0	0	0
Central African Rep.	7	6	4	3
Chad	16	16	21	8
Chili	0	0	0	3
China	189	329	235	324
Colombia	4	8	13	3
Congo RD	579	670	786	781
Congo RP	30	14	22	20
Croatia	3	16	15	8
Cuba	2	3	2	3
Czech Rep.	45	48	21	22
Djibouti	26	39	31	45
Dominican Rep.	1	9	1	4
Ecuador	2	0	0	0
Egypt	24	29	29	84
Equatorial Guinea	0	3	3	1
Eritrea	35	69	110	63
Estonia	0	0	1	0
Ethiopia	71	89	72	42
Fidji	0	0	0	1
France	0	0	0	6
Gabon	4	5	10	3
Gambia	35	41	57	51
Georgia	222	327	323	260
Germany	0	2	0	0
Ghana	20	29	65	90
Greece	0	0	1	0
Guatemala	0	7	1	1
Guinea	661	1.052	1.398	1.692
Guinea-Bissau	1	3	5	8
Guyana	0	1	0	0
Haiti	1	1	9	6
Hungary	16	143	36	7
India	84	123	151	154
Indonesia	1	3	0	0
Iran	614	732	386	342
Iraq	1.070	1.386	1.769	1.606
Israel	18	8	7	9
Italy	0	0	1	1
Ivory Coast	91	88	173	323
Jamaica	4	1	1	0
Jordania	21	15	10	20
Kampuchea	0	1	0	0
Kazakhstan	16	44	75	91
Kenia	55	42	65	45
Kirghizistan	14	19	117	80
Kosovo	478	1.539	1.848	1.271
Kuwait	1	0	1	0
Latvia	5	3	2	0
Libanon	85	95	70	65
Liberia	23	27	27	35

Country of origin	2008	2009	2010	2011
Libya	15	19	19	53
Lithuania	1	5	1	3
Macedonia	122	201	1.082	729
Madagascar	1	3	2	6
Malawi	0	0	0	1
Malaysia	0	2	0	0
Mali	5	11	25	29
Malta	0	0	2	0
Mauretania	128	187	206	155
Mauritius	0	1	3	7
Mexico	0	1	1	1
Moldova	14	29	14	7
Mongolia	43	85	61	53
Montenegro	7	12	14	26
Morocco	36	53	46	68
Mozambique	0	0	0	1
Myanmar	9	8	14	3
Nepal	39	65	203	277
Netherlands	0	2	1	0
Nicaragua	0	0	0	1
Niger	57	71	78	76
Nigeria	59	101	138	136
North Corea	2	4	16	52
Pakistan	150	233	340	746
Palestina	5	9	37	43
Panama	0	2	0	0
Peru	0	1	0	0
Philippines	0	1	0	1
Poland	2	6	0	0
Romania	43	98	56	64
Russia	1.620	1.605	1.526	1.241
Rwanda	273	308	337	363
Salvador	0	0	0	12
Saudi Arabia	0	0	1	1
Senegal	50	113	252	294
Serbia	572	514	1.233	960
Sierra Leone	42	45	65	63
Slovakia	239	261	53	33
Slovenia	0	1	0	0
Somalia	163	216	294	365
South Africa	1	1	0	1
South Corea	0	0	0	1
Spain	0	3	1	2
Sri Lanka	148	216	140	144
Sudan	62	89	92	66
Surinam	0	4	5	5
Syria	281	347	388	453
Tadzhikistan	1	5	7	6
Tanzania	49	90	89	128
Thailand	0	1	1	0
Timor-Leste	2	0	0	0
Togo	171	130	246	187
Tunisia	6	21	20	95
Turkey	284	259	277	321
Turkmenistan	0	5	3	3
Uganda	13	23	15	23
Ukraine	61	33	62	48
United Arabic Emirates	0	2	0	0
USA	0	0	3	6
Uzbekistan	15	14	20	17
Venezuela	1	0	2	4
Vietnam	9	10	18	4
Yemen	7	8	11	13
Zimbabwe	8	4	3	3
Others	14	15	10	16
Indefinite	126	199	254	240
Stateless Persons	6	7	7	1
Refugees	0	1	1	0
Total	12.252	17.186	19.941	20.726

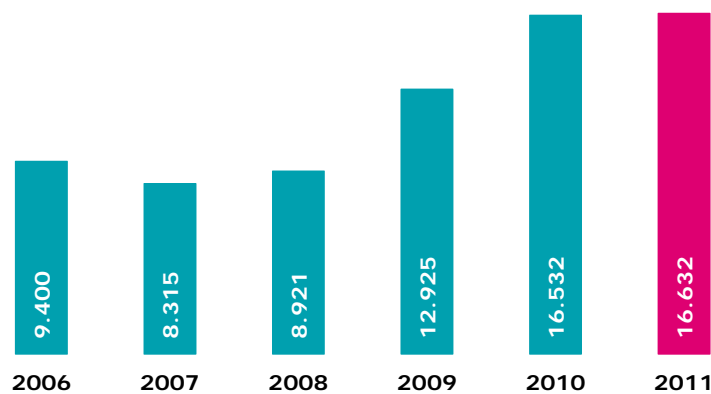
2. First asylum applications

a. First applications per month (2006-2011)

	2006	2007	2008	2009	2010	2011	+/- in % 2011 vs 2010	+/- en % vs last month
January	875	712	873	998	1.184	1.470	24,16%	-12,29%
February	788	588	669	749	1.726	1.505	-12,80%	2,38%
March	828	773	663	828	1.164	1.811	55,58%	20,33%
April	737	570	637	836	886	1.590	79,46%	-12,20%
May	715	715	689	799	992	1.506	51,81%	-5,28%
June	705	599	676	862	1.077	1.405	30,45%	-6,71%
July	724	604	716	940	1.248	1.470	17,79%	4,63%
August	796	677	719	991	1.502	1.748	16,38%	18,91%
September	716	684	824	1.235	1.608	2.021	25,68%	15,62%
October	859	861	902	1.428	1.773	2.106	18,78%	4,21%
November	819	780	824	1.515	1.696			
December	838	752	729	1.744	1.676			
Total	9.400	8.315	8.921	12.925	16.532	16.632		



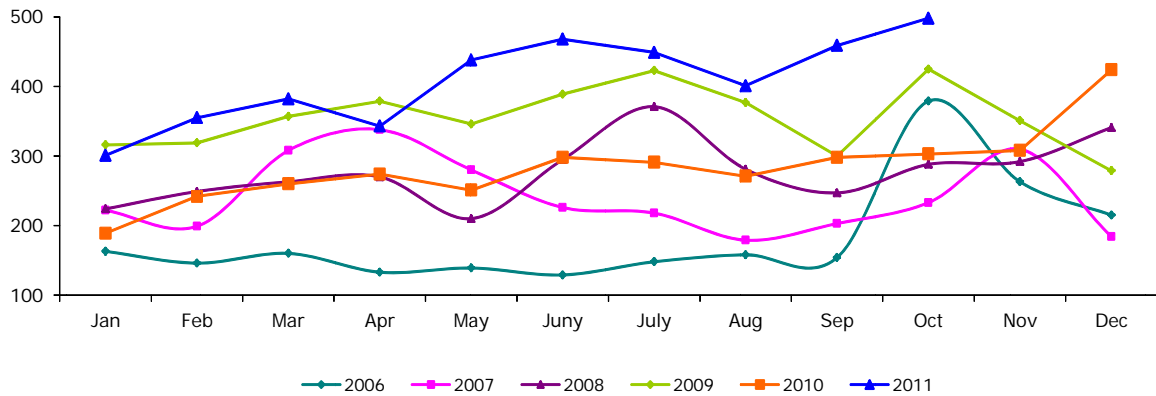
b. First applications per year (from 2006 until the end of October 2011)



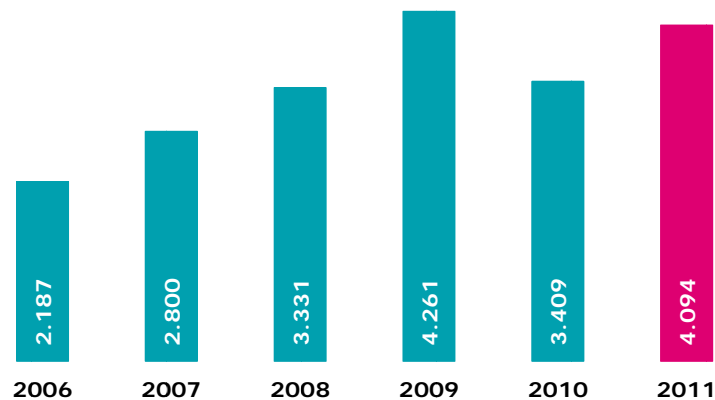
3. Multiple asylum applications

a. Multiple applications per month (2006-2011)

	2006	2007	2008	2009	2010	2011	+/- in % 2011 vs 2010	+/- in % vs last month
January	163	222	224	316	189	301	59,26%	-29,01%
February	146	199	249	319	242	355	46,69%	17,94%
March	160	308	263	357	260	382	46,92%	7,61%
April	133	338	270	379	274	343	25,18%	-10,21%
May	139	280	210	346	251	438	74,50%	27,70%
June	129	226	295	389	298	468	57,05%	6,85%
July	148	218	371	423	291	449	54,30%	-4,06%
August	158	179	281	377	271	401	47,97%	-10,69%
September	154	203	247	300	298	459	54,03%	14,46%
October	379	233	288	425	303	498	64,36%	8,50%
November	263	210	292	351	308			
December	215	184	341	279	424			
Total	2.187	2.800	3.331	4.261	3.409	4.094		



b. Multiple applications per year (from 2006 until the end of October 2011)



c. Top 10 of countries of origin for multiple applications in October 2011

Country of origin	Number	%
1 Russia	53	10,6%
2 Kosovo	50	10,0%
3 Guinea	45	9,0%
4 Afghanistan	36	7,2%
5 Armenia	33	6,6%
6 Serbia	32	6,4%
7 Albania	27	5,4%
8 Rwanda	20	4,0%
9 Iraq	18	3,6%
10 Senegal	16	3,2%
Other countries	168	33,7%
Total October 2011	498	100%
Percentage top 10	66,3%	

d. Top 10 of countries of origin for multiple applications in 2011

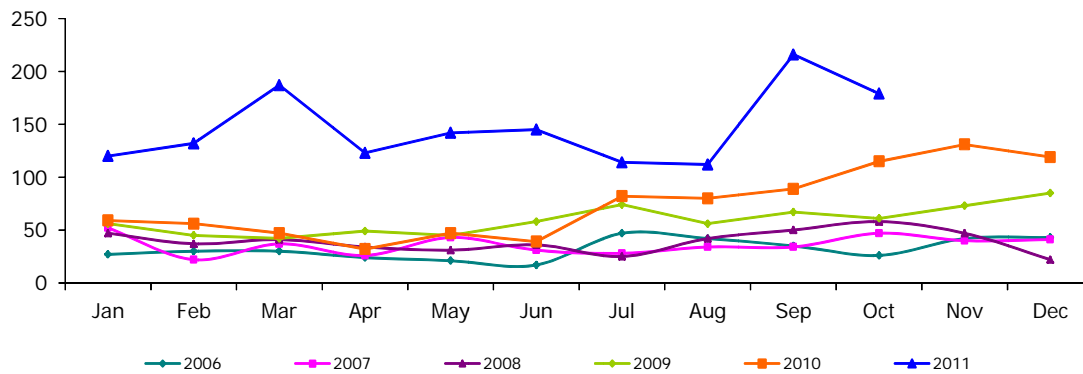
Country of origin	Number	%
1 Russia	417	10,2%
2 Kosovo	365	8,9%
3 Guinea	309	7,5%
4 Afghanistan	303	7,4%
5 Armenia	232	5,7%
6 Serbia	227	5,5%
7 Iraq	166	4,1%
8 Macedonia	140	3,4%
9 Syria	125	3,1%
10 Rwanda	107	2,6%
Other countries	1.703	41,6%
Total 2011	4.094	100%
Percentage top 10	58,4%	

4. Unaccompanied foreign minors

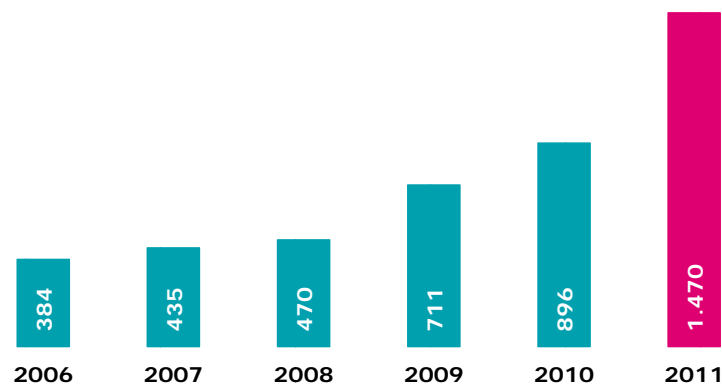
The figures given by Immigration department are liable to change according to the results of the bone age tests carried out to ascertain whether an alleged minor is younger than 18.

a. Applications from unaccompanied foreign minors per month (2006-2011)

	2006	2007	2008	2009	2010	2011	+/- in % 2011 vs 2010	+/- in % vs last month
January	27	52	47	56	59	120	103,39%	0,84%
February	30	22	37	45	56	132	135,71%	10,00%
March	30	37	41	42	47	187	297,87%	41,67%
April	24	26	34	49	32	123	284,38%	-34,22%
May	21	43	31	45	47	142	202,13%	15,45%
June	17	31	36	58	39	145	271,79%	2,11%
July	47	28	25	74	82	114	39,02%	-21,38%
August	42	34	42	56	80	112	40,00%	-1,75%
September	35	34	50	67	89	216	142,70%	92,86%
October	26	47	58	61	115	179	55,65%	-17,13%
November	42	40	47	73	131			
December	43	41	22	85	119			
Total	384	435	470	711	896	1.470		



b. Applications from unaccompanied foreign minors per year (from 2006 until the end of October 2011)



c. Top 5 of countries of origin of unaccompanied minors in October 2011

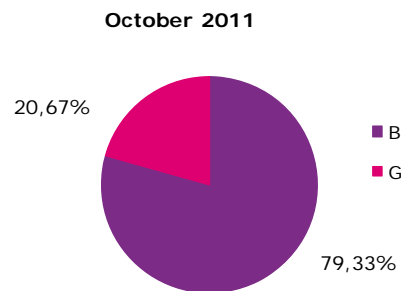
Country of origin	Number	%
1 Afghanistan	79	44,1%
2 Guinea	39	21,8%
3 Albania	7	3,9%
4 Congo DR	5	2,8%
Bangladesh	5	2,8%
5 Macedonia	4	2,2%
Cameroon	4	2,2%
Other countries	36	20,1%
Total October 2011	179	100%
Percentage top 5	79,9%	

d. Top 5 of countries of origin of unaccompanied minors in 2011

Country of origin	Number	%
1 Afghanistan	709	48,2%
2 Guinea	250	17,0%
3 Iraq	45	3,1%
4 Congo RD	43	2,9%
5 Pakistan	32	2,2%
Other countries	391	26,6%
Total 2011	1.470	100%
Percentage top 5	73,4%	

e. Male/female ratio of unaccompanied minor applicants

	Boys	Girls
2007	68,40%	31,60%
2008	71,40%	28,60%
2009	77,98%	22,02%
2010	72,88%	27,12%
2011	81,50%	18,50%



III. Asylum decisions in 2011

(source: CGRS)

1. Decisions by the Immigration Department

	January-Sept	October	Total
Transfer of files to CGI	14.641	1.697	16.338
25/26 quater (Dublin)	1.444	100	1.544
13 quater	1.514	157	1.671
Renunciation, ...	1.253	19	1.272
Total	18.852	1.973	20.825

The Immigration Department decides on certain kinds of applications: applications falling under the Dublin Regulation, multiple applications, renunciations etc. Applications not who de not fall within to these categories are transferred to the CGRS.

2. Decisions by the CGRS

a. Number of decisions

	Jan	Feb	March	April	May	June	July	Aug	Sept	Oct	Total
Recognition of refugee status	167	234	220	202	248	208	188	253	383	259	2.362
Granting of subsidiary protection	53	62	75	84	66	58	76	111	104	133	822
Refusal to grant refugee status and subsidiary protection	598	745	911	890	1.119	906	939	908	1.098	1.067	9.181
Refusal to take an asylum application into consideration (EU nationals)	3	10	16	9	7	5	14	17	6	12	99
Technical refusal	44	77	91	75	68	79	52	65	95	57	703
Exclusion from refugee status and from subsidiary protection	1	2	1		3		3	1	4	3	18
Exclusion from refugee status and refusal to grant subsidiary protection			1	1	3	1				3	9
Refusal to grant refugee status and exclusion form subsidiary protection		2	4					3	2	1	12
Abolition of refugee status and/or subsidiary protection							2	4		1	7
Withdrawal of refugee status and/or subsidiary protection	6	2	2	2	1	4	2	4	3		26
Renunciation + closing of the case + departure IOM	19	40	23	24	30	30	27	29	44	37	303
Application which does not proceed to judgment: regularization under article 55	4	5	9	3	2	5	5	4	9	5	51
Application which does not proceed to judgment: (naturalization, death, administrative reasons)	3	2	3	1	2	1	1	1	2	5	21
Total	898	1.182	1.356	1.293	1.547	1.298	1.311	1.396	1.750	1.583	13.614

b. Recognition of refugee status, per nationality

(in color and bold : countries in the top 10 of asylum applications in 2011)

Country of origin	Jan	Feb	March	April	May	June	July	Aug	Sept	Oct	Total
Afghanistan	20	17	18	12	21	13	13	20	34	36	204
Albania		3		4	2	3		4	4		20
Algeria		1			1				1	2	5
Angola	1			1	1		2		1		6
Armenia	1						2		1		4
Azerbaijan			2						1		3
Bangladesh	1										1
Belorussia	1			1							2
Benin					1					1	2
Burkina Faso					1				1		2
Burundi	1	2	3	3	1	2	4	6	6	2	30
Cameroon	1	14	10	5	8	8	6	6	9	3	70
Chad		1		1	2						4
China	14	7	19	18	9	10	2		27	18	124
Colombia	1		3		1						5
Congo Brazzaville						1					1
Congo RD	7	10	2	1	4	4	6	6	16	5	61
Djibouti		2		1	1	1	4	1	2	1	13
Egypt					1		1	1			3
Eritrea	1	1		1	4	3	15	3	1		29
Ethiopia								1	1	1	3
Gabon		1	1		3						5
Gambia	1		1			1	1	2		1	7
Ghana					1				1		2
Guinea	27	47	32	31	45	49	30	39	96	61	457
Indefinite	6	5	5	3	5	7	4	4	2	4	45
India			1								1
Iran	1	3	3	4	9	2	2	1	2	9	36
Iraq	27	36	49	35	38	26	24	42	43	37	357
Ivory Coast	1			1	1	3			1	2	9
Jordania			1						2		3
Kazakhstan						1					1
Kenia		2	2						1	1	6
Kosovo	11	13	10	18	9	1	20	21	16	9	128
Kuwait	1										1
Libanon	1			2	2	1	1	2			9
Liberia					1				1		2
Macedonia		1						2			3
Madagascar						1	1				2
Mali						2			1	1	4
Mauretania		1	2	1	1	2	1	1		4	13
Mauritius					1						1
Morocco	1	1							1		3
Myanmar			1	2		1		4	1		9
Niger	2	3	1	6						1	13
Nigeria		1						1			2
North Corea	2	4	3	1	1	3		1	5	1	21
Pakistan					1	2	1				5
Palestine				1		2		1	1		5
Russia	9	5	9	12	15	16	12	23	42	27	170
Rwanda	2	14	11	4	14	7	5	19	10	1	87
Senegal	5	6	7	7	10	10	6	15	17	7	90
Serbia	4	9		4	5	5	5	6	11		49
Sierra Leone		4				2					6
Somalia	3	1	6	4	12	10	8	7	8	9	68
Sri Lanka	2	4		4	8	4	4	6	4	4	40
Sudan			1				3	1			5
Syria	8	4	12	8			1	1	2	2	38
Tanzania	2	2	1					3		2	10
Togo		2	4		4	2	4	1	1	3	21
Turkey	2	4	2	5	3	2		2	9	3	32
Turkmenistan		1									1
Uganda				1	1						2
Zimbabwe						1					1
Total	167	234	220	202	248	208	188	253	383	259	2.362

c. Granting of subsidiary protection, per nationality
 (in color and bold : countries in the top 10 of asylum applications in 2011)

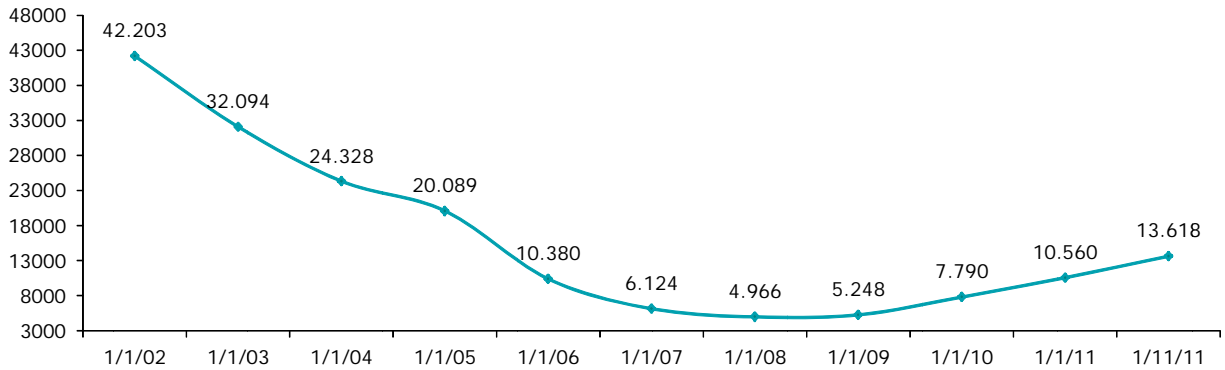
Country of origin	Jan	Feb	March	April	May	June	July	Aug	Sept	Oct	Total
Afghanistan	27	31	22	30	19	19	21	29	32	60	290
Angola					1						1
Burundi			1						1	1	3
Cameroon			1				1				2
Congo (RD)	1		2				1		1		5
El Salvador							2				2
Erytrea								1		1	2
Guinea	1					1	1	2	2	1	8
Indefinite		4	1			1	3	2		2	13
Iraq	21	22	44	53	41	32	41	69	63	62	448
Ivory Coast									1		1
Palestine	1						1	2	2	2	8
Russia								2			2
Somalia	2	4	1	1	4	5	5	1		2	25
Sudan			1		1			2	2	1	7
Tanzania			2								2
Togo								1		1	2
Yemen		1									1
Total	53	62	75	84	66	58	76	111	104	133	822

IV. Evolution of the caseload at the CGRS

(Caseload in assessing asylum applications at the CGRS)

At the end of August 2011, the CGRA had a total caseload of **13,618** dossiers, of which **4,500** dossiers may be considered a normal workload. The backlog as such amounted therefore to **9,118** dossiers.

Caseload per year



Caseload per month in 2010 and January - October 2011

